

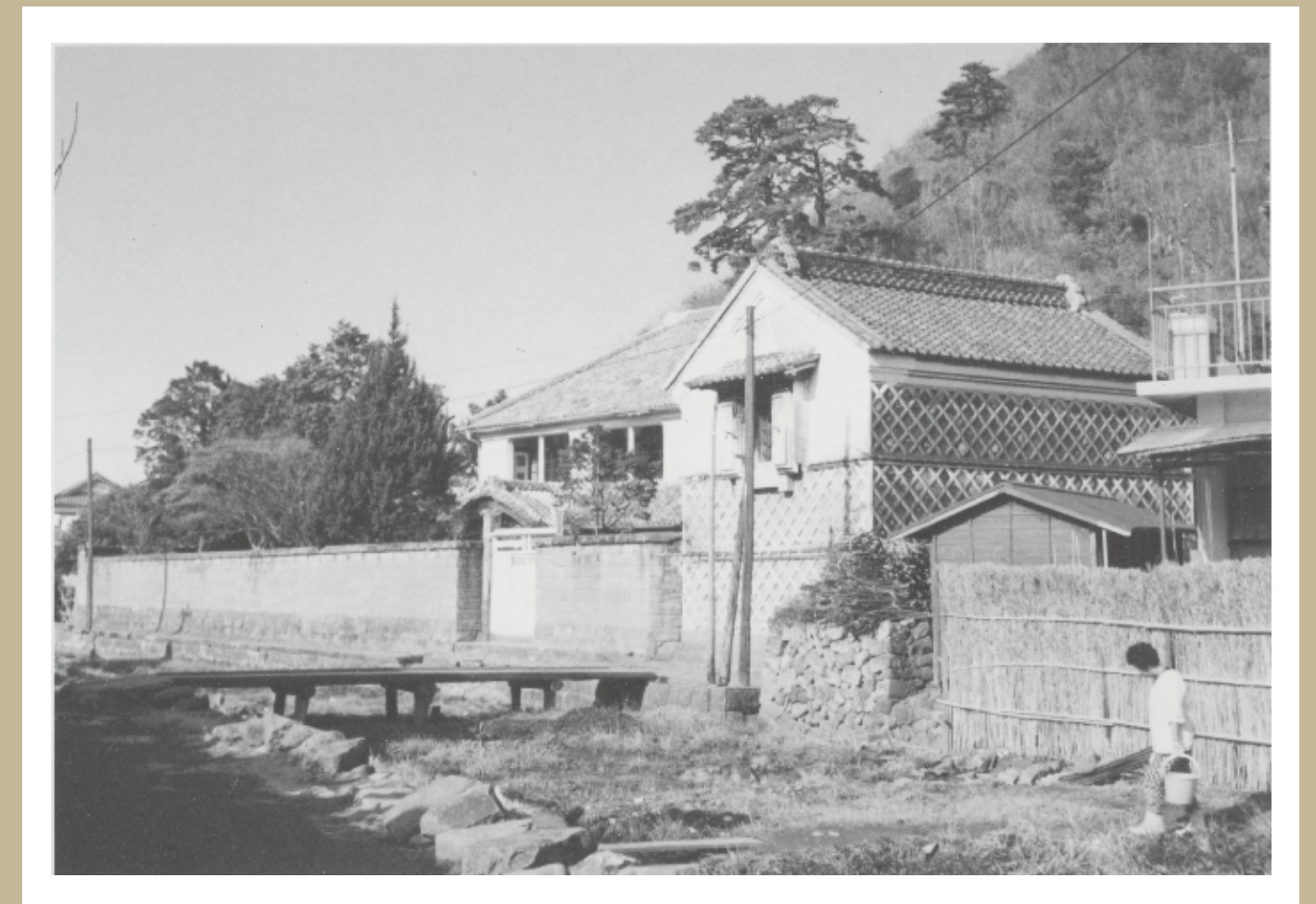
Gateposts and External Fence

Length 81.4m, stone-built

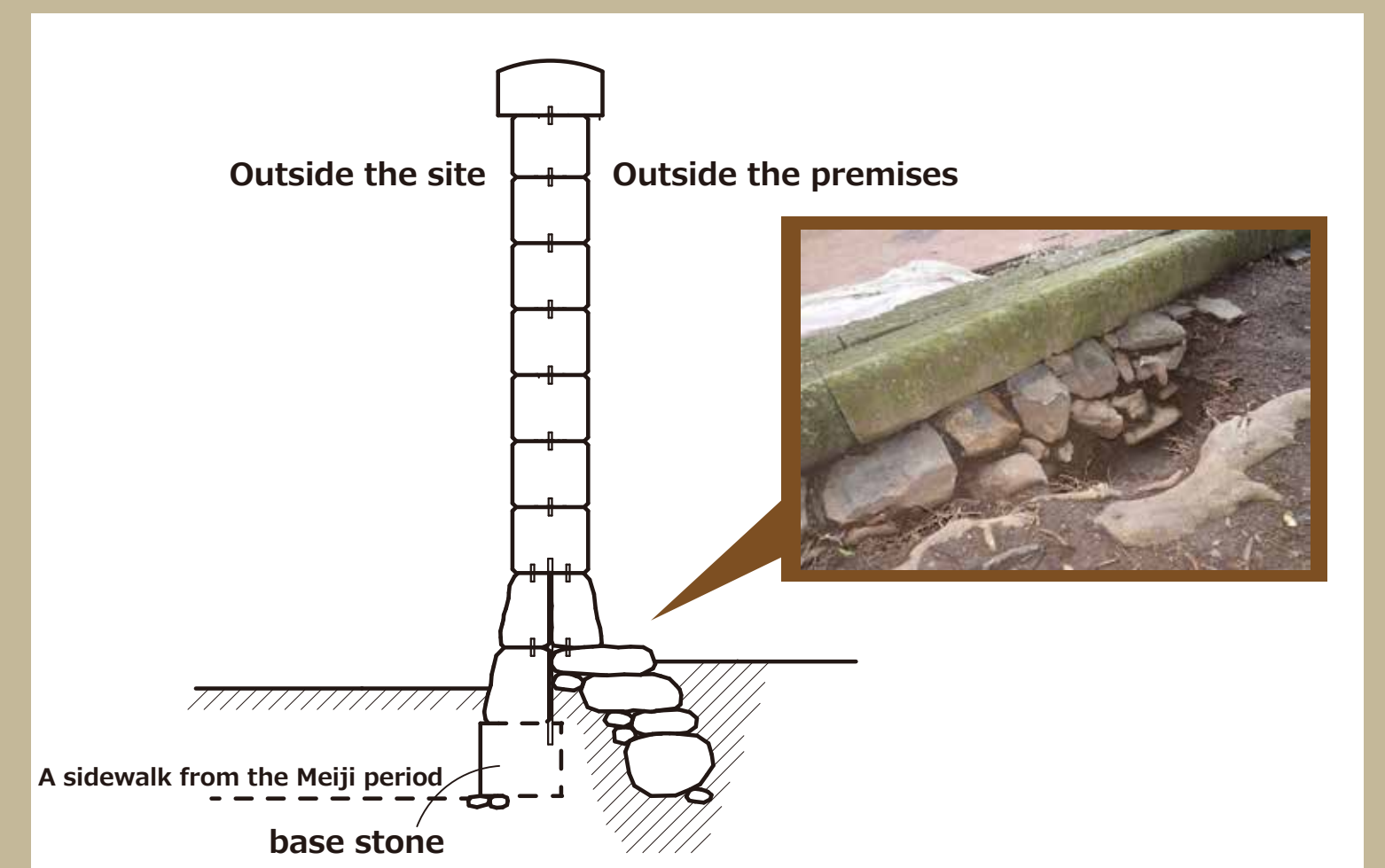
The main gate is made of Izu stone, with 9-Shaku (approximately 2.7 m) high gateposts on either side.

Coursed ashlar masonry was installed for the outer boundary.

Two stones were joined together for the foundation, and at the time of construction, the outside of the property was about one meter lower than it is now, so the underground part below the foundation stone was exposed.



Old Photograph



Depiction