

Numazu Newsletter

No. 276

March 15, 2014

Voluntary Supporters
Kalamazoo Division NICE

INFORMATION

<http://www.city.numazu.shizuoka.jp/>

You can get information about Numazu twice a month on this home page and some hard copies issued by Supportive Volunteers at the Tourist Information Office at the Numazu Station, Palette, the City Library Participation, the City Gymnasium, Speakeasy, the Tap Room, Catholic Church, Kato Gakuen, Chiku Centers and the City Hall

NUMAZU TOPICS

SHIZUURA Integrated Elementary and Junior High School:

its brand new building is ready to welcome students



In advance of the opening of the school, the new building of SHIZUURA Integrated Elementary and Junior High School was showed to the parents and guardians of new students, current students, and neighboring citizens. The visitors looked around classrooms, and the school libraries, which are set on each floor respectively from the 2nd to the 4th. They also went up to the rooftop of the building, where people can take refuge at the time of disasters such as tsunami or others. After looking around all of the school facilities, visitors were really excited about the opening of the school this April.

“Konoko-no-Kawaisa” is to be Heard during the Coming Spring Holidays

Inquiries: School Education Division ☎ 055-934-4809



Spring holidays are coming soon. At five every evening from Mar. 21(National Holiday) to Apr. 6 (Sun), the local lullaby in Numazu “*Konoko-no-Kawaisa*” is going to be broadcasted city wide simultaneously over the community wireless system. When you hear this melody, please tell children playing around in your neighborhood to go home.

■ Numazu Short Movie Festival was Held

Inquiries: Tourism and Exchange Division ☎ 055-934-4747

The city government held a contest of short movies with regional resources including Numazu 100 Selected Treasures as its subject matter to introduce the viewers to our city. Prize winning movies can be watched on the city's official You Tube 「numazu.tv」 . Please take a look.

Homepage address: <http://www.youtube.com/user/numazucity>



You can access the site from this code if you have a cell phone or a smart phone.

Information ~Change of Administrative Structure of Numazu City in Fiscal 2014~

Inquiries: Policy Planning Division ☎ 055-934-4813

The city office will partly reorganize the administrative structure on April 1st so that citizens can use our service easily.

Planning Department

- To Promote Comprehensive PR (public relations) of Numazu
“Treasure Troves of Numazu Promoting Office” will be set up to find and publicize more treasures and make our city attractive and vibrant [7F =Numazu’s treasure promotion division]
- To Prepare for “My number System”
“My Number Preparatory Office” will open to respond to “My Number System” (National Identification Number for social security and tax) that the government is now formulating.

Community Service & Welfare Department

- To Prepare for “Temporary Welfare Benefits”
We set up “Special Welfare Benefits Office” (at Annex) to handle procedures for providing them.
- To Promote Child Care Support
“Planning and Coordination Office” will be set up at Child Support Division to deal with new systems related to child care, such as “Center for Early Childhood Education and Care”, etc.

City Planning Department

- To promote the improvement of Central Numazu
“City Center Development Planning Office” (5F) will be set up. The office has “Revitalization of Central Numazu section” and “Improvement around Koryo Park section.”
- To Keep the Beautiful Landscape of Numazu
“Landscape Office” will be set up to respond to the landscape ordinance.

Environment Department

- To Promote Garbage-disposal Facility
“Garbage-disposal Facility Improvement Promoting Office” will be set up in Garbage Control Promotion Division, and the present “Garbage-disposal Facility Planning Office” will be abolished.

Board of Education

● To Promote Construction of the New Gymnasium.

“New City Gymnasium Preparing Office” will be set up in Sports Promotion Division.

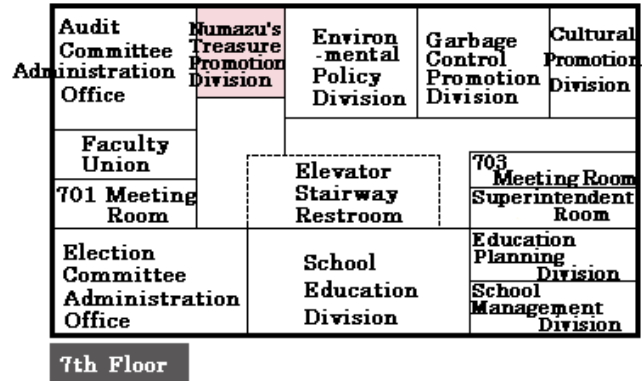
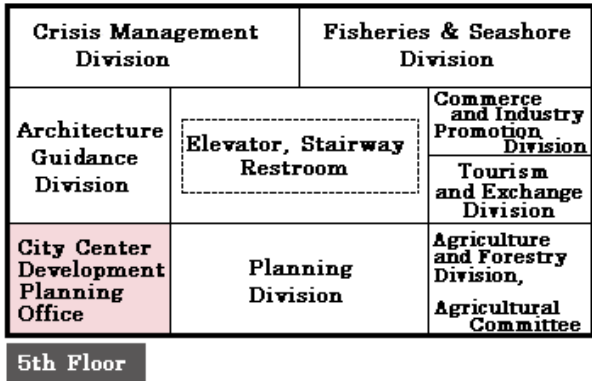
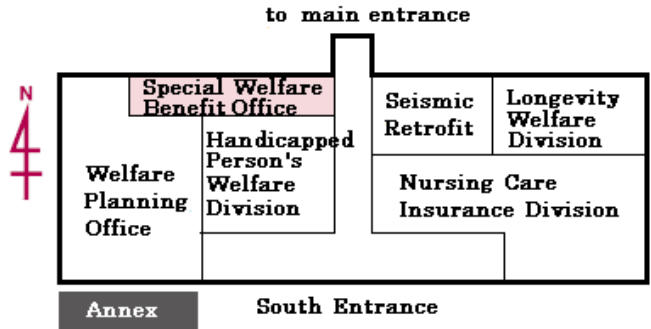
! City Hall Layout Changes

Along with the reorganization, the placement of the division in City Hall is partially changed.

※ indicates division relocation.



The annex building is retrofitted with seismic reinforcement. Please visit the city website for the latest layout.



We Put out Information about Numazu on Facebook and You Tube!

Inquiries: Public Relation Division ☎ 055-934-4703

<p>Facebook</p>	<p>Numazu Topics Information about seasonal events in Numazu. http://www.facebook.com/numazucity</p> <p>Numazu Sukoyaka Pregnancy Support Information about pregnancy, delivery and child-raising. http://www.facebook.com/numazusukoyaka</p> <p>Let's Eat Sushi at the Counter in Numazu Information about Sushi made in Numazu and how to enjoy Sushi bar. http://www.facebook.com/numazu.sushi</p>
------------------------	---

<p>You Tube</p>	<p>numazu.tv You can watch main attractions of the city, events, sea creatures in Ose beach and Yosakoi Tokaido. http://www.youtube.com/user/numazucity</p>
------------------------	---

※ When you leave a comment, you need to register user information on each service.

Municipal Facility Usage Fees Will Change On and After April 1

Consumption tax rate will rise from 5% to 8% on and after April 1 (Tue). In line with the tax rise, fees for municipal facility usage will change. Please contact the facility office or the division concerned about the details of new fees. We ask for your understanding and cooperation.

Facility	Kind of Fees	The Division Concerned
◆ Education and Sports Facilities		
Cultural Center	Fees for Hall Usage	Cultural Promotion Division
WAKAYAMA BOKUSUI Memorial Museum	Fees for Conference Room	☎ 055-934-4812
Center for Youth Employment	Fees for Conference Room	Center for Youth Employment ☎ 055-951-3440
YUMETOBIRA FUNAYAMA (Nature School Camp)	Accommodation Fees	Lifelong Learning Division ☎ 055-934-4871
City Library	Fees for Lecture Room	City Library ☎ 055-952-1234
Heda Library	Fees for Audio Visual Room	
SHONEN SHIZEN NO IE (Youth House in Nature)	Fees for Training Room	SHONEN SHIZEN NO IE ☎ 055-922-1746
City Gymnasium	Fees for Practice Room	Sports Promotion Division ☎ 055-922-7200
Gymnasium for Workers	Fees for Gymnastic Room	
City Baseball Ground	Fees for Baseball Ground	
Koryo Practical Room of Martial Art	Fees for Practical Room	
Heda B & G Community Sports Center	Fees for Gymnastic Room	
Heda Tennis Court	Fees for Tennis Court	
Outdoor Ground Lighting Facility	Fees for outdoor ground lighting	
Ooka Park Tennis Court	Fees for Tennis Court	Park & Tree Planning Division
Ashitaka Athletic Park Tennis Court	Fees for Tennis Court	☎ 055-934-4795
◆ Welfare and Medical Facilities		
City Hospital	Fees for the issuance of medical certificate	Medical Professions Division ☎ 055-924-5100
Heda's Health Center	Fees for Conference Room	Health Promotion Division ☎ 055-951-3480
Night-time Emergency Medical Center	Fees for the issuance of medical certificate	
San Well Numazu	Fees for Conference Room	Social Welfare Division ☎ 055-934-4824
SENBON Plaza	Fees for Conference Room	Longevity Care Division ☎ 055-934-4834

◆Facilities for Events		
Kira Messe Numazu	Fees for Hall Usage	Tourism and Exchange Division ☎ 055-934-4747
Heda Hakama Fall Auto Camping Site	Fees for Camping Site	
Imperial Villa Park	Admission to East Annex, Bus Parking Fee	Park & Tree Planning Division ☎ 055-934-4795
◆Other Facilities		
Kanuki Parking Lot	Parking fees	Property Management Division ☎ 055-934-4714
Clean Center (Garbage Disposal Institution)	Fees for garbage disposal (collected garbage)	Clean Center Management Division ☎ 055-933-0711
Shore Protection Facilities (publicly-administrated)	Permits to collect soil, rocks and stones	Fisheries and Seashore Division ☎ 055-934-4753
Port Facilities (publicly-administrated)	Facility usage, Permits to collect soil, rocks and stones	
Road Occupation	Road Occupation Permits	Road Maintenance Division ☎ 055-934-4788
River Use	River Use Permits	River Maintenance Division ☎ 055-934-4786

Recruitment

A Short Study Program in Kalamazoo

Applications & inquiries: NICE (Civic Collaboration Division) ☎ 055-934-4717

Term: July 22(Tue) ~ 31(Thu)

Cost: about 210,000 yen (fuel surcharge is included)



	High School Student Members	Civic Members
Applicants	High school students living in Numazu city and high school students who are members of NICE	People who live or commute to Numazu city and who are members of NICE
Capacity	2 people ※ A selection will be held on May 7 (Wed).	15 people (In case of a lot of applicants, there will be a drawing.)
How to apply	Fill in the application form available Civic Collaboration Division in Numazu City Hall (2F). Send or submit the application form to Civic Collaboration Division.	Fill in the application form available Civic Collaboration Division in Numazu City Hall (2F). Send or submit the application form and your snapshot to Civic Collaboration Division.
Application time	Apr. 1(Tue) ~ 18(Fri)	Mar. 17(Mon) ~ Apr. 25(Fri)

Events ~Why don't You Visit Mt. Kinkan and Mt. Kanuki?~

1

Hike from Citizen's Forest to Mt. Kinkan & Heda Pass - Enjoy the Cherry Blossoms

We'll aim for the summit of Mt. Kinkan while enjoying Mamezakura cherry blossoms in full bloom and observing nature with a lecturer.

Applications and Inquiries: Park and Tree Planning Division

☎ 055-934-4796

Numazu City Hall, 〒410-8601



When: Apr. 13 (Sun), 10:00 ~ 15:00 / Place to meet: Citizens' Forest (Nishiurakochi), at 10:00

Applicants: 4th grade students and older

(Elementary and middle school students should be accompanied by their parents.)

Lecturer: Mr. Toshiyuki Nakaike

Capacity: 30 people (In case of a lot of applicants, there will be a drawing.)

Things to bring: lunch, drink and protection against the cold

How to apply: Send us *ofuku-hagaki* (a double sided postcard) with name, address, age, grade in school for students and phone number of all applicants.



Deadline: Mar. 27 (Thu)

2

Walk Mt. Kanuki with a guide - Cherry Blossoms will be in Full Bloom

Would you like to enjoy the beautiful spring scenery of Mt. Kanuki on a walk with a Numazu Sightseeing Volunteer Guide?

Inquiries: NPO Numazu Tourist Information Center (Numazu sightseeing volunteer guide)

☎ 055-964-1300 or Tourism and Exchange Division ☎ 055-934-4746



When: Mar. 29 (Sat) 8:30 ~ 12:00 (In case of rain, it will be cancelled.)

Place to meet: *Chuo Koen* Park at 8:30

Course: *Chuo Koen* Park ~ *Koryodai* ~ the top of Mt. Kanuki ~ Shibazumi

Observatory ~ Reizanji Temple ~ *Chuo Koen* Park

* No advance appointment required

Reading and Picture Books' Class during Book Week for Children

Applications and inquiries: City Library ☎ 055-952-1234

When: Apr. 27(Sun) 13:30 ~ 15:00

Where: City Library 4F (#1, 2 Lecture Rooms)

Contents: Reading and picture books' class

Instructors: *Keitaro* san (a former childcare worker, JPIC reading adviser)

Applicants: Anyone (As for picture books' class, only adults)

Capacity: 100 persons (in order of arrival)

How to apply: By phone from 9:30 on Mar. 26(Wed)

※You can leave your child at the nursery. (Reservation is needed.)



'Minna no Uta'(Songs for everyone), NHK 's Popular Program, Concert

Inquiries: Cultural Center ☎ 055-932-6111

Cultural Promotion Division ☎ 055-934-4812

The familiar songs of NHK 'Minna no Uta' will be sung by the singers. Three generations (parents, children, and grandchildren) can enjoy listening to their favorite songs.

When: July 5(Sat), 14:00 ~ (Doors Open: 13:30)

Where: Cultural Center Big Hall

Performers: *Sakata Osamu, Shirai Takako, Oshirikajirimushi, etc.*

Admission fee: Adults: 3,000 yen, High school students and under: 1,000 yen

(Kids older than 3 years of age need tickets.)

Ticket: On sale from Apr. 11(Fri) at the ticket corner of Cultural Center and ticket agencies

Art Exhibition at Citizens' Gallery of Kira Messe Numazu

Inquiries: An executive office of art exhibition to celebrate the opening of Plaza Verde

Matsukawa san ☎ 055-951-2575

Cultural Promotion Division ☎ 055-934-4812

When: ①Mar. 25(Tue) ~ 31(Mon) / ②Apr. 1(Tue) ~ 7(Mon)

Where: Kira Messe Numazu (2F Gallery)

Contents:①Pictures(oil and watercolor paintings, carvings) pottery, Japanese flower arrangement

②Calligraphy, Japanese flower arrangement

Free Events

Izu New Century Choir: Open Practice

Inquiries: Izu New Century Choir, Kondo san ☎ 055-923-7588

Will you come and see the members sing Beethoven's Ninth Symphony?

When: Apr. 25 (Fri), 18:45 ~ 20:45

Where: Cultural Center, Big Meeting Room

No reservation is required.

The 4th Charity Bazaar for the Big Earthquake Survivors

Inquiries: NPO Sanno-kai ☎ 055-962-3190

When: Mar. 30 (Sun), 10:00 ~15:00 (Carried out in rain.)

Where: *Hie Jinja* Shrine in Hira-machi

Contents: Charity Bazaar (Products from Tohoku, Vegetable, Food)

*The benefit is donated to the Big Earthquake survivors.



Garbage Information

Inquiries: Garbage Control Promotion Division ☎ 055-934-4743

Useless electric appliances, such as air conditioners, TV sets, refrigerators, washing machines, should be taken back by makers or shops you bought them from. There's a charge for it.



Events ~Ose Festival & the 26th Uchiura Fishing

Port Festival~~

Inquiries: *Uchiura* Fishery Cooperative Association

☎ 055-943-2316

Ose Bay Commerce Association ☎ 055-942-3052

Numazu Tourism Division ☎ 055-934-4747

When: Apr. 4(Fri)

7:30 ~ 12:00 at *Ose jinja* Shrine

8:30 ~ 14:00 at *Uchiura* Fishing Port

Be sure to see *Isami Odori* (Dance of Bravery) performed by young men in female *kimono*, and the fishing boats decorated with colorful flags. You'll also enjoy fresh seafood at the festival.

[Program]

- 7:30 *Ose* Festival begins. Seafood pot is served at *Osezaki*.
- 7:45 Boats for audience leave Numazu port.
*Prior booking and payment is necessary. **Chidori Kanko Kisen* ☎ 055-943-2221
*adults: 2,300 yen / 4-year-old children ~elementary students: 1,500 yen
- 8:00 Boats for audience leave *Uchiura* fishery port.
*First 150 people can get on board, free of charge.
- 8:30 Fishing boats leave the port.
Uchiura Fishery Port Festival begins.
**Isami Odori* dance performance, Yosakoi performance (at *Osezaki*)
Oku Suruga Bay seafood market and Sunday market begin.
- 9:20 *Uchiura* Fishery Port Festival opening ceremony
- 9:45 Kato Gakuen High School Marching Band performance and parade
balloon art, *Awa Odori* dance
- 10:00 Lottery
- 11:30 Fishing boats arrive at the port. *Isami Odori* dance performance
- 13:00 Kato Gakuen High School Marching Band performance and its parade
balloon art, *Awa Odori* dance
- 14:00 The festival closes.

<Note>

It is said that '*Isami Odori* dance' began in order to please a male god, called '*Hikite Chikara no Mikoto*'; which is dedicated to *Ose Jinja* shrine, and calm the sea. People have dressed as a woman and danced.

Child Raising

Why Don't You Join the Boy Scouts, the Girl Scouts and Junior Sea Friends?

Inquiries: Lifelong Education Division ☎ 055-934-4871

***The Boy Scouts**

Applications and inquiries: the Numazu Chapter of the Boy Scouts of Japan, *Tamura san*

☎ 055-951-2236 FAX: 055-951-2246

We are going to build children with sound mind and body through a variety of activities in the outdoors.

Applicants: Children from 6 to 12 years of age living in Numazu

***The Girl Scouts**

Applications and inquiries: the Numazu chapter of the Girl Scouts of Japan, *Uehara san*

☎ & FAX: 055-921-2533

We are aiming for the girls to grow up with 3 mottos of self-development, the relationship with other people and love and respect for the nature.

Applicants: Girls of six years of age, elementary and junior high school students living in Numazu.

***The Junior Sea Friends**

Applications and inquiries: Numazu Junior Sea Friends, *Nagasawa san*

☎ 055-962-1612 FAX: 055-962-1613

The stage of the activities is the sea. Members are doing activities with the motto of "Learn from the sea and train in the sea".

Applicants: Elementary, junior and senior high school students living in Numazu.



◆How to apply: Please call or send a fax.

Recruitment

New Contract to Moor Pleasure Boats

Applications and inquiries: *Uchiura* Fisheries Cooperative ☎ 055-943-2316

Inquiries: Fisheries and Seashore Division ☎ 055-934-4753

If you want to moor pleasure boats newly at *Uchiura* and *Nishiura* fishing port, please go through the procedure.

Application period: Apr. 1(Tue) ~30(Wed)

※Please ask for further details.

Mon Musee Numazu Volunteer

Applications and inquiries: Mon Musee Numazu ☎ 055-952-8711

Inquiries: Cultural Promotion Division ☎ 055-934-4812

We are looking for volunteers who can show visitors around the museum.

How to apply: By phone

※Please ask for further details.

Information

Swimming Pool will be open

Inquiries: Heda B&G Community Sports Center ☎ 0558-94-3501

Swimming pool in Heda B&G Community Sports Center will be open.

When: Apr. 1(Tue) 9:00~

Sunday Window for City Tax and National Health Insurance Fee

Inquiries: Tax Collection Division ☎ 055-934-4730

National Health Division ☎ 055-934-4727

When: Mar. 23(Sun) 9:00 ~ 15:00

Where: Numazu City Hall Tax Collection Division (2F)

Numazu City Hall National Health Division (1F)

Information from City Hospital

Inquiries: City Hospital (Medical Professions Division) ☎ 055-924-5100

Two divisions for comprehensive medical care and kidney disease are to be closed because of the retirement of doctors.

The Sewage Disposal System is Available in the Communities below from April.

Please make access to it from your house. You will get a letter about the beneficiary payment in June.

Area	Address
Dai-5 & Ooka	Ooka, Sanmaibashi, Fujimi-cho, Sugisaki-cho, Yoneyama-cho
Kanaoka & Kadoike	Ooka, Okaisshiki, Okanomiya, Takaodai, Nishikumando, Higashikumando, Matsuzawa-cho, Takasago-cho, Surugadai
Kaihoku	Futaba-cho
Katahama	Ohzuwa, Matsunaga
Ashitaka & Hara	Ohno, Ohtsuka, Hara, Haramachi-naka-1chome, Momozato, Ueda
Dai-3	Shimokanuki-shiomichi, Hayashi-no-shita, Shimizu, Kinomiya, Inonuma, Shichimen, Fujiibara, Ishihara, Uenohara, Nishimura
Dai-2	Senbon-minato-cho, Hon-aza-senbon-minatoguchi
Uchiura	Uchiura-koumi

Check the city homepage for more information.

Inquiries: Sewage Construction & Maintenance Division ☎ 055-934-4864