

Numazu Newsletter

No. 283

July 1, 2014

Voluntary Supporters
Kalamazoo Division NICE

<http://www.city.numazu.shizuoka.jp/>

You can get information about Numazu twice a month on this home page and some hard copies issued by Supportive Volunteers at the Tourist Information Office at the Numazu Station, Palette, the City Library Participation, the City Gymnasium, Speakeasy, the Tap Room, Catholic Church, Kato Gakuen, Chiku Centers and the City Hall.

Love Numazu!

Sending Numazu Topics July 26 & 27 Numazu Summer Festival
via Kano gawa River Fireworks Display
YouTube & Facebook Please check the site!

***Koho Numazu Japanese version has Citizens' free tickets. Ask for the details.**

Enjoy Summer Events in Numazu!

Experiences

Cultural Property Workshop for Children

Application and Inquiries: Cultural Property Center ☎ 055-952-0844

When: Aug. 5 (Tue), 9:00 ~ 15:30

Where: Cultural Property Center (at *Ozuwa*)

Contents: making a fire, steam cooking by stones, visiting cultural property center

(*If it rains, they will visit the Meiji Historical Museum, etc.)

Applicants: 5th grade elementary school student ~ junior high school students

Capacity: the first 25 people

Admission: 300 yen (for insurance)

Things to bring: lunch, drinks, etc.

How to apply: by phone after July 8 (Tue), 9:00



Experience of Tea Leaves Picking Class for Parent and Child

Applications and Inquiries: JA Nansun Ashitaka Branch ☎ 055-966-2491

Inquiries: Agriculture and Forestry Division ☎ 055-934-4751

When: Aug. 2 (Sat) 9:00 ~ 13:00 / Where: Ashitaka Chiku Center

Contents: Tea leave picking, making tea soba noodles, cooking with tea powder and leaves

Applicants: elementary school students and their parent

Capacity: 30 pairs (In order of arrival)

How to Apply: By phone after July 8(Tue), 9:00

Beetle and Stag Beetle Class

Applications and inquiries: Shonen Shizen no Ie (Youth House in Nature) ☎ 055-922-1746

When: Aug. 2 (Sat) 15:00 ~ Aug. 3 (Sun), 10:00, one night two days

Where: Shonen Shizen no Ie (Youth House in Nature)

Capacity: Collecting beetles and stag beetles and learning how to rear them

Applicants: elementary school students and their guardians

Capacity: 20 pairs (in order of arrival)

Participation Fee: 1,500 yen per person (for accommodation, etc.)

Things to bring: writing implements, insect cage, water bottle, extra clothes, insect net, flashlight

How to apply: By phone after July 8 (Tue), 9:30



Welfare Experience Class for Elementary School Students

Applications and Inquiries: Numazu City Social Welfare Council ☎ 055-922-1500

Inquiries: Social Welfare Division ☎ 055-934-4824

When: Aug. 7 (Thu), 9:00 ~ 12:00 / Where: San Well Numazu (2F Conference room)

Contents: Learning about welfare for people with visual and hearing impairment

Applicants: 3rd ~ 6th grade elementary school students in Numazu City

Capacity: 25 students (in order of arrival)

How to apply: By phone after July 8 (Tue), 9:00



Cooking Class of Fish for Elementary School Students

Applications and inquiries: Health Promotion Division ☎ 055-951-3480

When: Aug. 1 (Fri), Aug. 4 (Mon) 10:00 ~ 13:00 / Where: Health Center (Cooking room)

Contents: Cooking local fish and vegetables

Applicants: 1st ~ 3rd graders of elementary school and their guardians living in Numazu City

Capacity: 12 pairs each class (in order of arrival)

Fee: 320 yen per person (for food material and insurance)

Things to bring: An apron, a triangular piece of cloth for covering hair, writing implements, towels,
two dish clothes

How to apply: By phone after July 11 (Fri), 8:30

Baumkuchen Class

Applications and Inquiries: Park & Tree Planning Division ☎ 055-934-4796

When: July 20 (Sun), 10:00 ~ 15:00 / Where: Citizens' Forest Park (at Nishiura Kochi)

Applicants: 4th grade elementary school students and older (Elementary and junior
high school students must be accompanied by their guardians.)

Capacity: 30 people (In case of a lot of applicants, there will be a drawing.)

Fee: 500 yen per person / Things to bring: Lunch, drinks, working gloves, etc.

How to apply: Send an *ofuku hagaki* (a reply-paid postcard) with all applicants' names,
addresses, ages, grades, phone numbers and "Baumkuchen Class" to
the address below.

<〒410-8601 Numazu City Hall, Park & Tree Planning Division >

Deadline: July 11 (Fri) *The applications have to reach us by the due date.



Aquatic Life Observation Study for Parent and Child

Applications and inquiries: Environmental Policy Division ☎ 055-934-4740

When: July 29 (Tue), 13:30 ~ 15:30 (In case of rain, it will be postponed to Aug. 5 (Tue).)

Study site: Around the downstream of Kisegawa Bridge

Applicants: Elementary and junior high students and their guardians

Capacity: 35 people (In case of a lot of applicants, there will be a drawing.)

Things to bring: Towel, cap or hat, footwear which can get wet, writing implements

How to apply: By phone before July 14 (Mon)

Summer Food Education Camp for Parents and Children

Applications and inquiries: Agriculture and Forestry Division

☎ 055-934-4751 / FAX: 055-933-1412

Participants are going to visit production sites of agricultural and livestock products in Numazu and make curry with vegetables they harvest.

When: Aug. 4 (Mon), 8:30 ~ Aug. 5 (Tue), 12:30, one night two days

Where to stay: Shonen Shizen No Ie (Youth House in Nature)

Where and When to meet: In front of Water Utility Department Building at 8:20

Applicants: 5th and 6th elementary school students living in Numazu

Capacity: 40 people (In case of a lot of applicants, there will be a drawing.)

Fee: 1,000 yen (for accommodation, etc.)

How to apply: By phone or FAX by July 17(Thu)

*Please tell us or write all the applicants' names, addresses, ages, grades, phone number.

*Please ask us about the details or check them on the city website.



Omatsuri Hiroba (Festival) in San Well Numazu

Applications and inquiries: San Well Numazu Fureai Koryushitsu ☎ 055-922-1501

Inquiries: Social Welfare Division ☎ 055-934-4824

When: Aug. 3 (Sun) 13:30 ~ 15:30 / Where: San Well Numazu (5F Fureai Koryushitsu)

Contents: Picking up a yo-yo or sweets, games, making a vegetable gun, etc.

Applicants: children aged 3 and older

Capacity: 120 people (in order of arrival)

Things to bring: Drinks, towels

How to apply: Phone us or come to us directly after July 18(Fri), 9:30

Events

Numazu Beach Fes 2014

Applications and Inquiries: Lot.n ☎ 055-919-1060

Applications: Fisheries & Seashore Division ☎ 055-934-4753

This event introduces to visitors marine sports they can enjoy in Numazu.

When: July 20 (Sun), 9:00 ~ 15:30 / Where: Ushibuse Beach

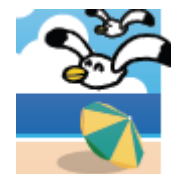
Contents: Marine sports (sea kayaking, wind surfing, etc.), beach volleyball competition,

Hula dance performance, etc.

*If you want to join the beach volleyball competition, you have to apply in advance.

*Please check the details (such as fees) on the website shown below.

<http://ja-jp.facebook.com/numazu.beach.fes>



Dan★Ran Festa for Parent and Children

Applications and Inquiries: Health Promotion Division (in Health Center) ☎ 055-951-3480

When: Aug. 2 (Sat), ① 9:30 ~ 10:15, ② 10:45 ~ 11:30, ③ 9:20 ~ 12:00

Where: San Well Numazu (4F *Tamokuteki* Multipurpose Hall)

Contents: ①&②=learn how to make children like exercises

③=games for parent and child, hand massaging

Applicants: ①older or middle aged kindergarten children and their family

②1st or 2nd grade elementary school students and their family

③anyone

Capacity: ①&②20 pairs each (in order of arrival) / ③anyone

How to apply: ①&②by phone after July 9 (Wed), 9:00 / ③ No reservation is needed.

City Library

Summer Expedition in the Library for Elementary School Students

Applications and Inquiries: City Library ☎ 055-952-1234, 9-1 Sanmaibashi-cho, 〒410-8533

When: July 29 (Tue), 30 (Wed), 31 (Thu), Aug. 5 (Tue), 12 (Tue), 13 (Wed), 19 (Tue), 20 (Wed),
9:00 ~ 12:00 each day

Contents: to experience the librarians' work and learn how to lend and search for books

Applicants: 4th ~ 6th graders in Numazu / Capacity: 6 students each day

(In case of a lot of applicants, there will be a drawing.)

Things to bring: writing materials, a library card, your own drink

How to apply: send us an *ofuku hagaki* with the title "Summer Expedition in the Library," your name, address, zip code, parent's name, phone number, school name, grade, the desired days (first to third choices) *You can't apply as a group.

Deadline: July 11 (Fri)

*You can't apply by phone or bring the application directly to us.



Summer Video Showings in City Library

Inquiries: City Library ☎ 055-952-1234 / Heda Library ☎ 0558-94-4420

*City Library (4F Audio-Visual Auditorium)

When	Time	Title
July 27 (Sun)	14:00 ~	"Tsukinowa Guma, Omae Umasoudana #2" (Black bear, You look so tasty!)
Aug. 2 (Sat)		Ocean -- Nature #2 (Expedition of Deep Ocean)
Aug. 15 (Fri)		A tale of huge whale which fell in love with a small submarine

Capacity: 200 people each (in order of arrival)

*Heda Library (2F Audio-Visual Room)

When	Time	Title
Aug. 13 (Wed)	①10:00 ~	①"Omae Umasoudana #1& #2 (You look so tasty!)"
	②14:00 ~	②Ocean -- Nature #1 (Tales of Living things)

Capacity: 100 people each (in order of arrival)

A Lecture on Deep Sea Creatures for Children

Application and Inquiries: City Library ☎ 055-952-1234

When: Aug. 1 (Fri), 14:00 ~ 15:30 / Where: 4F Shichokaku Hall (Audio-visual Hall)

Theme: Deep sea creatures – grotesque but lovely creatures –

Try a quiz on deep sea creatures!



Lecturer: Mr. Koji Ishigaki, (a director of Numazu deep sea aquarium)

Applicants: elementary school students (*They can be accompanied by their guardians.)

Capacity: the first 200 people

How to apply: by phone after July 16 (Wed), 9:30

Craft Workshop

Consumer Classes for Parent and Child

Applications and Inquiries: Citizens Consultation Center ☎ 055-934-4841

When: Aug. 7 (Thu), ① 10:00 ~ 12:00 ② 13:30 ~ 15:30

Where: Health Center (Kitchen)

Contents: ① making a recycled-paper postcard from milk cartons

② making a battery from vegetables and fruits

Applicants: 3rd ~ 6th grade elementary school students and their guardians

Capacity: 15 pairs (in order of arrival)

Things to bring: Stationery, cloths, apron, etc.



How to apply: By phone or electronic application on the city website after July 8 (Tue), 9:00

Let's Make a Plaster Statue with Clay

Applications and Inquiries: Mon Musee Numazu ☎ 055-952-8711

Applications: Cultural Promotion Division ☎ 055-934-4812

When: Aug. 9 (Sat), 13:00 ~ 16:00

Where: Dai-ichi Chiku Center (Conference Room)

Lecturer: Mr. Tomita (a sculptor)

Applicants: Elementary school students and their guardians

Capacity: the first 20 people

Things to bring: towels, plastic gloves, slippers, plastic bags, plastic wrapping cloths

How to apply: by phone after July 10 (Thu), 10:00



Bus Tours

Bus Tour for Parent and Child to the Area around Numazu Station

Applications and Inquiries: Promotion Division ☎ 055-934-4768

When: Aug. 6 (Wed), 9:00 ~ 12:00 / Meeting time and place: 8:50 at the entrance of City Hall

Sites to visit: Plaza Verde, JR Freight Station of Numazu, etc.

Applicants: Elementary school students and their guardians living in Numazu City

Capacity: 10 pairs (in order of arrival)

Things to bring: drinks, cap or hat, writing materials

How to apply: By phone after July 10 (Thu), 8:30

Bus Tour for Parent and Child to Civic Facilities

Applications and Inquiries: Citizens Consultation Center ☎ 055-934-4702

When: Aug. 7 (Thu), 9:00 ~ 15:30 / Meeting time and place: 8:50 at the entrance of City Hall

Sites to visit: Clean Center, Kano River purification facilities, South Fire Station, Conference room of City Council

Applicants: Elementary and junior high students and their guardians living in Numazu

Capacity: 23 people (in order of arrival)

Things to bring: lunch, drinks, writing materials, etc.

How to apply: By phone after July 10 (Thu), 8:30

Information from the City Facilities

Summer Operating Schedule of Ganyudo Ferryboat

Inquiries: NPO Numazu Tourism Association ☎ 055-964-1300

Tourism Exchange Division ☎ 055-934-4746

Operating Date: July 19 (Sat), 20 (Sun), 21 (Holiday), 26 (Sat), 27 (Sun)

Starting place	Time	Fare for one way
Ganyudo	9:00, 10:30, 13:30, 15:00	100 yen for a Junior high school student or older
Ayumi-bashi Bridge	9:25, 10:55, 13:55, 15:25	50 yen for an elementary school student

※The route between Ganyudo and Numazu Port is operated any time when called for.
(9:00~17:00)

Citizens' Forest Camping Sight

Applications and inquiries: Citizens' Forest ☎ 055-942-3103

Inquiries: Park and Tree Planting Division ☎ 055-934-4796

***Summer Camp**

When: July 20(Sun) ~ Aug. 30(Sat)

Facilities: Standing tent for 5~6 persons: 15 / Tent site for your tent: 24

Lodging for 3~4 persons: 1 / Barbecue grill for 10 persons: 8



***Bamboo and wooden craft class**

Applicants: Group of 5~10 people

The date is decided according to an instructor's schedule.

We prepare materials and tools.

How to apply: By phone a week before you'd like to participate



July is Shore and Beach Preservation Month.

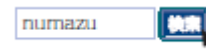
It is very important for each individual to have good manners and keep the beaches clean.

Inquiries: Fisheries & Seashore Division ☎ 055-934-4753

Seven Beaches are Opening on July 19 (Sat)

Inquiries: Tourism and Exchange Division ☎ 055-934-4746

Where	When	
Senbonhama, Togo, Mito, Ose & Ita Beach	until Aug. 24(Sun)	Lifeguards are on duty between 8:30 and 17:00 on Senbonhama, Togo, Ida, Hirasawa, Mihama beaches (between 9:30 and 16:00 on Ose beach). Please check the city website for more information.
Hirasawa (La La La-Sun-Beach) & Mihama Beach	until Aug. 31(Sun)	



“Plaza Verde” Grand Opening on July 20 (Sun)

Inquiries: Tourism and Exchange Division ☎ 055-934-4843

Plaza Verde, which is a Convention Center with an exhibition facility, conference facility and accommodations, will make its grand opening at the north exit of Numazu station.

■ Outline of Facilities

It was designed based on the concept of Senbonmatsubara in consideration of environment, such as using logs produced in Shizuoka prefecture for the entrance, greening the roof and the walls.



- ① from left, Exhibition Facility, Conference Center and Accommodations
- ② Information Corner made with wood produced in Shizuoka prefecture
- ③ Convention Hall A that holds about 1,100 people
- ④ Roof Garden of Conference Center open to the public

■ Commemorative Events for Grand Open of the Venue

Event	When	Where	Contents
Commemorative Ceremony International Forum	July 20 (Sun) 13:00 ~ 16:00	Convention Hall A	※ invitation only
Fujinokuni Exhibition of food, flower and containers, concurrently Ceramic Fair	July 20 (Sun) 10:00 ~ 19:00 July 21(Holiday) 10:00 ~ 16:00	Multipurpose Hall	Exhibition and Sales themed on food, tea and flower
Photo Exhibition of Mt. Fuji and Senbonmatsubara	July 20 (Sun) 10:00 ~ 16:00 July 21(Holiday) 10:00 ~ 16:00	Kira Messe Numazu 1F Entrance Gallery	Photo exhibition themed on Mt. Fuji and Senbonmatsubara

Plaza Verde Summer Live Concert	July 21(Holiday) 10:00 ~ 16:00	Convention Hall A	Concert of Symphonic band, Koto music, Drum, etc. performed by local high school students
SPAC (Shizuoka Performing Arts Center) Performance on the screen	July 21(Holiday) 10:00 ~ 12:00	Convention Hall B	Showing a film of “Mahabharata~ King Nara’s Adventure”
Commemorative Lecture “Fuji and Zen Master Hakuin”	July 21(Holiday) 14:30 ~ 16:00	Convention Hall B	Lecture by Mr. Katsuhiro Yoshizawa, Professor of Hanazono University
Summer Youth College	July 21(Holiday) 10:00 ~ 16:00	4F Conference room, small meeting room	Exhibition and presentations by local high school students
Works Exhibition by Architect Itsuko Hasegawa	July 9 (Wed) ~ July 21(Holiday) 10:00 ~ 16:00	Citizens’ Gallery	Exhibition of works by Itsuko Hasegawa who designed Plaza Verde

※ Application is required for the commemorative lecture “Fuji and Zen Master Hakuin” (capacity: about 300 people). Please apply to SBS Promotion (☎ 054-260-6911).

■ International Flower Design Competition “ASIA CUP 2014” Held in Japan



Asia cup is the international flower design competition held every 3 years. World-class florists create design articles. Please enjoy the beautiful flower artworks.

When: July 26 (Sat), 27 (Sun), 10:00 ~ 17:00

Where: Convention Hall A, Multipurpose Hall, etc.

※“Fujinokuni Hananomiyako Shizuoka Fair” will be held concurrently in Multipurpose Hall.

※ For more information

About the facilities ~~~ Plaza Verde ☎ 055-920-4100 <http://www.plazaverde.jp/>

About the commemorative events ~~~ Fujinokuni Senbonmatsu Forum Management Division

☎ 054-221-3528

<http://www.pref.shizuoka.jp/bunka/bk-350/plazaverde.html>

Child Raising

Briefing session on Schools

*Briefing on Junior High School Division of Municipal Numazu High School

Inquiries: School Education Division ☎ 055-934-4809

When: Aug. 1 (Fri) 13:30 ~ 16:00 & Aug. 2 (Sat) 9:30 ~ 12:00

Where: Junior High School Division of Municipal Numazu High School,

Contents: the education system that integrates junior and senior high school curriculum, school life, visiting facilities on the campus.

Applicants: 6th graders and their parents

How to apply: contact the school the students go to

*Please contact us if students are in other graders that want to attend.



*Becoming a Municipal Numazu High School student for a Day

Inquiries: Municipal Numazu High School ☎ 055-921-0805

When: Aug. 5 (Tue) and 6 (Wed) 8:30 ~ 12:10

Where: Municipal Numazu High School

Applicants: 3rd grader of junior high school and their parents

How to apply: apply at the school you go to

Event

Tahara Toshihiko Concert



Inquiries: Numazu Cultural Center ☎ 055-932-6111

Inquiries: Culture Promotion Division ☎ 055-934-4812

When: Oct. 11(Sat) 18:00 ~

Where: Cultural Center (Big Hall)

Fee: 6,500yen (all seats are reserved, 4 years old and older are charged)

Tickets: on sale from July 12(Sat) at the ticket corner of the Cultural Center and ticket agencies

Lecture & Class

Lecture on Chinese Culture 2014 by NICE

Inquiries and applications: NICE office (in Civic Collaboration Division) ☎ 055-934-4717

When: July 24(Thu) 19:00 ~ 20:30

Where: San-Well Numazu(2F Big Meeting Room)

Theme: to know present China by new words of Japanese origin and buzzwords

Lecturer: Gosen-san

(the professor, International Relations division, graduate school of Nihon University)

Capacity: 60 people (in order of arrival)

How to apply: by phone after July 8(Tue) 8:30

Recruitments

High School Students participating in “Shaberi-ba” in Numazu 2014

Applications and inquiries: Life Long Learning Division ☎ 055-934-4871



Would you like to participate in the panel discussion to talk about the attractive city having the theme “High school student of Numazu soul- a prosperous city by young power” with students nominated by each high school in Numazu?

When: Aug. 24(Sun) 10:00 ~ 15:00

Contents: in the morning: looking at houses along streets

in the afternoon: discussion at the Cultural Center

Applicants: high school students who live in Numazu and go to high schools in other cities
(except Numazu Shogyo High School)

Capacity: 2 students (In case of a lot of applicants, there will be a drawing.)

How to apply: by phone by July 18(Fri)

Pool Lifeguards for Heda B&G Community Sports Center

Inquiries and applications: Sports Promotion Division ☎ 055-922-7200

Working period: July 25(Fri) ~ Aug. 31(Sun)

Working hours: 8:30 ~ 17:15

Applicants: people who are 18 years old and older (except high school students)

Wages: 6,800 yen per day

How to apply: by phone by July 15(Tue)

The 41st Numazu City Arts Festival Calling for Participants

Inquiries and applications: Numazu Culture Association (13:00 to 16:00 on weekdays)

☎ 055-952-6597

Inquiries: Culture Promotion Division ☎ 055-934-4812

How to apply: by phone

***Arts Exhibition**

When: Sep. 30(Tue) ~ Oct. 26(Sun) 10:00 ~ 18:00, (10:00 ~ 16:00 on Sundays)

Where: Cultural Center (Exhibition Room)

Applicants: people who are 16 years old and older

Items: watercolors, prints, Japanese paintings, oil paintings, photos

*Please contact us about the deadlines for application which vary according to the items.

***Chorus**

When: Oct. 5 (Sun) 12:00 ~ / Where: Cultural Center (Big Hall)

Applicants: boys and girls chorus, high school students, adults

Deadline: Aug. 4(Mon)

***Calligraphy**

When: Oct. 8(Wed) ~ 13(Holiday) / Where: Plaza Verde (Citizens' Gallery)

Applicants: people who are 16 years old and older

Deadline: Sep. 9(Tue)



***Variety entertainment**

When: Oct. 19(Sun) 13:00 ~ / Where: City Library (4F Audio Visual Hall)
Contents: storytelling, rakugo, magic / Deadline: July 25(Fri)

***Traditional Japanese music**

When: Oct. 26(Sun) 13:00 ~ / Where: Cultural Center (Small Hall)
Applicants: Traditional Japanese music group of three or more (high school students and older)
Deadline: July 19(Sat)

***Modern flower arrangement exhibition**

When: Nov. 1(Sat) ~ 3(Holiday) 10:00 ~ 17:00
Where: Cultural Center (Exhibition room)
Deadline: Aug. 31(Sun)

Contestants on the 28th Festival of Children's Songs in Numazu

Applications & Inquiries: Cultural Center ☎ 055-932-6111

Inquiries: Cultural Promotion Division ☎ 055-934-4812

Numazu City is now accepting applications for the 28th Festival of Children's Songs. Applicants should be groups of 5 people or more.

When: Nov. 16 (Sun) 14:00 ~

Where: Cultural Center (Big Hall)

How to apply: By phone by Aug. 1 (Fri)

※Please make inquiries about details on the judging system and others.



Information

Did You Know About “the Exemption System” for National Pension Premium?

Applications & Inquiries: Resident Registration Division ☎ 055-934-4724

Those who have difficulty in paying pension premium because their income of the previous year was less than a certain amount of money can utilize “the exemption system.” It is strongly recommended for the above-mentioned people to apply for the exemption, because the pension premium should not be left unpaid. When their applications are approved and accepted, the whole or a part of the pension premium should be exempted. Also those who are under 30 years old can utilize “the Moratorium System on Premium Payment for Youth.” When their applications are approved and accepted, the period of premium payment should be postponed.

※2 years and 1 month before the time of the application should be the period covered by the moratorium system. ※Please make inquiries about the details.

Declaration of Depreciation Assets; those who have Real-Estate, Business, or Agricultural Income are required to make a declaration

Applications & Inquiries: Property Tax Division ☎ 055-934-4739

The property that was accounted for as depreciation cost in the final declaration is supposed to be the object of taxation for fixed asset tax. Those who have not yet made a declaration of depreciation assets for the fiscal year 2014 should ask the division above for more information.

Evening Window for City Tax

Inquiries: Tax Collection Division ☎ 055-934-4730

When: July 24 (Thu), 17:15 ~ 20:00 / Where: Tax Collection Division (City Hall 2F)

Evening Window for National Health Insurance Premium

Inquiries: National Health Insurance Division ☎ 055-934-4727

When: July 24 (Thu), 18:15 ~ 20:00

Where: National Health Insurance Division (City Hall 1F)

Evening and Weekend Consultation for Water Bill Payment

Inquiries: Water and Sewage Service Division ☎ 055-934-4853

Evening Window: July 23 (Wed), 17:15 ~20:00

Weekend Window: Aug. 9 (Sat), 9:00 ~ 12:00

Where: Water and Sewage Service Division (Water Service Department Building 1F)

City Gymnasium is closed on July 28

Inquiries: City Gymnasium ☎ 055-922-7200

In order to clean the whole facility, City Gymnasium is to be closed for a day. (Office counter work like the reception of reservation and others will be available from 8:30 to 17:15.)

When: July 28 (Mon)

Information from Indoor Swimming Pool

Inquiries: Indoor Swimming Pool ☎ 055-932-2179

◆Utilization Time for Summer is going to be Changed

Period: July 20 (Sun) ~ Aug. 31 (Sun)

Utilization time: Morning = 9:00 ~ 12:00 (7:00 ~ 12:00 on Saturdays, Sundays and National Holidays) / Afternoon = 13:00 ~16:00 / Evening = 17:00 ~ 21:00

※The swimming pool will be closed on Mondays.

◆Closed Period

In order to clean the facilities and change the water of the swimming pools, Indoor Swimming Pool is to be closed during the following period.

Period: July 14 (Mon) ~ 18 (Fri)

Information from Heda B & G Marine Center; there will be a closed period

Inquiries: Heda B & G Marine Center ☎ 0558-94-3501

In order to clean the facilities and change the water of the swimming pools, Heda B & G Marine Center is to be closed during the following period.

Period: July 14 (Mon) ~ 19 (Sat)

If You Find Loggerhead Turtles' Footprint, Let us know!

Inquiries: Fisheries & Seashore Division ☎ 055-934-4753 (weekdays)

City Hall (doorkeeper's) ☎ 055-934-1414 (weekends, holidays and at night)

Every year, we confirm that loggerhead turtles come on shore and lay eggs. We have been saving them together with the other organizations. If you find their footprints, please inform us.

*If you capture turtles or gather their eggs, you will be punished.

Be Careful! Heatstroke!

Inquiries: Health Promotion Division ☎ 055-951-3480

Heatstroke can easily get you not only outdoors but indoors. Let's take preventative measures against it.

*Be careful on days with high temperatures and high humidity, no wind, strong sunlight.

*Be careful if you are overweight, in lack of sleep, and in poor condition.

- *Precaution: 1. Use an electric fan or an air conditioner and wear cool and airy clothing.
2. Get adequate fluid and supplement salt.
3. Keep regular hours, sleep enough and eat regularly.



Traffic Safety Campaign in Summer: July 11(Fri) ~ 20(Sun)

Inquiries: Community Association and Promotion Division, Traffic control and Crime prevention Office ☎ 055-934-4742



In order to reduce traffic accidents, we focus on the following four points.

- *To prevent traffic accident for children and seniors
- *To prevent collision
- *No drunken driving
- *To prevent traffic accident for pedestrians

Notification or Permission is required for Excavation and Filling of Earth

Inquiries: Planning Division ☎ 055-934-4761

To prevent damage from a landslide, you need to notify when you excavate or landfill an area of 1000m² and over or use the earth and sand 2,000m³ and over. In urbanization control area, when the area of excavating or landfilling is 500 m² and over, the height of bank of earth is 1m and over, and the amount of earth and sand is 500m³ and more, you need permission.

Please Cooperate in Saving Electricity in Summer

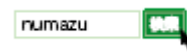
Inquiries: Environmental Policy Division, Environmental Planning office ☎ 055-934-4741

Saving electricity is required more because of global warming and the decline of electric power supply after 3.11. so city facilities will carry out saving electricity during the following period.

Please cooperate in saving electricity.

Period: July 1(Tue) ~ Sep. 30(Tue)

*Please see the website about the details of saving electricity.



Let's Clean Our City in the Morning ~for the 67th Numazu Summer Festival

Inquiries: Akarui Shakai-zukuri Undo (Movement for a Bustling City), Numazu Area Office, Ueno san ☎ 090-2572-9166

Inquiries: Tourism and Exchange Division, Planning officials ☎ 055-934-4747

Why don't you participate in the cleaning for people to enjoy Numazu summer festival?

When: July 27(Sun), 5:00 ~ 6:00

Where to meet and time: Chuo Park at 4:45

What to bring: Gloves for working, cleaning equipment

* Please come to the meeting place on the day.

Regulation of Traffic at Mt. Fuji in Summer

Inquiries: Shizuoka Prefecture Road Planning Division ☎ 054-221-3359

Construction Planning Office ☎ 055-934-4776

You can't drive your car during the periods below. You can park your car at the pay parking lot (1,000 yen for a car) and take shuttle buses or taxis.

Line	Period
Mt. Fuji Sky Line	July 10 (Thu) 17:00 ~ Sep. 10 (Wed) 17:00
Fuji Azami Line	July 11 (Fri) 12:00 ~ 13 (Sun) 12:00 July 18 (Fri) 12:00 ~ 21 (holiday) 12:00 July 25 (Fri) 12:00 ~ 27 (Sun) 12:00 Aug. 1 (Fri) 12:00 ~ 24 (Sun) 12:00 Aug. 29 (Fri) 12:00 ~ 31 (Sun) 12:00 Sep. 5 (Fri) 12:00 ~ 7 (Sun) 12:00

Parent-Child Study Tour

Application and inquiries: Numazu General Constructors Association ☎ 055-932-8311

When: Aug. 5(Tue) (The tour will be held even if it is drizzling.)

Where to meet: Numazu General Constructors Association (Miyuki-cho)

Where: Yamanashi Prefectural Maglev Exhibition Center & Fuefukigawa Fruit Park

Participants: Elementary school students and their parents living in Numazu, Susono, Gotemba, Shimizu Town, Nagaizumi Town, Oyama Town

Capacity: 80 pairs (160 persons) (in order of arrival)

What to bring: rain gear and drink

How to apply: by phone after July 14(Mon) 8:30

Information

Soccer Match in Numazu:

Azul Claro NUMAZU vs Fagiano Okayama Next

When: July 21 (holiday) Kick-off at 13:00 (Gates Open: 11:00)

Where: Ashitaka Park Athletic Field



Azul Claro NUMAZU belongs to Japan Football League (JFL), which aims for J1 league.

This is the opening game of the 2nd stage. We named it "Numazu-shi Match" to support the team and distribute free guest tickets.

* There will be some events such as half-time show.

* You need an admission fee if you don't have the free ticket.

* Please park your car at the Ashitaka park athletic field parking if you come by car.

Please see the homepage for details. <http://www.azul-claro.jp/>

Inquiries: Azul Claro Suruga ☎ 055-929-8811

Sports Promotion Division ☎ 055-922-7200

* Numazu-shi Match Free Guest Ticket (Please refer to 'Koho Numazu'(Japanese version).)

Recruitment

“San-San Lifelong Study” Festival

Inquiries: Lifelong Education Division ☎ 055-934-4870

San-San Lifelong Study Festival is a show and exhibition of the learners.

Exhibition

When: Nov. 22(Sat) & 23(holiday)

Contents: Art works (paintings, prints, pressed flower paintings, etc.) / Unpublished

One piece per one category / Up to two pieces as a total

Presentation

When: Nov. 22(Sat) & 23(holiday)

Contents: Research and study of history, environment, etc.



Handmade crafts and toys

When: Nov. 22(Sat) & 23(holiday)

Contents: Handmade crafts, dolls and toys which are easy to make at the site.



Stage Performance

When: Nov. 23(holiday)

A stage rehearsal will be held on Nov. 14(Fri).

Contents: Dance, magic, chorus, musical performance, etc.
performed within 5 minutes

Applicants: People living or working in Numazu and learning groups in Numazu

*For the exhibition and stage performance, sales persons, instructors, and people who have other demonstration opportunities are asked to refrain.

Where: Cultural Center

How to apply: Hand in or send the application form to Lifelong Education Division. The form is available at City Office or community centers.

Due date: Aug. 29(Fri)

Applications: 〒410-8601 Numazu City Hall

The Introduction of 100 Numazu's Treasure Troves No. 29 Heda Port Festival, the Biggest Event in Heda Area



Heda Port Festival has 55 years' history. No fewer than 4,500 people gather together at the special festival square held at the central pier of Heda Harbor and enjoy the festival full of *Heda's* local color. Before the opening of the festival, an annual memorial service for the crew of Russian warship, the "Diana" is held at *Hosenji* Temple. The two Russian sailors who died in *Heda* sleep in a grave at this temple. After the memorial service, the ceremony of "*Engi*" begins at the central pier. People pray for the safety of the festival. Then, rice ball throwing and the container board

rates are held, following the stage show where people show their favorite songs or dances.

The final event of the festival is the offshore fireworks show. To the sound of *Kuroshio Taiko* (Japanese drums), as many as 1,000 "star mine" are displayed into the night sky of *Heda* Harbor. It really marks the grand finale of this festival.

Heda Harbor Festival

When: July 19 (Sat) 12:30 ~ (no postponement because of rainy weather)

Where: Central pier of *Heda* Harbor

Extra parking lot: The playground of *Heda* Elementary School

* Free pleasure boats will be served during 19:00~21:00

(The passengers are requested to be on board by 20:20.)

Inquiries: *Heda* Tourist Association ☎ 0558-94-3115

Tourist and Exchange Division ☎ 055-934-4747



[Left] The container board race : Many spectators cheer the racers.

[Right] Is he Russian Admiral Putiatin?