

Numazu Newsletter

No. 284

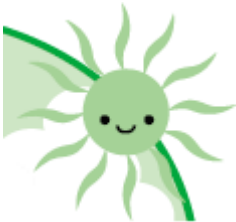
July 15, 2014

Voluntary Supporters
Kalamazoo Division NICE

INFORMATION

<http://www.city.numazu.shizuoka.jp/>

You can get information about Numazu twice a month on this home page and some hard copies issued by Supportive Volunteers at the Tourist Information Office at the Numazu Station, Palette, the City Library Participation, the City Gymnasium, Speakeasy, the Tap Room, Catholic Church, Kato Gakuen, Chiku Centers and the City Hall



Joyful Event Information for Children during the Summer Vacation No.2 (No.1 is written up in the Numazu Newsletter July 1.)

City Library's Summer Programs

Inquiries: City Library ☎ 055-952-1234



*Special Exhibition "The World of *Mado Michio*, a Poet"

• Exhibition

When: July 16(Wed) ~ Aug. 17 (Sun) [Closed: July 28(Mon), Aug. 4(Mon), 6(Wed), 11(Mon)]

Where: Exhibition Hall (4F)

• Story Telling

When: 14:00 ~15:00 on Aug. 12(Tue) and 13(Wed)

Where: #3 Lecture Room (4F)

* Come to the site directly on the day.

• *Waku Waku* Experience Corner

Children can enjoy a puppet show, experience corner about 'light' and storytelling, etc.

When: 9:30 ~14:30 on Aug. 7(Thu)

Where: 4F * Come to the site directly on the day.

Consumers' Class for Parent and Child

Application and inquiries: Citizens' Consultation Center ☎ 055-934-4841

Let's try to weigh food on various scales or balances.

When: 13:30 ~ 15:30 on Aug. 15(Fri)

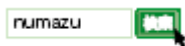
Where: Health Center Cooking Room

Applicants: 3rd ~ 6th graders of elementary school and their guardians in Numazu

Capacity: 15 pairs (in order of arrival)

Things to bring: writing implements, food which applicants want to weigh

How to apply: from 9:00 on July 22(Tue) by phone or electronic application of Numazu City's website



Observation Tour by Bus to Garbage Treatment Plants

Applications and inquiries: Garbage Control Promotion Division ☎ 055-934-4743

When: Aug. 6(Wed) 8:30 ~ 12:15

Meeting time and place: 8:20 at the entrance of City Hall

Tour site: A garbage processing plant, a final garbage incineration plant, Aqua Plaza, etc.

Applicants: Elementary and junior high school students

(Guardians must accompany elementary school students under 4th grade.)

Capacity: 22 students (in order of arrival)

Things to bring: writing implements, drinks, a hat or a cap

How to apply: By phone from 8:30 on July 22(Tue)

Parent-Child Fishery Experience

Applications and inquiries: Fisheries and Seashore Division ☎ 055-934-4753

When: Aug. 22(Fri) 7:00 ~ 12:00 *Cancelled in case of stormy weather.

Meeting place: Car Park at *Shige* Beach

Contents: Experience net fishing, tasting a good catch in a large pot, lottery, fishery class

Applicants: Elementary and junior high school students and their guardians

Capacity: 50 pairs (in order of arrival)

Participation fee: 250 yen per person (for insurance)

Things to bring: Lunch, drinks, a cap or a hat, towels, spare clothing or shoes (in case of getting wet)

How to apply: By phone from 8:30 on July 23(Wed)

Summer Events at Meiji Historical Museum

Applications and inquiries ☎ 055-923-3335

***Let's make *Suruga Tako* (kite)!**

When: Aug. 1(Fri) 9:00 ~ 12:00

Applicants: 4~ 6th graders of elementary school in Numazu City

Capacity: 20 students (in order of arrival)

Participation fee: 20 yen (for insurance)

Things to bring: A pair of scissors

***Let's experience life during the wartime!**

When: Aug. 6(Wed) 10:00 ~ 15:00

Contents: *Suiton*(a dish made of flour dumplings stewed with vegetables) ⇒

Visit to the site of the former ammunition storage site, etc.

Applicants: 4 ~ 6th graders of elementary school in Numazu City

Capacity: 30 students (in order of arrival)

Participation fee: 20 yen (for insurance)

Things to bring: drinks, writing implements, work gloves, a cap or a hat, towels, chopsticks, a bowl for *suiton*.

* Please participate in clothing that you don't have to worry about getting dirty.



*One Day Curator Experience

When: Aug. 7(Thu) 10:00 ~ 15:00

Contents: Lecture and practical instruction about how to deal with data

Applicants: High school students who live or commute to high schools in Numazu City

Capacity: 10 students (in order of arrival)

Things to bring: Lunch, writing implements

* Please participate in clothing that you don't have to worry about getting dirty.

*Study Tour by Bus to World War Historical Sites in the City

When: ①Aug. 8(Fri) ②Aug. 10 (Sun) / 9:00 ~ 16:00

Applicants: Elementary school students and their guardians living in Numazu City and junior high school students (Guardians can accompany.)

Capacity: 23 persons for each day

Participation fee: 20 yen per person (for insurance)

Things to bring: Lunch, a hat or a cap, towels, a flashlight

* Please participate in clothing that you don't have to worry about getting dirty.

◆How to apply for the 4 events above : By phone during July 23(Wed) 9:00 ~ July 30(Wed)

Summer Classes for Parent-Child in the Citizens' Forest

Applications and inquiries: Park and Tree Planning Division ☎ 055-934-4796

Class	Constellation Observation	Wooden Craft	Bamboo Craft
Contents	Let's observe the summer constellation.	Let's make a tool box, a display cabinet, a letter rack, or a wooden clog under the instruction of professional craftsmen.	Let's make a bamboo dragonfly or a bamboo toy gun.
When	Aug. 2 (Sat) 18:30~21:00	Aug. 10 (Sun) 10:00~15:00	Aug. 17 (Sun) 10:00~15:00
Where	Citizens' Forest (Nishiura Kochi)		
Applicants	4 th graders of elementary school ~junior high students and their guardians		
Capacity	50 persons	20 persons	20 persons
	(In case of a lot of applicants, there will be a drawing.)		
Things to bring	Drinks, writing implements, a flashlight, astronomical telescope (if you have)	Lunch, drinks, writing implements, a cleaning rag	Lunch, drinks, writing implements, a cleaning rag
Application limit	July 25 (Fri)	July 31 (Thu)	Aug. 8 (Fri)
	(Application must arrive by the limit day.)		
How to apply	Write all the applicants' names, their addresses, ages (or grades), phone numbers, the class (1 class a postcard) on a <i>ofuku hagaki</i> (double sided postcard) and send it to the address below by the application limit. Address: 410-8601 Numazu City Hall Park and Tree Planning Division		

Summer Events at *Senbon Plaza* on Aug. 10(Sun)

Inquiries: *Senbon Plaza* ☎ 055-962-3313

Longevity Welfare Division ☎ 055-934-4834

***Mobile Aquarium : 10:00 ~ 14:00**

Penguins will come to *Senbon Plaza* from *Awashima* Marine Park.



***Goldfish scooping and yo-yo balloons : 10:00 ~ 14:00**

***Balloon art workshop**

①Let's make a hat shaped like fish.

Reception: 10:00 ~ / Capacity: 50 persons (in order of arrival on the day)

②Let's make an octopus.

Reception: 12:00 ~ / Capacity: 50 persons (in order of arrival on the day)

Kids' *Genki Hiroba* at Chuo *Koen Park*

Application and inquiries: Numazu Running & Skills Station ☎ 055-952-3222

Inquiries: Commerce and Industry Promotion Division ☎ 055-934-4748

When: July 31(Thu) 10:00 ~ 10:45

Contents: Splashing water playfully, playing tag and exercise with a parent and child.

Participants: from 2-year-old kids to elementary school students and their guardians

Capacity: About 30 persons / Participation fee: 500 yen a child

*Look at the website for details. Address: <http://n-sta.com/>



Summer Amusements at Numazu Imperial Villa Park

Inquiries: Numazu Imperial Villa Park ☎ 055-931-0005

Park and Tree Planning Division ☎ 055-934-4795

Amusement	Making origami (folding paper into figures)	Fishing, making water pistol, treasure hunting
Participants	Infants ~ elementary school children	
When	Aug. 2 (Sat), 3 (Sun) 10:00 ~ 15:00	July 25 (Fri) ~ Aug. 26 (Tue) 9:00 ~ 16:30
Participation fee	Free	500 yen(for treasure hunting)
Admission fee to the park	Adults: 100 yen, elementary and junior high school students: 50 yen *The fee for visitors wearing <i>yukata</i> on the days below is free. [July 26(Sat), 27(Sun), Aug. 15(Fri) ~ 17(Sun)]	
Parking fee	Free (only for a standard vehicle)	

Let's Challenge Climbing Mt. Fuji!

Applications and inquiries: NPO *Seishonen Ikusei Kyouiku Kenkyujo*

(Youth Training and Education Research) ☎ 055-941-5007

Civic Collaboration Division ☎ 055-934-4807

When: Aug. 24(Sun) ~ 25(Mon)

Meeting time and place: 13:00 at *Koshin Koto Gakuin* High School (*Shinjuku-cho*)

Applicants: Junior high school students and their guardians

Capacity: 10 pairs (in order of arrival)

Participation fee: 5,000 yen a pair

Things to bring: Mountain-climbing gear

How to apply: By phone or e-mail from 10:00 on July 25(Fri) / e-mail address: info@npo-yter.com

♪ ♪ “*Konoko no Kawaisa*” ♪ ♪

During the summer vacation [July 25(Fri) ~ Aug. 26(Tue)], “*Konoko no Kawaisa*”, a local lullaby sung in Numazu district, will be played over the community wireless system at 18:00 every day. When you hear this melody, make sure where your children are and tell children playing outside to go home.

Inquiries: School Education Division ☎ 055-934-4809

Sumo Comes to Numazu

Three *Yokozuna* (grand champion); *Hakuho*, *Harumafuji* & *Kakuryu*, will come! *Tochihiryu* & *Sagatsukasa* will also come. They are both from *Hiryu* High School in Numazu. Will you come to see them?



When: Oct. 18(Sat), 8:00 ~15:00

Where: Kira Messe Numazu

Fee: 5,000 yen per person and over.

Tickets are available at Numazu Chamber & Commerce 2F (*Yoneyama-cho*), 11:00 ~ 14:00, on Tue., Wed. & Thu. Check the homepage or leaflets at the City Hall, 1F, Multi-purpose Space or the city gym if you want to use fax or mail.

Time	Contents
8:00 ~	Open ~Practice, Shaking hands with fans
11:00 ~	Kids' <i>sumou</i> , Bouts by <i>Jonidan</i> , <i>Sandanme</i> & <i>Makushita</i>
12:00 ~	<i>Dohyoiri</i> & Bouts by <i>Juryo</i> . <i>Yokozuna</i> put on the <i>tsuna</i>
13:30 ~	<i>Dohyoiri</i> & bouts by <i>Makuuchi</i> & <i>Yokozuna</i>

Inquiries: The executive office ☎ 055-929-0340 / Homepage: <http://www.sumou-fujisan.com/>

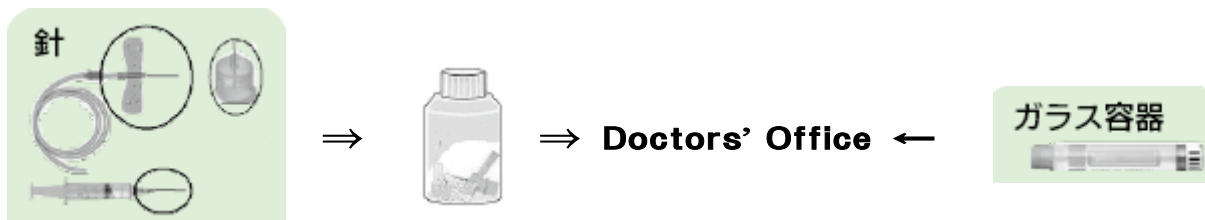
Tourism & Exchange Division ☎ 055-934-4843

Information

Please dump medical trash properly

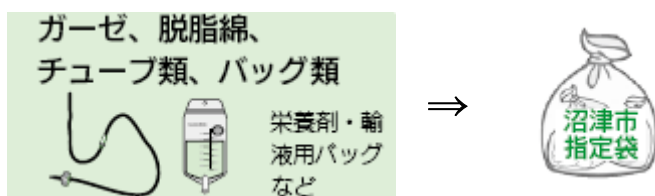
Needles and glass in burnable garbage could hurt collectors. It is dangerous.

***Things you should bring to your doctor's office:** needles and ampule. Needles should be put into the case.



***Things you can dump as burnable:** gauge, cotton, tubes, bags for diet & blood

They should be wrapped with paper. You need to apply beforehand.



Inquiries: Garbage Control Promotion Division ☎ 055-934-4743 or your doctor's office

Events

Toro Nagashi (floating lanterns) on Kano River

Inquiries: Social Welfare Division ☎ 055-934-4824

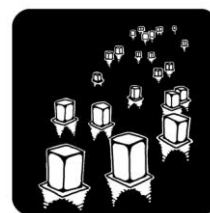
When: July 25(Fri) *Sale of paper lanterns:18:00 ~ / Floating lanterns: 19:00 ~

Where: River bed along the left bank of Kano River (Ayumi Bashi Bridge ~ Onari Bashi bridge)

Price of a lantern: 1,500 yen

※ The posthumous Buddhist name should be written on paper in advance and bring it on the day. (If there are more than one Buddhist names, they will be written as “~ Family Ancestors”.)

※ Those who want to dedicate a Bon lantern to the temple should bring 500 yen a lantern as dedication money.



Numazu Agetsuchi Inari Night Market

Inquiries: Numazu Night Market Executive Committee ☎ 055-963-4556

Commerce and Industry Promotion Division ☎ 055-934-4748

Please enjoy strolling on *Agetsuchi* Shopping Streets. Special food of 20 shops are provided, which you can take out. There will be a special live concert, too. You can enjoy listening to music and eating lots of food outside if you visit the night market.

When: Aug. 7 (Thu) 17:30 ~ 21:00 (Live starts at 19:30.)

Oku Suruga Bay Seaside Festival

Inquiries: NPO Oku Suruga San San Kai ☎ 055-941-3311

Tourism & Exchange Division ☎ 055-934-4747

When: Aug. 3 (Sun) 14:00 ~ 20:30

Where: Open Space at *Uchiura Gyokyo*, Mito Swimming Beach

Contents: Firework shows, monkey showman, Japanese drum performance by children, Lottery event, Toro Nagashi (Floating lanterns), sea-kayaking, etc.



Radio Gymnastic Exercises at Kano River

Inquiries: NPO Numazu City Athletic Association ☎ 055-926-3288

Sports Promotion Division ☎ 055-922-7200

When: Aug. 3(Sun) 7:30 ~ (It will be held even in light rain.)

Where: Chuo Koen Park

※Come to the place directly on the day.



“Wahaha Honpo” Comedians Show

Inquiries: City Cultural Center ☎ 055-932-6111

Cultural Development Division ☎ 055-934-4812

Young Comedians will come to Numazu.

When: Oct. 25(Sat) 15:30 ~ / Where: Numazu Cultural Hall (small hall)

Comedians: “3 gagahezzu”, “Caramel Machine” and “Cherry Yoshitake”

Fee: 3,000 yen for adults, 1,000 yen for the students in high school and below. *Three years old or older children are charged. If your child is under two and plop the kids down in your lap, the charge is free. However, it is charged if the kid needs a seat.

Tickets: July 26(Sat) ~ at Cultural Center Ticket Corner or other ticket centers

Numazu Techno College Open Campus

Inquiries and applications: Numazu Techno College ☎ 055-925-1071

Inquiries: Commerce and Industry Promotion Division(industry) ☎ 055-934-4799

When: 10:15 ~ 14:00 on July 27(Sun) and Aug. 21(Thu)

Where: Numazu Techno College in Ooka

Contents: presentation of the college, visits to facilities of each department, experiencing classes.

Applicants: people who want to go to the college, and their parents

*Contact us or access the homepage about the details.

Website address: <http://www.numazu-vtc.ac.jp/>

Lectures and Classes

Additional Recruitment of “Numazu Citizen’s College”

Applications & Inquiries: Lifelong Learning Division ☎ 055-934-4870

Where: Plaza Verde Convention Hall A

Applicants: People who are junior high school age and over and live or commute to Numazu City

Capacity: ① 200 people ② 100 people (In case of a lot of applicants, there will be a drawing.)

Fee: 1,000 yen per lecture

How to apply: By phone by July 31(Thu)



	When (14:30 ~ 16:00)	Topic	Lecturer
①	Aug. 9(Sat)	Technology as Culture	Mōri Mamoru (Astronaut)
②	Aug. 30(Sat)	How to Use Our Brain to be Happy	Mogi Kenichiro (Brain Scientist)

NICE Chinese Class 2014

Application & Inquiries: Numazu Association for International Communication and Exchanges

☎ 055-934-4717

When: Every Wednesday from Aug. 20 to Nov. 5, 19:00 ~ 20:30 (12 lessons in total)

Where: Cultural Center

Class: Beginner's Class (for people who have not studied Chinese)

Basic Class (for people who have studied Chinese pronunciation)

Capacity: 20 people for each class (in order of arrival)

Fee: 4,500 yen (This fee does not include the price of textbook.)

How to apply: by phone from July 23(Wed) 8:30 ~

*These classes are related to Shizuoka Prefectural College.



Gatekeeper Training Program

A gatekeeper is a person who has the ability to recognize, listen to and help a person who is distressed.

Applications & Inquiries: NPO Shizuoka Tobu Listening Volunteer Network (Chifuku-san)

☎ 090-3580-1757

Inquiries: Handicapped Person's Welfare Division ☎ 055-934-4830

When: ① Aug. 3 (Sun) 10:00 ~ 12:20

② Aug. 6 (Wed) 19:00 ~ 21:00

Where: Doingbis (Shimokanuki-maehara)

Contents: ① Learn about Gatekeeper

② Workshop "Communication by using flowers"

Capacity: About 30 people per class

Fee: 500 yen (for materials)

How to apply: By phone

Recruitment

Promoting Eco-Friendly City Numazu

Applications and Inquiries: Environmental Policy Division ☎ 055-934-4741

■ Recruiting Eco-Friendly Activities in Daily Life

We are recruiting eco-friendly activities in daily life such as waste reduction, saving electricity, etc.

We will have the winners make presentations about the activities at "The 5th Eco-Friendly Activity Contest" at Cultural Center on Feb. 8 (Sun), 2015.

Deadline: Dec. 1 (Mon), *Application must arrive no later than Dec. 1.

■ Green Curtain Photo Contest & Recipe with Green Curtain Products Contest

Why don't you take "A Cool Green Curtain" photo and apply for the contest?



At the same time, we will hold a recipe contest. Create delicious recipe using the product from green curtain and enter your original recipe into the recipe contest.

Deadline: Sep. 16 (Tue) *Application must arrive no later than Sep. 16.

◆ How to apply (for both Contests)

Fill out the designated form which is available at Environmental Policy Division in City Hall 7F, each Chiku Center and City website, and send it to the office by mail, e-mail or hand in.



Information

Temporary Welfare Benefit available at Chiku Center

Inquiries: Temporary Welfare Benefit Office ☎ 055-934-4848

Where	When	Time
Hara Chiku Center	July 29 (Tue), 30 (Wed)	9:30 ~ 16:30
Kanaoka Chiku Center	July 31 (Thu), Aug. 1 (Fri)	
Heda Citizens Information Office	Aug. 4 (Mon), 5 (Tue)	
Ooka Chiku Center	Aug. 5 (Tue), 6 (Wed)	
Shizuura Chiku Center	Aug. 7 (Thu), 8 (Fri)	

Things to bring: identification (residence card), copy of bank passbook for bank transfer

July 31 (Thu) is the Due Date for Property Tax and City Planning Tax Payment

Inquiries: Tax Management Division ☎ 055-934-4730

Please make sure to pay the taxes before the due date. You can also pay at night or on Sunday as follows.

Available at Night: July 24 (Thu), 17:15 ~ 20:00

Available on Sunday: July 27 (Sun), 9:00 ~ 15:00

Where: Tax Management Division in City Hall 2F

National Health Insurance Premium Payment at Night and on Sunday

Inquiries: National Health Insurance Division ☎ 055-934-4727

You can pay the premium at night and on Sunday as follows.

Available at Night: July 24 (Thu), 18:15 ~ 20:00

Available on Sunday: July 27 (Sun), 9:00 ~ 15:00

Where: National Health Insurance Division, City Hall 1F

Information from Health Center

Applications & inquiries: Health Promotion Division (Health Center) ☎ 055-951-3480

Let's have a periodontal disease check-up.

Time: Morning session 9:00 ~ 11:30 / Afternoon session 13:00 ~ 15:30

Where	When
Health Center	July 22(Tue)~25(Fri) Oct. 23(Thu), 24(Fri), 27(Mon) ~ 31(Fri) *Only morning sessions on July 25 and Oct. 31
San-well Numazu	Aug. 19(Tue) ~ 22(Fri) *Only afternoon session on Aug. 19 *Only morning sessions on Aug. 21 & 22

Contents: cavities and periodontal disease check-up

Applicants: people aged 20 or older who live in Numazu

No appointment necessary

July 28 is Japan hepatitis day. Let's have the check-up once-in-a-lifetime.

Viral hepatitis is a disease caused by an infection of the virus, which destroys cells of the liver.

Numazu city offers hepatitis check-up until Oct. 31(Fri).

Applicants: people aged 40 or older who have not had the vital hepatitis check-up before

How to apply: by phone

*The check-up is also offered at Ken Tobu Hokenjo (☎ 055-920-2109)

Free Event

Parent-and-Child Tax Class and Movie Show during Summer Holidays

Applications & inquiries: Numazu Hojin Kai ☎ 055-922-4014

When: Aug. 19(Tue) 13:00 ~ 16:00

Where: Cultural Center (Main Hall)

Movie: *Meitantei Konan "Tenku no Nanpa-sen"*

Applicants: children and their parents

Capacity: 1,500 persons (in order of arrival)

How to apply: Come directly to Numazu Hojin Kai (2-14 Yoneyama-cho, Numazu)

From July 28 (Mon), 9:00 ~ 17:00 on weekdays

Registration of
'Mel Numa':
Numazu city mail magazine

Sending Numazu Topics
via
YouTube & facebook