

# Numazu Newsletter

No. 293

December 1, 2014

Voluntary Supporters  
Kalamazoo Division NICE

<http://www.city.numazu.shizuoka.jp/>

You can get information about Numazu twice a month on this home page and some hard copies issued by Supportive Volunteers at the Tourist Information Office at the Numazu Station, Palette, the City Library Participation, the City Gymnasium, Speakeasy, the Tap Room, Catholic Church, Kato Gakuen, Chiku Centers and the City Hall



A Lower House election is going to be held on December 14 (Sun).  
We should go to the polls on the day!

## Recruitment

### The Photos for Numazu Citizens Calendar 2015

Inquiries: Public Relations Division ☎ 055-934-4703

**Theme: Appeal of Numazu** (seasonal scenery, events, etc.)

**Deadline: No later than Jan. 23 (Fri), 2015**

**Application Rule:** The photo is color print of the lateral position, 4 cutting size or A4 size. Not accept any other size photos or set photos. It should be your own original work, unpublished and taken only in Numazu.

**How to apply:** (choose either ① or ②)

- ① Fill in the application form downloaded from the city website or available at Public Relations Division (City Hall 2F), stick it on the back of your photo and send it to us by mail or hand in.
- ② E-mail us the contents of the application form with the attachment of photo data (JPEG, within 10MB)

\*13 winning works (one per month and one for the cover) will be used for the 2015 Citizens Calendar. Good works other than winning ones will be scheduled to be displayed at photo exhibitions.

\*The works are not returned.

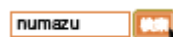
\*13 winners will be given prizes and applicants will be presented tokens.

\*Pay careful attention to the portrait rights of the subjects. Please apply after you have solved all the problems relating to it.

\*Please visit city website or look at the application form for details.

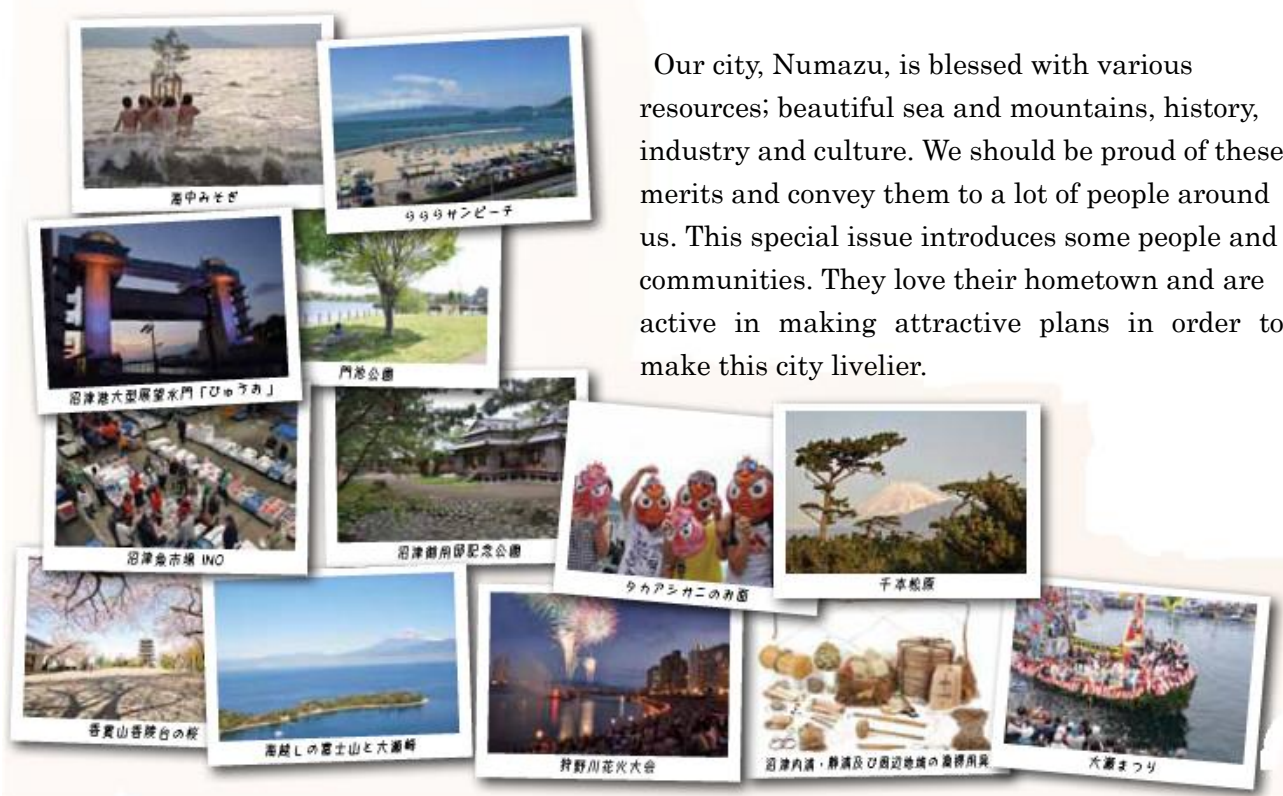
Applications: Public Relations Division, Numazu City Hall ☎ 410-8601

Email: [kouhou-photo@city.numazu.lg.jp](mailto:kouhou-photo@city.numazu.lg.jp)





Inquiries: Public Relations Division ☎ 055-934-4703



Our city, Numazu, is blessed with various resources; beautiful sea and mountains, history, industry and culture. We should be proud of these merits and convey them to a lot of people around us. This special issue introduces some people and communities. They love their hometown and are active in making attractive plans in order to make this city livelier.

**CASE  
1**

**Ukishima Machidukuri Committee**

The committee started in Ukishima area in April, 2013. This area has a beautiful country view and a lot of tea plantations. The members have studied the local history

and held some history classes. They created a character design: *Ukisui~* in order to advertise this area. They are planning to make a guide map and sign boards indicating historical sites in the area. The farmers' market is held at '*Nigiwai hiroba*



*Yudai Festa*' (opposite the South exit of Numazu Station) every Saturday. Farmers' market: between 9:00 and 13:00 (except for the first Saturday)

It is held on Dec. 13 & 20.

Facebook: <http://www.facebook.com/ukishima2014>



**CASE  
2**

## ~The Wedding Parade Made up like Foxes~

### **The Revival of Old Event in *Agetsuchi* Shopping Street**

This event revived in 2010 after an interval of 50 years. It has become more popular year by year, and now has become one of the special events of autumn among Numazu citizens.



Inari Shrine is the place where the goddess of harvest is worshipped. The fox is said to be a messenger of the goddess of cereals. This year the parade started at Numazu Harbor. A bride made up like a fox got on the Numazu ferry boat, went up the Kano River, and met a bridegroom also made up like a fox. The wedding ceremony was conducted at *Agetsuchi* Asahi Inari Shrine along the river side. After the ceremony, riding on a *jinrikisha* (rickshaw), the wedding couple paraded through *Agetsuchi* Shopping Street to central urban areas followed by participants who were also made up like a fox. As everyone was made up like a fox if he or she wanted, the precincts around the shrine were wrapped in an unusual atmosphere. Both participants of the parade and a good crowd celebrated the just-married couple.

‘The special project of this event is that everyone can not only see but also participate in the parade.’ says Miss Mine, a director of *Agetsuchi* Promotion Association.

At the river side, Kano River Local Market was held and people enjoyed buying and eating various products of Eastern Shizuoka. Music concerts and workshops were also held in the open air.

Appreciating the cooperation of the shopping streets and the high school students who joined the festival, Miss Mine said, ‘I hope their experience of seeing and joining the event will lead to the revitalization of the city.’

**CASE  
3**

## Numazu Volunteer Tour Guide

“Numazu city has an abundance of nature loved by writers and artists, many historical sites and the marvelous view of the world’s cultural heritage, Mt. Fuji,” says Mr. Oya, chairman of Numazu volunteer tour guide association. There are 68 members in their forties to eighties now and their motto is “guiding with pleasure anywhere at any time.” Their activities range from guiding tourists to arranging field trip for students. Mr. Oya says, “It will be our pleasure to hear visitors love Numazu and want to come here again.” [Guiding the visitors around Passion for the hometown is the motivation of their activities.



the town]



## CASE 4

### Numazu Short Movie Festival

This festival is a contest which was held in February. A lot of Numazu fans took part in the event and 'Numazu' created by Mr. Yamamoto Hiroki (photo) won the prize. His work is full of the beauty of our city. He said, "I was excited to see a marvelous star-spangled sky in Heda Pass. I'd like to take pictures of natural beauty and traditional events of this city from now on."



[ YouTube: <http://www.youtube.com/user/numazucity> ]

Why don't you introduce the city to a lot of people with us?

## Lecture & Classes

### Stop Declining Birth Rate & Activate Local People

Inquiries: Civic Collaboration Division ☎ 055-934-4807

Where: Plaza Verde (Convention hall B)

When: Jan. 13(Tue), 2015, 13:00-15:30

Capacity: 300 persons (first-come first-served basis)

How to apply: By phone or fax from Dec. 8 (Mon) 9:00. Get the form from the city homepage.

Contents:

#### ◆13:15 ~ Lecture "Making Society that Young People and Women are active"

Lecturer: Mr. Hiroya Masuda(photo), the head of "Discussion of Declining Japanese Population" in Japan *Sosei* (activate Japan) Conference



The Conference was set up in 2011 to make the Big Earthquake a chance To create a new Japan. It warns that the population of young women (20 ~ 39 yrs) could decline to almost 50% in 896 municipalities till 2040.

#### ◆14:30 ~ Panel discussion "Let's think of declining population of the eastern *Shizuoka* prefecture"

Panelists: *Hiroya Masuda*, Mayor *Hiroyasu Kurihara*, & others

## Information

### Imazawa Chiku Center Opens on December 13 (Sat)

Inquiries: Community Association and Promotion Division ☎ 055-934-4716

The facility adopting universal design is expected to be a new site for community activities.

#### ■ Outline of Facilities

Address: 527-21 Imazawa-aza-nakamachi

Gross floor area: 1497.70 m<sup>2</sup>

Parking lot: 21 cars (including 2 lots for barrier free)

#### ■ Usage guide

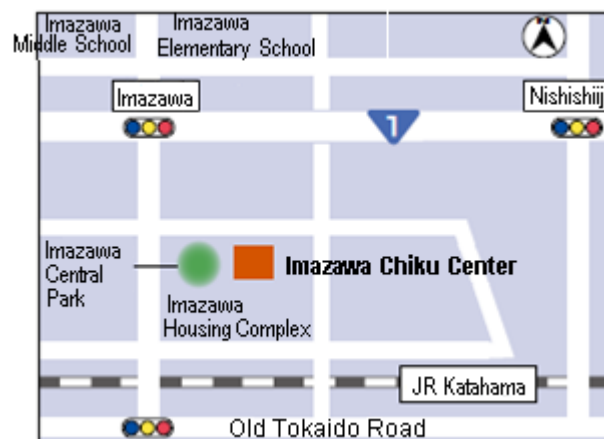
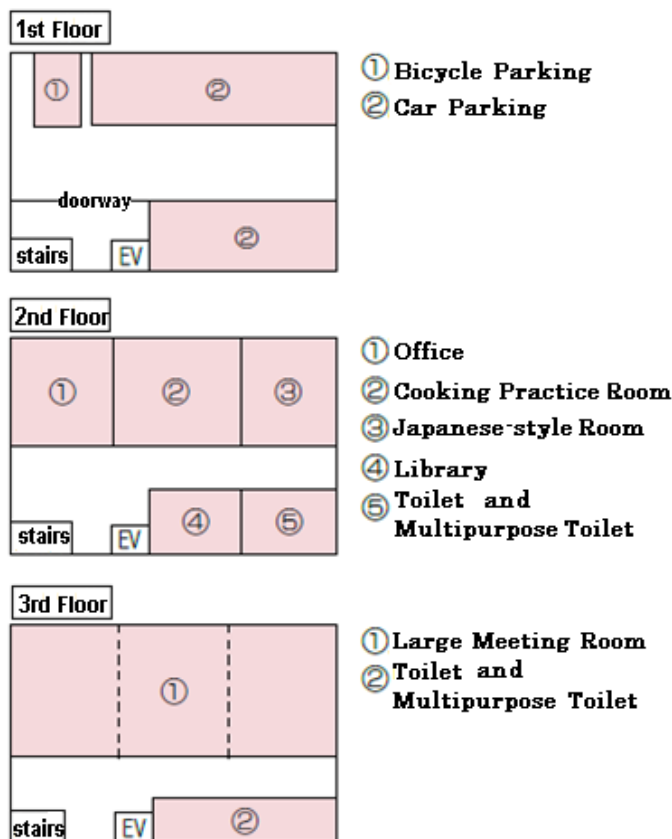
Opening time: 9:00-21:00

Closed: Mondays, the day after holidays, the year-end and New Year holidays

How to apply: in person

Applications and Inquiries: Imazawa Chiku Center ☎ 055-969-0610 (from Dec. 13 (Sat))

※Please contact Community Association and Promotion Division for facility usage reservation before Dec. 13 (Sat).



Mr. Iwao Okawa

(Chairman of Imazawa Chiku Community Promotion Committee)

Our final goal is to make Imazawa a nice town to live in without any accident or incident. I hope this Chiku Center will become a major base for community people to promote friendship and to develop cultural literacy.

## **Child Raising**

### **Story Telling Festival**

Inquiries: City Library ☎ 055-952-1234

Both parents and children enjoy eco-works, joyful stories, hand plays together.

When: Dec. 13 (Sat) // Works=13:00-13:30 / Story telling=13:45-15:00

Where: City Library (4F)

Capacity: 200 people (first-come-first-served basis)

## **Events**

### **Thanks, Mr. Mikuni - the Second Memorial Project**

Inquiries: Thanks, Mr. Mikuni Executive Committee Office

(Numazu's Treasure Troves Promoting Division) ☎ 055-934-4879

The second memorial project on Mr. Rentaro Mikuni will be held.

#### **\*Exhibition**

When: Dec. 1(Mon)-23(Holiday), light up until 21:00

Where: *Numashin* Street Gallery at Numazu *Shinkin* Bank, H.O.

#### **\*Screening**

When: Dec. 14(Sun)

①10:00- (distribution of ticket at 9:00) / ②14:00- (distribution of ticket at 12:30)

Where: Numazu Shinkin Bank, H.O. (4F Hall)

#### **\*Films**

Titles: ① *Rikyu* ② *Honjitsu kyushin* (No consultations today)

\*Comments on the charms and highlight of Mikuni films from 13:20.

Capacity: 200 people each time (first come first served basis)

### **Lecture on Numazu Citizen's Charter – TV *Terakoya*(private school) Public Recording**

Inquiries: Numazu Citizen's Charter Promotion Meeting Office

☎ 055-934-4807 / Fax: 055-931-2606

When: Jan. 23(Fri), 2015, 13:15- (Doors Open: 12:30)

Where: Cultural Center (Small Hall)

Theme: "Connection between people", "Work hard - my favorite Japan"

Lecture: Mr. Daniel Kahl (talent)

Capacity: 300 people (first come first served basis)

How to apply: by phone or fax at 9:00 on Dec. 8(Mon)



### **The 45th Numazu Agriculture and Forestry Festival**

Inquiries: Numazu Agriculture and Forestry Executive Committee ☎ 055-933-7009

Inquiries: Agriculture and Forestry Division ☎ 055-934-4751

When: Dec. 14(Sun), 9:30-14:00 / Where: Plaza Verde (Multi-purpose hall)

Contents: spot sale of farm products, auction, product sale, various experience corners

\*Please use public transportation.

**Enoura “Mizu-shugi(splashing water over newlyweds), Hadaka-mairi(worshiping in nudity)”**

Inquiries: Koshiba-san, Enoura traditional culture preservation Society ☎ 055-939-0914

Cultural Promotion Division ☎ 055-952-0844

It is a traditional event lasting about 250 years and is specified in the intangible folk cultural heritage of the prefecture.

When: Jan. 2(Fri), 2015 < *Mizu-shugi* starts at 18:00. / *Hadaka-mairi* starts at 20:30. >

(They will be carried out in case of rain.)

Where: the precinct of *Sumiyoshi Jinja* Shrine, Enoura

\**Amazake* and *Oshiruko* will be served free of charge.

\*Looking for attendants of *Hadaka-mairi*. Please contact us about the details.

**Kano River Health Marathon**

Inquiries: Sports Promotion Division(City Gym) ☎ 055-922-7200

When: Dec. 14(Sun), 9:45- (It will be canceled in case of rain. Reception from 8:40 to 9:20)

Place to meet: Central Park

Events: 2 km, 4km

Applicants: people who live in Numazu and primary school students and older (primary school students need the consent of their parents.)

\*Come to the place on the day.



**Events of Fureai Koryushitu at San-Well Numazu**

Applications & Inquiries: San-Well Numazu Fureai Koryushitsu ☎ 055-922-1501

Inquiries: Social Welfare Division ☎ 055-934-4824

\****Fureai Christmas*** ; Let's play with Santa Claus!

When: Dec. 20 (Sat), 10:00-

Where: San-Well Numazu (*Fureai Koryushitsu*)

Contents: musical performance by Yume Club Ashitaka, balloon game

Capacity: 80 people (first come first served basis)

How to apply: by phone or come to the office at 9:30 on Dec. 8(Mon)



***\*Fureai Hiroba***

When: Jan. 17(Sat), 2015, 9:30-12:00

Where: San-Well Numazu (*Fureai Koryushitsu*)

Contents: jazz, pop performance, health class for elders, play of old days, baby massage

\*Come to the place on the day.

\*If you want to get the baby massage, you must have the application. (Applicants: children aged up to one and half years old and their parents. Capacity: 40 pairs (first-come-first-served basis).

How to apply: by phone or come to the office at 9:30 on Dec. 8(Mon))

## **Lectures & Classes**

### **Life Saving Class**

Applications & Inquiries: Emergency Work Station ☎ 055-921-9999

When: ①Basic lifesaving class : Dec. 21(Sun), 9:00-12:00

②Advanced lifesaving class: Jan. 18 (Sun), 2015, 9:00-17:00

Where: Lifesaving Emergency Work Station (in City Hospital site)

Contents: Cardiopulmonary resuscitation methods with AED (Automated External Defibrillator)  
(Advanced class includes methods for infants), etc.

Applicants: People over junior high school age living in or commuting to the city

Capacity: about 30 persons for each class

How to apply: by phone by Dec. 18(Thu) for Basic / by Jan. 15(Thu), 2015 for Advanced



### **Listening Volunteer Training Class**

Application & Inquiries: Numazu Social Welfare Council ☎ 055-922-1500

Inquiries: Social Welfare Division ☎ 055-934-4824

Listening volunteer helps someone in trouble by listening to what he/she says.

This class is for training listening volunteers.

When: Jan. 20(Tue) and Feb. 3(Tue), 2015, 10:00-15:00 (two times in total)

Where: San-Well Numazu (2F Large meeting room)

Applicants: those who haven't ever had the class

Capacity: 30 persons (first-come, first-served basis)

How to apply: by phone from Dec. 8(Mon), 9:00



### **Eco Craft Class for Beginners at Senbon Plaza**

Applications & Inquiries: Senbon Plaza

Address: 1910-206 Hon Aza Senbon, Numazu City 〒410-0867 ☎ 055-962-3313

Inquiries: Longevity Welfare Division ☎ 055-934-4834

This Eco craft class is easy for beginners. Let's make everyday sundries and bag.

When: Jan. 8(Thu)- Mar. 19(Thu), 18:30~20:30 (10 times in total, every Thursday except Feb. 26)

Where: Senbon Plaza (ceramic room)

Applicants: those over 18 years old (except high school students)

Capacity: 16 people (If there are too many applicants, a drawing will be held.)

Fee: 1,200 yen (for materials)

How to apply: send double post card written your address, name, age, phone number and eco craft

Deadline: not later than Dec. 15(Mon)

\*Sample works of Eco craft can be exhibited at the small gallery in Senbon Plaza  
from Dec. 2(Tue) to 14(Sun).



### **Skating Classes for Beginners and Skaters at the Intermediate Level**

Applications and Inquiries: Numazu Skating Association, Suzuki-san ☎ 080-6913-5847

Inquiries: Sports Promotion Division ☎ 055-922-7200

When: 12/20(Sat), 12/27(Sat), / [in 2015] 1/24(Sat), 1/31(Sat), 2/14(Sat), 3/14(Sat)

(The bus will leave at 7:00, and come back to Numazu at 14:30 and on Dec. 27, leave at 11:30 and come back at 18:30.)

Where: *Asagiri Okugai Katsudo* Center (Fujinomiya City)

Where to meet: Bus rotary at the North exit of Numazu Station

Applicants: pre-school toddlers and above

Capacity: About 50 people each day

Admission: 3,500 yen per class (including ice rink charge, fare and insurance)

How to apply: By phone or e-mail, informing your address, name, birth date, phone number and the date you want to attend. Address: [numazu\\_club@yahoo.co.jp](mailto:numazu_club@yahoo.co.jp)

\*Please ask us for the details.



### **Recruitment**

#### **Numazu San-San Lady**

Applications and inquiries: San-san Numazu Promotion Committee Office

〒410-8601 Numazu City Hall,

Tourism and Exchange Division ☎ 055-934-4747

Term: 2 years (from Apr. 1, 2015 to Mar. 31, 2017)

Applicants: A person of 18 and older at Apr. 1, 2015 who can work for about 30 days a year

Capacity: one person or so



How to apply: Mail or bring your resume, an essay about “impression of Numazu, feeling for Numazu”, photographs of your full-body and face taken within 6 months.

How to select: Interview will be held on Jan. 25(Sun), 2015 at the Cultural Center

\*Your applications will not be returned.

\*Besides a uniform, fee for activity, 100,000 yen will be given to an adopted person.

Term for application: from Dec. 12 (Fri) to Jan. 16 (Fri), 2015 (No later than the deadline)

#### **Tanka (thirty-one syllabled verses) on the subject of child-rearing and so on**

Applications and Inquiries:

Children's Future Division in Shizuoka Health & Wealth Department ☎ 054-221-2037

Inquiries: Child Support Division ☎ 055-934-4842

*Tanka* on the subject of meeting, marriage, and birth, child-rearing is invited.

Sections for applicants: Section for adults, section for juniors (high school student and younger)

Judges: Ms. Tawara Machi and others

Term for application: from Dec. 8 (Mon) to Jan. 8 (Thu), 2015

※Please ask us about the details.

## **Information**

### **Night & Sunday Windows for City Tax Payment**

Inquiries: Tax Payment Division ☎ 055-934-4730

Nighttime window: Dec. 9(Tue), 18(Thu), 17:15-20:00

Sunday window: Dec. 14(Sun), 9:00-15:00

Where: City Hall (2F Tax Collection Division)



### **Night & Sunday Windows for National Health Insurance**

Inquiries: National Health Insurance Division ☎ 055-934-4727

Nighttime window: Dec. 9(Tue), 18(Thu), 18:15-20:00

Sunday window: Dec. 14(Sun), 9:00-15:00

Where: City Hall (1F National Health Insurance Division)



### **Weekend Consultation for Water Bill Payment**

Inquiries: Water & Sewage Service Division ☎ 055-934-4853

When: Dec. 20(Sat) 9:00-12:00

Where: Water Service Department Office (1F Water & Sewage Service Division)

### **Information from Numazu City Hospital**

Inquiries: Medical Professions Division in Numazu City Hospital ☎ 055-924-5100

For a while Numazu City Hospital stops to accept patients of the urology department who need to stay in or undergo a surgery operation, because the regular doctor resigned.

### **Readjustment about limitation of Receiving Double Child-rearing Allowance and Public Pension**

Inquiries: Child Support Division ☎ 055-934-4827

So far people who receive the public pension were not able to receive the child-rearing allowance that is issued to single parent family. From December 1(Mon), if the amount of the public pension is lower than that of the child-rearing allowance, you can get the amount of the difference. However, there is income limitation.

※Please ask for the details

### **Due Date of Salary Payment Report**

Applications & inquiries: Municipal Tax Division ☎ 055-934-4735

Due date: Feb. 2(Mon)

When submitting more than two offices, please include the list of all offices you have paid salaries.

If you want to change to an ordinary collection, you need to submit a change reason note.

※You can submit it by eLTAX or electronic medium.(You need to apply in advance.)

Website: <http://www.eltax.jp/>

※When there are over 1,000 reports (from 2012 to 2014), the office is required to submit them by eLTAX or electric medium.

## Subsidy System for Antiseismic Reinforcement

Applications & inquiries: Architecture Guidance Division ☎ 055-934-4759

### ◆ Subsidy for seismic reinforcement of wooden houses

For the wooden houses built before May 31, 1981 we will subsidize a part of the seismic retrofit design or reinforcement fee.



#### Step 1 Free diagnosis by an expert

*Taishinhokyo Sodanshi* (A seismic retrofit advisor) will check the earthquake resistance of your house for fee.

#### Step 2 Drawing of Reinforcement plan

It costs 96,000 yen. (144,000 yen for homes where only elderly people are a resident.)

#### Step 3 Seismic Retrofit Construction

It costs 500,000 yen. (700,000 yen for homes where only elderly people are a resident.)

\*You need to apply for the subsidies before the construction starts.

### ◆ Subsidy for removal or repair of concrete block walls

For the removal of concrete block walls which might easily collapse or fall — they front on the street and are over 60 cm in height — we will subsidize a part of the removal or repair fee.

Available for	Subsidy		Rate
Concrete block walls along the Tsunami evacuation route	Removal	The cheaper cost (32,000 yen per meter × length or estimated removal cost)	100%
	Repair	The cheaper cost (38,4000 yen per meter × length or estimated repair cost)	100%
Concrete block walls other than those above	Removal	Half of the cheaper cost (8,900 yen per meter × length or estimated removal cost)	50% (Max100,000yen)
	Repair	Half of the cheaper cost (38,400 yen per meter × length or estimated repair cost)	50% (Max250,000yen)

## Prefectural Year-End Traffic Safety Campaign

Inquiries: Traffic Control Office ☎ 055-934-4742

We will carry out prefectural year-end traffic safety campaign from Dec. 15 (Mon) to 31(Wed).

The main points of the campaign are as follows.



- Prevention of traffic accidents involving children and the elderly
- Prevention of traffic accidents after dusk and at night
- Extermination of drunken-driving
- Prevention of rear-end collisions

Please wear light reflective material and turn car lights on from 16:00.

### **Dog Registration, Rabies Vaccine, and Report of the Changes**

Inquiries: Clean Center Management Division ☎ 055-933-0711

A dog over 3 months old must be registered once in its lifetime and given a rabies vaccine once a year (April ~ June).

Registration site: Clean Center Management Division (Kamikanuki san no hora),

Environmental Policy Division (City Hall 7F), Each Citizens' Information Offices

※Please ask the designated animal hospitals if you want to do both registration and vaccination at the same time.

※If there are any changes in the details of your dog's registration, such as change of owner, or if the dog has died, you must report the changes to the Clean Center Management Division.

※Put the dog license tag and the rabies vaccination certificate tag on your dog's collar. The license tag is also identification for your dog, which is helpful if your dog gets lost.

### **Message Board of Love for *Potchi* and *Nyanchi***

Inquiries: Environmental Policy Division ☎ 055-934-4740

This is a message board for connecting citizens who want to offer their dogs or cats with those who want to have ones. The way of utilizing this board is as follows; those who want to offer their dogs or cats are supposed to receive a message card at the Environmental Policy Division (City Hall 7F), filling out the card and put it up on the message board (City Hall 1F Lobby) with a photo of their dogs or cats. Those who want to have a dog or a cat are supposed to contact directly the owners of the preferable dogs or cats on the board. The period of putting the card up on the board is one month.

※No one can utilize this board for profit.

### **To Report Downed Wires Please Call Us**

Inquiries: Tokyo Electronic Power Company Numazu Customer Center ☎ 0120-995-902

Inquiries: Crisis Management Division ☎ 055-934-4803

It is possible that electrical wires may be cut and sign and trees blown off during severe weather. If you find downed wires, please keep away and call us.

### **The 3rd Job Guidance Fair for University Student**

Applications & inquiries: Shizuoka Economy, Trade and Industry Employment Promotion Division  
☎ 054-221-2573

Inquiries: Commerce and industry Division ☎ 055-934-4749

When: Dec. 17(Wed), 12:00-16:00

Where: Plaza Verde (Multi-purpose hall)

Contents: Job interview with recruitment officer

Applicants: University students who are graduating in March, and job seekers who graduated from university within 3 years

※Please visit the website for the details.

Website: <http://www.koyou.pref.shizuoka.jp/>



## Information from Health Center



Applications & Inquiries: Health Promotion Division ☎ 055-951-3480



### “Sotsuen (Quit Smoking)” Class: Let’s learn how to quit smoking!

When: Jan. 16 (Fri), 2015, 19:00- 20:30

Where: Health Center (2F Dai-2 & Dai-3 kaigishitsu)

Contents: measurement of lung function, new methods of quitting smoking

\*You can have an individual consultation after the class if you wish.

Applicants: People who live in or commute to Numazu and are interested in quitting smoking

Capacity: 15 people (first-come first-served basis)

How to apply: Tell us on the phone or email us about your name, address, age, phone number and the class name “*Sotsuen Kouza* (quit smoking class)” after Dec. 8 (Mon), 8:30.

Application: Health Promotion Division in Health Center ☎ 055-951-3480

Email: [kenkou@city.numazu.lg.jp](mailto:kenkou@city.numazu.lg.jp)



### Yorimichi Otokojuku (Workout Class for Men)

This class is an anti-obesity program for working men.

When: every Wednesday (Jan. 7, 2015 - Mar. 4, 2015) except Feb. 11, 19:30-20:45 [8 times in total]

Where: San Well Numazu (Tamokuteki Hall)

Contents: measurement of body composition and physical fitness, workout, lectures

Applicants: Men (age 30-50s) who live in or commute to Numazu

\*Anyone whose doctor has advised them to avoid strenuous activity may not join this class.

Capacity: 20 men (\*In case of too many applicants, we will have a drawing.)

Fee: 160 yen (for insurance)

What to bring: exercise clothes, indoor athletic shoes, towels, drinks

How to apply: Fax or email to us your name, address, age, phone number, the class name “workout class” and your transportation to San Well Numazu.

Due date of the applications: Dec. 19 (Fri)

Application: Kenko Zukuri Ka (Health Promotion Division in Health Center)

FAX: 055-951-5444 / E-mail: [kenkou@city.numazu.lg.jp](mailto:kenkou@city.numazu.lg.jp)



### The City Starts to Subsidize Artificial Insemination Cost

The city will begin to subsidize a part of the costs of artificial insemination which are not covered by medical insurance. Please contact the Health Center for further details before applying.

Applicants: Couples who meet the following conditions ①～③ may be eligible.

① They are spouses and couples reporting the marriage.

Either one of the couples and spouse has been a registered resident of Numazu for more than a year.

② Those whose total income in the previous year was lower than 7,300,000 yen.

③ The wife (The woman undergoing treatment) must be under 40 years of age when the treatment begins

Subsidy: 70 % of the total amount of the cost (Up to a maximum of 63,000 yen)

How to apply: Come to the Health Center directly within the same fiscal year as when your treatment starts.

\*The subsidy covers part of the cost of treatments which started after Apr. 1, 2014.

\*Please ask us about applying or check the city website.



## **Be Careful of Infectious Diseases in Winter!**

### **\*Norovirus**

It is very contagious and tends to cause acute gastroenteritis.

Symptoms: Vomiting, stomachache, diarrhea, fever etc.



In order not to spread the virus,

\*Clean surfaces and counters and then disinfect them with a bleach solution. After someone vomits or has diarrhea, immediately clean and disinfect contaminated surfaces in the area where the incident occurred.

\*Remove and wash clothes and linens that are soiled with vomit or feces. Wear rubber gloves and wash your hands after touching these items. Wash clothes and linens with detergent for the maximum cycle length, and then tumble dry.

### **\*Influenza**

Symptoms: sudden fever over 38 degrees, sore throat, coughing, headaches,  
joint aches, feeling run-down



In order not to spread the flu,

\*Go to see a doctor as soon as possible if you have these symptoms

\*Do the followings for “cough etiquette”

When you cough or sneeze in front of others, turn away from them. Cover your mouth and nose with tissue. Wear a mask if you have a fever, cough or sneeze.

\*Avoid staying in the crowds if it is not necessary.



The easiest and most effective way to prevent these viruses is washing your hands.

Please make sure to wash your hands with soap and water when you get home or before you eat.

## Tour of 100 Treasure Troves in Numazu NO. 34; MEIJI HISTORICAL MUSEUM Museum Handing Down Our Local History



This year is the 30<sup>th</sup> Anniversary of Meiji Historical Museum in Numazu City, which was opened in October, 1984 as a museum that should make the history of our city's modernization known to the public with the exhibition of historical sources and material on Ebara Soroku, our local great person, and Numazu Military Academy, Shizuoka Tokugawa Family's clan school, and others. This museum has the role of collecting, preserving, researching and studying our local historical sources, so there are a lot of precious writings about

this city in the modern era as a large collection in here. In the permanent exhibition, visitors can learn the history of this city during the time from the Sengoku period (the age of provincial wars) to Meiji era. In addition, it has been handing our local history down to the generations, holding events where visitors can enjoy learning history and culture, such as special exhibitions on many different themes, lectures on history, annual Soroku Festival, and so on.

### MAP around the facilities



Where: 372-1 *Nishi-Kumando*

Hours of opening: 9:00-16:30

Closed days: Mondays, the next days of National

Holidays, the last day of each month (in case of weekday), and the year change period

Admission fee: Adult = 200 yen / Junior and elementary school children = 100 yen (Children living in the city are free of charge.)

### ① Bronze Statue of Ebara Soroku

Soroku is our local great person who devoted himself to the development of education and industry in Numazu. Residence of Ebara Soroku used to be on the premises of the facilities, so the restored house is exhibited inside the building.



### ② Exhibition Rooms (3, 4 F)

Historical sources and material about Ebara Soroku and Numazu Military Academy are exhibited. Visitors can learn the atmosphere at the time from them.



## Memorial Special Exhibition for the 30<sup>th</sup> Anniversary; 'Numazu Military Academy and its Time'

Applications & Inquiries: Meiji Historical Museum ☎ 055-923-3335

Newly found historical sources and material of Numazu Military Academy are to be seen in this special exhibition.

When: Dec. 6 (Sat) - Feb. 23 (Mon), 2015 / Where: 3F Exhibition Room

### ◆Lecture Meeting on History

When: ①Jan. 24 (Sat), 2015 / ②Feb. 14 (Sat), 2015 / ①② 13:30-16:00

Where: 2F Lecture Room

Themes: ①Military System and Officers' Education at the Time from the Bakumatsu Period (End of Edo Era) to Meiji Restoration ~ Heritage of Edo Shogunate Army and Foundation of Japan Army ~

②Numazu Military Academy and its Time

Lecturer: ①Asakawa Michio san (Professor at Nihon University International Relations Department)

②Higuchi Takehiko san (Professor at National Museum of Japanese History)

Fixed number: Approximately 100 persons for each lecture

How to apply: By phone or please come to the museum and apply directly / after Dec. 6 (Sat)

### ◆Gallery Talk

Curators of the museum will provide a commentary on exhibits.

When: Dec. 13 (Sat), Jan. 10 (Sat), 2015, Feb. 7 (Sat) 2015

14:00- (for about 30 minutes on each day)

※No need for applications. Please come to the place directly on the day.

---

## Numazu City in 2014 ~Looking back on the Year with Several Pictures~



Feb. 9

### **Numazu Eco-friendly activity Contest**

Some organizations or companies made a presentation about Eco-friendly activity.



Feb. 13

### **Crown Prince Climbed the Numazu Alps**

Crown Prince climbed the Numazu Alps and enjoyed the view from the mountain. In March, his daughter, Ms. *Toshinomiya Aiko*, wrote an essay about her experience in Numazu.





Apr. 7

### **Shizuura Elementary and Junior High School Opening Ceremony**

Shizuura Elementary and Junior High School is the first public school in Shizuoka, which has the facility of both the elementary school and the middle school. It opened in Shizuura district. The students have a junior and senior high school life through nine years at the school continuously.



June 8 - Aug. 24

### **Toko Shinoda Mural Paint Exhibition**

There is a Toko Shinoda's mural paint in a drawing room at the city hall(4F). The picture was open to public.



June 25

### ***Ekimae Nigiwai* Park Has Opened.**

It opened in front of JR Numazu South Exit. At the park, there are a lot of places to enjoy such as a beer garden and market booths.



July 2

### **Orange Port Appeared on the Stage at Japan Expo.**

"Numazu International Goodwill Idol, Orange Port" went to France to introduce Japanese culture and Numazu city.



July 20

### **Plaza Verde Opening Ceremony**

In Plaza Verde, there are three facilities such as Meeting rooms, Exhibition Rooms and the Hotel. In the opening event, International forum and the flower arrangement competition called "Asia Cup 2014" were held.



July 21

### **Azul Claro Tried Hard to Promote J3 League.**

Azul Claro had a game on the day, and the team invited many Numazu citizens. 2,365 supporters came to cheer up the team.



Aug. 29 ~ Sep. 7

**A Memorial Service: “Thank you, Rentaro Mikuni!”**

Rentaro Mikuni was a Numazu city ambassador. He passed away last year, and his memorial exhibition was held. In the exhibition, his movies, pictures and his belongings were exhibited.



Sep. 11-13

**Numazu *Jiman Festa* (Food Festival)**

There was a Numazu food festival at Chuo Park. A lot of local foods were served at the festival.