

# Numazu Newsletter

No. 295

January 15, 2015

Voluntary Supporters  
Kalamazoo Division NICE

## INFORMATION

<http://www.city.numazu.shizuoka.jp/>

You can get information about Numazu twice a month on this home page and some hard copies issued by Supportive Volunteers at the Tourist Information Office at the Numazu Station, Palette, the City Library Participation, the City Gymnasium, Speakeasy, the Tap Room, Catholic Church, Kato Gakuen, Chiku Centers and the City Hall



## Event

### International Sports Meeting

Inquiries & Application: NICE Office (Civic Collaboration Division) ☎ 055-934-4717

When: Feb. 7(Sat), 13:00-16:00

Where: City Gymnasium

Contents: curolling, badminton, soft volleyball and others

Capacity: 50 foreigners and 50 Japanese

Things to bring: shoes (you wear indoors), towels

How to apply: by phone



## Information

### Uchiura Chiku Center Opens on February 1 (Sun)

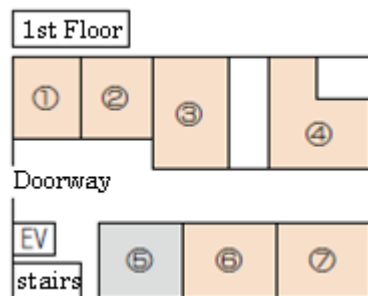
Inquiries: Community Association and Promotion Division ☎ 055-934-4716

The facility adopting universal design is expected to be a new site for community activities. At the same time, Uchiura Citizens Information Office will move to Uchiura Chiku Center.

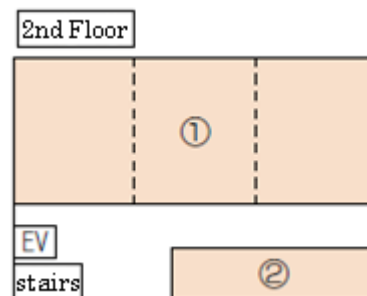
#### ■ Outline of Facilities

Address: 249-3 Uchiuramito-aza-Shinyashiki

Gross floor area: 825.02 m<sup>2</sup>



- ① Office
- ② Small Meeting Room
- ③ Library
- ④ Restroom
- ⑤ Citizens Information Office
- ⑥ Japanese-style Room
- ⑦ Cooking Practice Room



- ① Large Meeting Room
- ② Restroom and Multipurpose Toilet

#### ■ Usage Guide

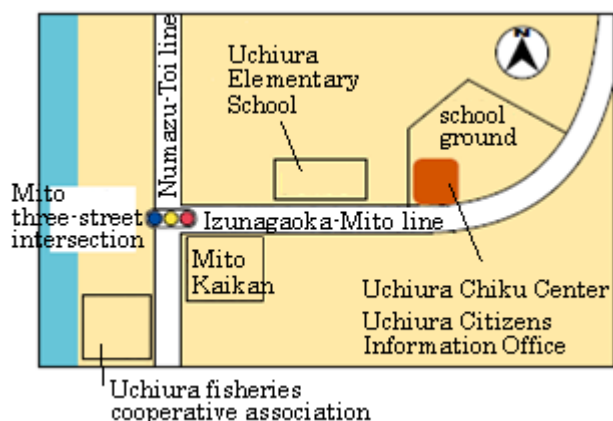
Opening time: 9:00-21:00

Closed: Mondays, the day after holidays, the year-end and New Year holidays

How to apply: in person

Applications and Inquiries: Uchiura Chiku Center ☎ 055-946-1100 (from Feb. 1 (Sun))

※Please contact Community Association and Promotion Division for facility usage reservation before Feb. 1 (Sun).



#### Uchiura Citizens Information Center

will move to Uchiura Chiku Center.

The new office will begin operations on Feb. 2 (Mon). The service in the current office ends on Jan. 30 (Fri).

Inquiries: Uchiura Citizens Information Center ☎ 055-943-2044



**Mr. Sadahiko Niwa** (Chairman of Uchiura Community Promotion Committee)

The Uchiura Chiku Center, which people in Uchiura have been waiting for a long time, will finally open. I hope this Chiku Center will become a new base for community activities to interact with all generations.

## Events

### 2015 Numazu Flea Market & Consumer Exhibition

Inquiries: Garbage Control Promotion Division ☎ 055-934-4743

Civic Consultation Center ☎ 055-934-4841

When: Feb. 1(Sun) 10:00-14:30

Where: Plaza Verde (Multi-purpose hall & Civic salon)

Fee: free ※Please bring your own bag for shopping.

#### ◆Flea Market

There are 176 booths. You may find an item that you have been looking for.

#### ◆Consumer Exhibition

<!! Stage Events !!>

Time	Contents
11:00 ~	Consumer's life 'Storytelling with pictures'
11:40 ~	Consumer's <i>senryu</i> (humorous haiku) introduction
12:20 ~	Consumer's life quiz
13:30 ~	Drug-sniffing dogs demonstrations



<!! Booth at the site !!>

<b>Exhibition of panels</b> Activities of groups involved in our daily life are introduced. There are handmade corner and health checkup corner, etc.	<b>Food selling corner</b> Dried fish, fresh vegetables, tea, Heda salt will be sold.
---	---

### Exhibition of Calligraphy and Posters: Enlightenment on Open and Fair Election

Inquiries: Election Committee Administration Office ☎ 055-934-4815

It is the display of excellent works of calligraphy and posters about the enlightenment of open and fair elections recruited from the children and students in the city.

When: Feb. 6(Fri)-12(Thu), 9:30-21:00

Where: City Library (Exhibition Hall)

### Chiiki Fureai (regional friendship) Concert

Inquiries: Cultural Promotion Division ☎ 055-934-4812

Ms. Mao Fujino plays *Kugo* (an ancient musical instrument) and the harp.

When: Feb. 7(Sat), 14:00- (Doors Open: 13:30)

Where: Shizuura Chiku Center

Capacity: about 100 people

\*Come to the place on the day.



## Events

### The 5th Numazu Ecological Contest

Under the slogan of aiming for creating Numazu as an ecological city, the 5th Numazu Ecological Activity Contest will be held. In the contest, a variety of ecological attempts in homes and communities will be presented.

Inquiries: Environmental Policy Division ☎ 055-934-4741



When: Feb. 8(Sun)

Where: Cultural Center (Small hall)

Free



◆Contest : 13:00 ~

Eight groups working for ecological issues will present their activities and results on the stage. An excellent one will be awarded.

<p><b>Eco One Election</b> : 10:00 ~</p> <p>Select Eco One Award from the exhibits of groups which can't present their activities on the stage.</p>	<p><b>Exhibition</b> : 10:00 ~</p> <p>Where: Exhibition room</p>
<p><b>Eco Battle</b> : 15:00 ~</p> <p>Numazu Professional Wrestling team will come and perform.</p>	

#### \* Eco Exhibition

Exhibition introducing companies and groups energy and natural resources saving efforts

#### \* Eco Experience

Dismantlement of computers, separating and sorting of garbage game and power generation race

#### \* Children's Painting Exhibition "Nature I love"

Paintings painted by children who go to preschools and nursery schools in Numazu city

## Child Raising

### Lecture for Child-Care Support

Inquiries: ①Numazu City *Dai-ichi Chiku* Social Welfare Council ☎ 055-963-5088

②Social Welfare Division ☎ 055-934-4824

When: Jan. 31 (Sat), 14:00-15:30

Where: *Dai-ichi Chiku* Center

Theme: Kind-hearted *Nya~go* and Warm-hearted *Tyrano*

Lecturer: Miyanishi Tatsuya san (Picture book author)

Capacity: 120 people (first-come first-served basis on the day)

## **Courses and Classes**

### **Growing-Vegetable Course for Beginners**

Applications & Inquiries: NPO *Hojin* (Incorporated Nonprofit Organization) IBA *Miraijuku*,  
Matsuda san ☎ 090-1291-4638 / FAX: 055-967-1309

Inquiries: Agriculture and Forestry Division ☎ 055-934-4751

When: Opening class = Feb. 8 (Sun), 10:00- (Regular classes are to be held on Saturdays until August. Work calendar will be handed out to the participants in the opening class.)

Where: IBA *Miraijuku WENDA* Farm for agricultural practice (*Ooka-nakaishida*)

\* Opening class will be held at *Dai-go Chiku* Center.

Contents: Lectures and practical work of growing vegetables

Capacity: Approximately 30 people / Fee: 4,000 yen / How to apply: By phone or Fax



### **Areal Courses for Lifelong Learning**

Inquiries: Lifelong Education Division ☎ 055-934-4870

The areal courses are to be held at each *Chiku* center with the theme of daily-life related topics.

	When	Where	Theme
①	Jan. 30 (Fri) 18:30- 20:00	<i>Dai-san Chiku</i> Center	Fitness with making use of hobbies ~as an example of Spinning Top in the air ( <i>Chonkake-goma</i> )~
②	Feb. 8 (Sun) 13:30- 15:00	<i>Dai-ichi Chiku</i> Center	It's wonderful going on with my life ~Everything becomes a source of laughter~
③	Feb. 11 (National Holiday) 10:00- 11:30	<i>Ooka Chiku</i> Center	In order not to suffer from cardiac illness
④	Feb. 18 (Wed) 19:00- 20:30	<i>Katahama Chiku</i> Center	Relief Operations in Natural Disasters

Lecturers: ①Takatsuki Yoshiteru san (Honorary Professor at Tokai University)

②Kataoka Ryota san (Performer of *Wadaiko* [Japanese drums] & Percussion)

③Medical Doctor Sakamoto Taizo (Director of Okamura Memorial Hospital)

④Office staff of Numazu City Crisis Management Division

Capacity: Approximately 100 persons for each course

※No need for applications. Please come to the center on the day.

### **Open Lecture for Citizens by Numazu City Hospital**

Inquiries: Medical Professions Division at Numazu City Hospital ☎ 055-924-5100

When: Jan. 31 (Sat), 13:30- 15:30

Where: City Library (Audio-Visual Hall)

Theme: ①Time has come when medicine can cure Hepatitis B and C

②Proper method for taking medicine ~Answers to common questions  
and concerns~

Lecturers: ①Medical Doctor Shinozaki Masayoshi (Assistant Director at Numazu City Hospital)

②Head Pharmacist at Numazu City Hospital

Capacity: Approximately 200 persons

※No need for applications. Please come to the hall on the day.



### **Print Class by Japan Print Association**

Applications & Inquiries: Cultural Promotion Division ☎ 055-934-4812

How about making picture postcards illustrated with copperplate engravings?

When: Feb. 14 (Sat), 13:30- 16:00

Where: Cultural Center (#5 Meeting Room)

Instructor: Wakatsuki Kohei san (Professor at Tohoku University of Art and Design)

Applicants: 5<sup>th</sup> graders at elementary school and over (Elementary school children should be accompanied by their parents or guardians.)

Capacity: 15 persons (in the order of applications)

What to bring: plastic gloves, apron

How to apply: By phone / after 9:00 on Jan. 26 (Mon)

※Please wear clothes which can get dirty.

### **Lecture Class for Nordic Walking**

Applications & Inquiries: Longevity Welfare Division ☎ 055-934-4835

In this class, participants can learn the way of stretching and walking with two poles.

When: Mar. 7 (Sat), 10:00- 11:30

Where: San-Well Numazu (Multipurpose Hall)

Applicants: Residents of Numazu city aged 65 and over who have never participated in this lecture class for this fiscal year and have no limitation of physical activity by doctors.  
(Excluding people who have nursing-care insurance)

Capacity: 50 persons (in the order of applications)

Fee: 50 yen (insurance premium)

How to apply: By phone / after 9:00 on Jan. 26 (Mon)

## **Events**

### **Lecture on History**

Contact: Cultural Promotion Division ☎ 055-964-2350

When: Jan. 31(Sat), 13:30-15:30

Where: Heda Library (Audio-visual room)

Theme: Skill and wisdom of living: the publication of Heda village's history, folk edition

Lecturer: Mr. Yoshiharu Kamino (the professor of Musashino Art University)

Capacity: 100 people (first-come first-served basis)

### **A Meeting to see Moon and Jupiter and Winter Constellation**

Inquiries: *SHONEN SHIZEN NO IE* ☎ 055-922-1746

When: Feb. 28(Sat), 18:00-20:00 (In case of rain, a constellation class will be carried out.)

Where: *SHONEN SHIZEN NO IE*

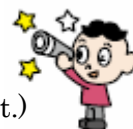
Applicants: anyone (If attendants are junior high school students or under, they need guardians.)

Capacity: 40 people (first-come first-served basis)

Fee: 100 yen (for insurance)

Things to bring: clothes against cold, gloves, writing materials, a flashlight, a digital camera and a pair of binoculars (if you have these last two)

How to apply: by phone at 9:30 on Jan. 27(Tue) (It is closed on Monday.)







### Valentine Concert

Applications and inquiries: San-Well Numazu ☎ 055-922-2020

Contact: Social Welfare Division ☎ 055-934-4824

When: Feb. 8(Sun), 14:00

Where: San-Well Numazu (Multipurpose Hall)

Musician: Hibiki Chamber Orchestra

Capacity: about 200 people

How to apply: by phone by Feb. 7(Sat)

### New Year Events at Senbon Plaza

Applications & Inquiries: Senbon Plaza ☎ 055-962-3313

Longevity Care Division ☎ 055-934-4834

- ***Setsubun***: Storytelling & scattering parched beans to drive out bad luck

When: Feb. 1(Sun), 10:00-10:30

Where: Multipurpose hall

\*Free gifts will be given to the first 100 persons.

- **The picture-story show by *Gucci Mitsuzawa***

When: Feb. 1(Sun), 10:30-11:00 / Where: Multipurpose hall

- ***Kimekomi Temari*** (handicraft making 2 balls with cloth)

When: Feb. 1(Sun), 13:30-15:30 (Reception: 13:00-)

Where: Multipurpose hall

Fee: 500 yen (for material)

Capacity: 30 people (first come first served basis)

How to apply: By phone from Jan. 22 (Thu), 10:00-

- **Exhibition of hanging decorations with wishes**

When: Feb. 16 (Mon)-21(Sat), 10:00-16:00 / Where: Free Space

\*Please contact us if you can lend hangings or mobiles during the exhibition.



### Numazu Sweets Run



Applications & Inquiries: Numazu Running & Skills Station

☎ 055-952-3222

Inquiries: Commerce & Industry Promotion Division

☎ 055-934-4748

Let's run enjoying 15 kinds of high quality sweets.

When: Feb. 22 (Sun) 10:00-12:00

(In case of bad weather, it will be cancelled.)

Where to gather: Central Park

Course: Central Park ~ *Minato-Ohashi* Bridge ~ The stepped bank of *Kano*

River (in front of Riverside Hotel) About 2.5 kilometers per round There are stairs in the course.

Check the city homepage: <http://n-sta.com/>

Capacity: About 1,000 people

Fee: adults (people aged 6 & older)= 3,000 yen / younger than 6= 2,500 yen

Deposit the money into our account beforehand

Applications: Come to us directly or apply on the homepage till Jan. 23(Fri).

### **Fuji Pharma Valley Forum 2015**

It is for people working for industries, academic facilities, public offices & banks around Mt. Fuji.

Applications & Inquiries: *Pharma-valley* Center, Planning Division ☎ 055-980-6333

Inquiries: Commerce & Industry Promotion Division ☎ 055-934-4744

When: Feb. 3 (Tue), 10:30-18:30

Where: Plaza Verde (Convention Hall A)

Contents: Products and panels are displayed, Lectures & exchanging information

Application deadline: Jan. 26 (Mon)

Check the homepage for more information: <http://www.fuji-pvc.jp/>



### **Information**

#### **Tax Reports for Municipal & Prefectural Tax**

Inquires: Municipal Tax Division ☎ 055-934-4735

We receive tax reports for municipal and prefectural taxes for fiscal 2015. Please come to one of the places below. If you hand in final income tax return, you don't need this report.

When	Where	Opening Time
Jan. 27(Tue)	<i>Ooka Chiku</i> Center	9:30- 12:00 13:00- 16:00
	<i>Ohira Chiku</i> Center	
Jan. 28(Wed)	<i>Ooka Chiku</i> Center	
	<i>Shizuura Chiku</i> Center	
Jan. 29(Thu), 30(Fri)	<i>Ashitaka Chiku</i> Center	* <i>Heda Area</i> Center 10:00- 12:00 13:00- 15:00
Feb. 2(Mon)	<i>Heda Area</i> Center	
Feb. 3(Tue)	<i>Katahama Chiku</i> Center	
Feb. 4(Wed)	<i>Hara Chiku</i> Center	
Feb. 5(Thu)	<i>Ukishima Chiku</i> Center	*Cultural Center 9:00- 12:00 13:00- 17:00
	<i>Nishiura Chiku</i> Center	
Feb. 6(Fri)	<i>Hara Chiku</i> Center	
	<i>Uchiura Chiku</i> Center	
Feb. 10(Tue), 13(Fri)	<i>Kanaoka Chiku</i> Center	Except weekends, Mar. 9(Mon) & Mar. 16(Mon)
Feb. 17(Tue)-Mar. 17(Tue)	Cultural Center (Exhibition Room)	

#### **Feb. 2(Mon) is the Due Date of the Payment for Municipal & Prefectural Tax and National Health Insurance**

Inquiries: Tax Collection Division ☎ 055-934-4730

National Health Insurance Division ☎ 055-934-4727

Please be sure to pay the fees.

**Payment on Sunday is available as follows.**

When: Jan. 25 (Sun), 9:00-15:00

Where: Tax Collection Division (City Hall 2F), National Insurance Division (City hall 1F)

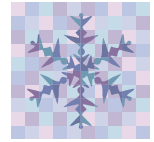


### **Night Acceptance and Consultation of Water Bill Payment**

Inquiries: Water and Sewage Service Division ☎ 055-934-4853

Where: Feb. 3 (Tue), 17:15- 20:00

Where: Water and Sewage Service Division (Water Utility Department Building, 1F)



### **“Measures against Cold” for Water Pipes**

Inquiries: Water and Sewage Service Division ☎ 055-934-4856

We are going to have the season when it is easier for water pipes to freeze up. If a water pipe freezes up, it can break or stop water from running. So, bare pipes should be covered with some cloth or a blanket, which can hold warmth. You can buy lagging materials at stores, but a disused blanket will do enough. Also a pipe in the meter box should be prevented from freezing by stuffing some cloth in the box.

### **Automatic Machines for Issuing Registration Certificates Will Be out of Service**

Inquiries: Resident Registration Division ☎ 055-934-4720

All automatic machines for issuing registration certificates in City Library, Takashima-cho branch office of Numazu Shinkin Bank, e-rade and City Hall will be out of service all day for power outage in City Hall.

When: Feb. 7 (Sat)

### **Senbon Plaza: The Bathroom is out of Service after April 1**

Inquiries: Senbon Plaza ☎ 055-962-3313

Longevity Welfare Division ☎ 055-934-4834

The bathroom in Senbon Plaza will be out of service after April 1 because of antiquated equipment.

### **Free Events**

#### **Numazu Corporate Body Association New Year Lecture Meeting**

Applications & Inquiries: Numazu Corporate Body Association (Public Utility Corporation)

☎ 055-922-4014

Ms. Noriko Hama (professor of graduate school of *Doshisha* University) is to give a lecture.

When: Feb. 5 (Thu), 15:30- 17:00

Where: Plaza Verde (Convention Hall B)

Theme: What will become of the global economy and Japan?

How to apply: By phone

#### **The 22<sup>nd</sup> Convention for Mothers in Numazu**

Inquiries: Fujii san, Executive Committee of Convention for Mothers in Numazu ☎ 055-922-7012

When: Feb. 7 (Sat), 13:30- 15:30

Where: Plaza Verde (Meeting Room 408 • 409)

Contents: “How will TPP be decided?” “*Shaberiba* (Chatting Room); Raising children is so hard!”

※No need for applications. Please come to the place directly on that day.

## **Welfare-Related Job Fair**

Inquiries: Shizuoka (Pref.) Social Welfare Human Resource Center ☎ 054-271-2110

When: Jan. 31 (Sat), 13:00- 16:00

Where: Plaza Verde (Convention Hall B)

Contents: Information on job offers in the field of welfare, consultations for job interview, etc.

Applicants: Those who want to have a welfare-related job

※No need for applications. Please come to the place directly on that day.

### **Exhibitions in Mon Musee Numazu in January and February**

“Exhibition of Japan Hanga Association”

Jan. 31(Sat) – Feb. 23(Mon) 10:00-17:00 (Entrance: ~16:30 and ~16:00 on Feb. 23)

\*It'll be closed from Jan. 26(Mon) to Jan. 30(Fri) and on Feb. 13(Fri) to change exhibitions.

### **Exhibitions in Senbon Plaza Mini Gallery in January**

“Exhibition of New Year's cards”: Jan. 21(Wed) – 31(Sat)

## **Information from the Health Center**



Applications and inquiries: Health Promotion Division (Health Center)

☎ 055-951-3480

### **Consultations on Stress**

Insomnia or lack of appetite in your daily life may be caused by stress. A licensed psychiatric social worker or a clinical psychologist will give you some advice about your worries.

When: Feb. 4(Wed), Mar. 4(Wed) 13:30-16:30 (about an hour per person)

Where: *Hoken Shido Shitsu* (Health Guidance Room) in Health Center 1F

Applicants: People who are worrying about psychological condition over 18 years old (not outpatients) and their family

Capacity: 3 people a day (first-come first-served basis)

How to apply: By phone from 8:30 on Jan. 22(Thu)



### **Lecture about How to Live a Kidney Friendly Life**

When: Feb. 28(Sat) 13:30-15:00 / Where: City Library (Audio Room)

Contents: Kidney Disease progressing without any symptoms and lifestyle in order to prevent the disease

Lecturer: Dr. Takashi Okada and a nutritionist in Health Promotion Division

Capacity: 200 people (first-come first-served basis)

How to apply: By phone from 8:30 on Jan. 22(Thu)

### Workshops by Acupuncture and Moxibustion Massagers

Acupuncture and moxibustion massagers will show you how to improve symptoms you feel uneasy about through acupuncture and moxibustion.

Where: *Hoken Shido Shitsu* (Health Guidance Room) in Health Center 1F

Applicants: People living in or commuting to Numazu City

How to apply: By phone from 9:00 on Jan. 23(Fri)

	Name of the workshop	Date and time	Capacity
①	Pair massage exercises for improving lower-back pain and stiff shoulder	Feb. 6(Fri) 10:00-11:30	15 pairs
②	Stretching exercises for improving cold & swelling	Feb. 6(Fri) 13:30- 15:20	30 people

### Why don't you get a thorough health check?

On the basis of the result of the measurement, advice about your lifestyle, diet or health will be given.

When: 9:00-16:15 during weekdays (about 30 minutes per person)

Where: Health Center

Contents ①the measurement of bone density ②the measurement of body composition  
③consultation about quitting smoking

Applicants: People over 20 years of age living in Numazu City

①People who have not measured within a year ②People who have not measured within a half year(except those who have a pacemaker) ③smokers

Things to bring: Health handbook (if you have)

How to apply: By phone

### 8020 Healthy Teeth Project Shizuoka Prefectural Meeting in Numazu

The slogan of 8020 healthy teeth project is 'Let's enjoy eating keeping 20 teeth even if we are over 80 years old.'

When: Feb. 8(Sun) 13:00-16:00

Where: Plaza Verde (Convention Hall B)

Contents: A report on 8020 project's activities,

Memorial lecture by Mr. *Jitsukawa Kinshin*(climber) "Mt. Fuji. I look up to it as a lifelong teacher"

Please come to the site directly on the day.

### Explanation Meeting for Recruiting Volunteers in Shizuoka Cancer Center

Shizuoka Cancer Center is looking for volunteers who can cooperate to make the hospital clean and beautiful and holds an explanation meeting as follows.

When: Feb. 7(Sat), 10:00-12:00 / Where: Shizuoka Cancer Center

Capacity: 50 persons

How to apply: Write postal code, address, age and phone number on the postcard and send it to the address below. The letter about how to participate in the volunteer work will be sent to the applicants after receiving the postcard.

Applications and inquiries: Shizuoka Prefectural Cancer Center ☎ 055-989-5743

address: 1007 *Shimonagakubo, Nagaizumi-cho* 〒411-8777



## Media Service



The latest news and information about events and civic information is being conveyed through various media services.

Inquiries: Public Relations Division ☎ 055-934-4703



\***Facebook**: “Numazu Topics!” <http://www.facebook.com/numazucity>



\***Mail Magazine**: “Mel Numa!” Events held in this city and everyday information will be sent on the 1<sup>st</sup> and 15<sup>th</sup> every month through Mail Magazine. Please register it.  
<http://www.city.numazu.shizuoka.jp/mailmaga/index.htm>



\***YouTube**: “numazu.tv” You can see moving pictures taken in the city.  
<http://www.youtube.com/user/numazucity>



\***FM radio** [COAST-FM 76.7MHz]  
Talk with Mayor “Numazu *Otakara Hakken*” (Discover treasure troves in the city.)  
on Thursday: 18:15-18:45 \*You can hear Events information.



\***CATV**: TOKAI cable network “*Numazu Kohoshitsu*” (digital broadcasting)  
121ch Mon. – Fri. 7:50-, 18:50-  
122ch Mon. – Fri. 11:35-, 21:35-

Registration of  
‘*Mel Numa*’:  
Numazu city mail magazine

Sending Numazu Topics  
via  
**YouTube & facebook**

