

# Numazu Newsletter

No. 308  
August 1, 2015  
Voluntary Supporters

<http://www.city.numazu.shizuoka.jp/>

Kalamazoo Division NICE

You can get information about Numazu twice a month on this home page and some hard copies issued by Supportive Volunteers at the Tourist Information Office at the Numazu Station, Palette, the City Library Participation, the City Gymnasium, Speakeasy, the Tap Room, Catholic Church, Kato Gakuen, Chiku Centers and the City Hall.

## Events

### Holding a Peace Film and a Reading Drama

Inquiries: General Affairs Division

☎ 055-934-4712

When: Aug. 23(Sun)

Where: 4th floor on the City Library ①- Audio visual Room, ② - No.1,2 lecture room

Contents: ①a film, "Hitotsu no Hana" and "On a Paper Crane". 1st time from 10:30 to 11:40, 2nd time from 14:40 to 15:50 ②the reading drama by Sayuragi that hands down telling the writings and poems of the atomic bomb experience, from 13:30 to 14:30

Capacity: 200 people each (first come first served basis on the day)

\*Panel exhibition, "Atomic bomb and human beings", is held on the 4th floor of the city library from Aug. 19(Wed) to 23(Sun).



### Exhibition: The Seventieth Anniversary of the End of the War

\*Numazu City Archives of Meiji History ☎ 055-923-3335

"The Citizens and War in Showa period" When: ~Aug. 30(Sun)

\*Serizawa Kojiro Memorial Museum ☎ 055-932-0255

"Kojiro and War" When: ~ Nov. 1(Sun)

※Please make a contact for information about times of opening and admission fees.

### Ceremony to Pay Respect to War Dead and Pray for Peace

Numazu City will hold a Ceremony to console the souls of those who were lost as well as pray for the

realization of everlasting world peace.

Inquiries: Social Welfare Division ☎ 055-934-4824

When: Aug. 15(Sat) 11:50~ / Where: Cultural Center Main Hall

※ The event sponsored by the war bereaved family members will be held at 10:45.

### **Let us unite in prayer for peace**

Inquiries: General Affairs Division ☎ 055-934-4712

○Hiroshima Peace Memorial Day: Aug. 6(Thu) 8:15 (the time of atomic bombing)

○Nagasaki Peace Day: Aug. 9(Sun) 11:02 (the time of atomic bombing)

○Anniversary Commemorating the End of War: Aug. 15(Sat) 12:00

## **Events**

### **Exhibition of 100 Calligraphic Works and Paintings by a Zen Priest *Hakuin***



Inquiries: Numazu Heritage Promotion Division ☎055-934-4879

It is said that there are two treasures in Suruga, Mt. Fuji and *Hakuin* in Hara. You will enjoy a variety of his works.

In the middle of Edo period, *Hakuin* drew a lot of paintings in Hara so as to propagate *Rinzaishu*, one of Zen schools, and its doctrine. This exhibition displays 100 pieces and it is one of the major exhibitions in Japan.

When: Sep.18 (Fri) ~ 27 (Sun), 10:00~16:30 (Admission is until 16:00.)

Where: Plaza Velde *Shimin* Gallery

Admission fee: 500 yen (free for high school students and younger)

\*Some of the works will be changed during the exhibition.

### **The 2<sup>nd</sup> *Hakuin Juku* Forum**

When: Sep. 23 (Holiday) 13:00~15:00

Where: Plaza Velde Convention Hall B

Lectures: “The world of *Hakuin*”, “Interpretation of pieces at this exhibition”

Lecturer: Mr. Katsuhiro Yoshizawa, former professor at International Research institute for Zen Buddhism Hanazono University

Capacity: 400 people

Fees: 2,000 yen (Members of *Suruga Hakuin Juku* are free of charge.)

How to apply: by phone or e-mail from Aug.10 (Mon)

Applications & inquiries: Suruga Hakuin Juku Bureau ☎ 055-925-0512 e-mail: [hakuinjuku@hakuin.jp](mailto:hakuinjuku@hakuin.jp)



## **Information from City Hall**



## **“Numazu City Plays Matchmaker”**

### **Numazu City Supports People to Have Wonderful Encounters through Various Events.**

Application s and Inquiries: Policy Planning Division, ☎ 055-934-4704

#### **◇Stroll Tour around the Numazu Port**

Ms. Mayo Minami known as K-mix radio personality, will join this tour as master of ceremony. Let's enjoy a pleasant stroll and tasty seafood around Numazu Port to deepen the relationship.

When: Aug. 30 (Sun), 9:30 ~ 15:00

Applicants: single man and woman aged from 20 to 39, living in or commuting to Numazu

Capacity: 25 men and women respectively (In case of a lot of applicants, there will be a drawing.)

Fee: 1,000 yen for men, 500 yen for women / Application Period: Aug. 8 (Sat) ~ 20 (Thu)

#### **◇Clean up Senbon Beach and Create Beach Stone Art with Geoglyph Artist Izumi Sakata**

You will get to know each other through the activities.

When: Sep. 12 (Sat), 13:00 ~ 17:30

Applicants: single man and woman aged from 20 to 39, living in or commuting to Numazu

Capacity: 15 men and women respectively (In case of a lot of applicants, there will be a drawing.)

Fee: free / Application Period: Aug. 8 (Sat) ~ Sep 3 (Thu)

#### **◇Mandarin Orange Picking, a Stroll in Mt. Kanuki and BBQ**

When: Oct. 25 (Sun), 9:00 ~ 18:00

Applicants: single man and woman aged from 25 to 44

Capacity: 25 men and women respectively (In case of a lot of applicants, there will be a drawing.)

Fee: 2,000 yen for men, 1,000 yen for women / Application Period: Aug. 31 (Mon) ~ Oct. 15 (Thu)



#### **◇Suruga Bay Attractive Experience Tour & Seafood BBQ**

Cleaning fish experience at Lalala Sun Beach and enjoy BBQ seafood

When: Sep. 26 (Sat), 9:00 ~ 16:30

Applicants: single man and woman aged from 25 to 44, living in or commuting to Numazu

Capacity: 25 men and women respectively (In case of a lot of applicants, there will be a drawing.)

Fee: 2,000 yen for men, 1,000 yen for women / Application Period: Aug. 8 (Sat) ~ Sep. 17 (Thu)

#### **※For all of the events above**

How to apply: by online application form on the website: <http://numakon.jp>

#### **We Support Your Kon-katsu (Activity of Searching for marriage)**

“Numazu no Deai Oen-ka” (Match making Support Division) supports people who want to get married to have wonderful encounters. We provide various match-making information through the internet. Why don't you register for the e-mail newsletter?



## Childcare



We'll support the growth of your children in Numazu and give you some information on child-raising. Please make use of it and enjoy yourself with your children!



### Let's enjoy "Ohisama Hiroba"!

Inquiries: *Poppo (NUMAZUKKO FUREAI CENTER)*: Child-Rearing Support Institution)

☎ 055-952-8077

When: Aug. 24 (Mon), 10:30 ~ 12:00 / Where: *Ishibashi Plaza* 4F (Hall) (Takashima-honcho)

Contents: Nursery nurses will show you how to play a hand game and other ways to enjoy children's play.

Applicants: small children and their parents / \*Please come to the site on the day.



### You need to make a notification of current condition (*Genkyo Tdoke*)

The required documents will be notified to those who will meet the requirements.

- ① Special Child-Rearing Allowance, Child with a Disability Welfare Subsidy, Mentally and Physically Handicapped Child Community-based Service Allowance

Inquiries: Handicapped Person's Welfare Division ☎ 055-934-4829 FAX: 055-934-2631

When: Aug. 10 (Mon) ~ 14 (Fri)

Where: City Hall (Annex, Handicapped Person's Welfare Division)

- ② Child-Rearing Allowance

Inquiries: Child-Rearing Family Welfare Division ☎ 055-934-4827

When: Aug. 10 (Mon) ~ 14 (Fri)

Where: City Hall (1F, Child-Rearing Family Welfare Division)



### Cooking Class with your children

Inquiries: Health Promotion Division (in Health Center) ☎ 055-951-3480

When: Aug. 20 (Thu), 10:00 ~ 12:00 / Where: Health Center (kitchen)

Applicants: Kids between 18 months old and 3 years old, and their parents, who live in Numazu

Capacity: about 20 pairs / Fee: 200 yen (for ingredients)

What to bring: your *Boshi Kento Techo*, apron, scarf, towel for cleaning hands, spoon and fork for your kid, rice balls which will be good with a fish dish

How to apply: by phone



### You'll get some advice on raising children

Inquiries: Child-Rearing Family Welfare Division ☎ 055-934-4828

We often have several troubles and worries while raising children. Why don't you call us and ask for some advice?



### **Nature Observation Class in *Awashima***

Application & inquiries: Numazu City *Silver Jinzai* Canter ☎ 055-964-1153

Inquiries: Longevity Welfare Division ☎ 055-934-4834

When: Aug. 20(Thu) 9:00 ~ 15:10 / Where: *Awashima* Marine Park

Applicants: 3<sup>rd</sup>, 4<sup>th</sup>, 5<sup>th</sup>, 6<sup>th</sup> graders of elementary school

Capacity: 40 students (In order of arrival) /

Participation Fee: 750 yen (for entrance fee and others)

Things to bring: Lunch, drinks, towel, cap or hat, rain gear and writing implements

How to apply: Aug. 10 (Mon) 9:00~ by phone

## **Events**

### **“Koukousei Shaberiba” in Numazu**

Inquiries: Lifelong Education Division ☎ 055-934-4871

“Koukousei Shaberiba” is the event that High school students exchange opinions with each other about Numazu City. They are going to discuss what is important to make an “attractive community.” Why don’t you listen to their fresh voice?

When: Aug. 23(Sun) 13:00 ~ 15:00 / Where: Numazu Cultural Center Meeting Room

Capacity: about 70 people / Theme: “How to introduce Numazu?”

※ Seats are provided for the public. Please come to the site directly.

### **The 24<sup>th</sup> Numazu City Welfare Meeting**

Inquiries: Numazu Social Welfare Council ☎ 055-922-1500

Inquiries: Social Welfare Division ☎ 055-934-4824

When: Aug. 26(Wed) 13:00 ~ / Where: Numazu Cultural Center

Contents: Commemorative Speech “ 5 Seconds before We Make a Change to Society  
~ the things which each person can ~ ”

Lecturer: Kataoka Ryota san (percussionist)

※ A sign language interpreter will come. / ※ Please come to the site directly.

### **Every Little Thing Concert**

Inquiries: Numazu Cultural Center ☎ 055-932-6111

Inquiries: Cultural Promotion Division ☎ 055-934-4812

When: Oct. 31(Sat) The concert starts at 18:00.

Where: Numazu Cultural Center / Admission fee: 7,300 yen (All seats are reserved.)

※ Free for children under 3 years old and if they want seats for themselves, they need to buy a ticket. Children under 3 years old can watch a concert on their parent’s knees.

How to get a ticket: Aug. 15(Sat) ~ Tickets will be sold at Numazu Cultural Center Ticket Department and ticket agencies.

## **The 7<sup>th</sup> Brass Band Festival in Numazu**

Applications & inquiries: Numazu Cultural Center ☎ 055-932-6111

Inquiries: Cultural Promotion Division ☎ 055-934-4812

When: Nov. 14(Sat) 15:00~ / Where: Numazu Cultural Center, Big Hall

Admission fee: 2,000 yen, 1,000 yen for a high school student and younger (All seats are reserved.)

How to get a ticket: Aug. 14(Fri) ~ Tickets will be sold at Numazu Cultural Center Ticket

Department and ticket agencies

Performance: Yamaha Brass Band



### **♪ Recruitment of participants for a workshop on performance for each musical instrument ♪**

Why don't you receive guidance on technique of performance and play with the professionals

on the final stage of this Brass Band Festival.

When: Nov. 14(Sat), 9:30 ~ 11:00

Where: Numazu Cultural Center / Performance Number: Takarajima (Treasure Island)

Instructors: Members of Academic Wind Orchestra Hamamatsu

Applicants: Junior high school students or older / How to apply: by phone by Sep. 30(Wed)

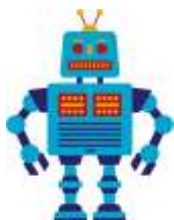
\*Please ask about details such as kinds of music instruments or the number of applicants.

(In case of a lot of applicants, there will be a drawing.)

\*The fee for the session is free, but you should get a ticket for the concert.



## **The Robot Contest between National Colleges of Technology from Across Japan 2015 Tokai Hokuriku Regional Contest**



Applications & inquiries: Numazu College of Technology Student Affairs Section

☎055-926-5734, 3600 Ooka 〒410-8501

Inquiries: Commerce and Industry Promotion Division ☎055-934-4799

When: Oct. 4(Sun) 12:30 ~ / Where: Plaza Verde Multi-purpose Hall

Capacity: 270 people (In case of a lot of applicants, there will be a drawing.)

How to apply: Write your address, name, phone number and the number of people who want to watch the contest on ofuku hagaki (reply postal card).

Application period: by Sep. 4(Fri)

※3 people can apply on each postcard.

※Admission ticket will be sent back with reply postal card in the middle of September.

## **Fujisan Kodomo no Kuni "Numazu Fair"**

You can enjoy photographic exhibition of deep-sea fish, book market and Numazu specialties which are sold.

Inquiries: Fujisan Kodomo no Kuni ☎0545-22-5553

Inquiries: Tourism and Exchange Division ☎055-934-4747

When: until Aug. 16(Sun) (9:00 ~ 17:00) / Where: Fujisan Kodomo no Kuni (Fujishi Kazaki)

※ During the Numazu fair, people who live in Numazu are admitted free.

(Please show your present address at the entrance.)

※ Please visit the website for the detail. Website: <http://www.kodomo.or.jp/>

### **Facility Tour of Kano River Western Clean Center on the Prefectural Citizen's Day**

Applications and inquiries: Kano River Western Clean Center ☎ 055-968-2623

Inquiries: Water and Sewage Service General Affairs Division ☎ 055-934-4862

When: ① 9:30 to 11:30 on Aug. 21(Fri) ② 13:30 to 15:30 on Aug. 21(Fri)

Where: Kano River Western Clean Center(in Hara)

How to apply: by phone till Aug. 20(Thu)

## **Recruitment**

### **Looking for Municipal Housing Tenants**

Applications and inquiries: Public Housing Repair and Maintenance Division ☎ 055-934-4792

Name of danchi & quantities: Ishida-danchi (1), Jiyugakoka-danchi(3), Kobayashi-danchi(1), Nakao-danchi(3), Ohkubo-danchi(4), Matsubara-danchi(2), Haratorisawa-jutaku(3), Hara-danchi(7), Haramachi Naka-danchi(2), Imazawa-danchi(1), Nishiide-danchi(1), Uematsu Y corpoo (1), Tiara Mansion(1), Sunny Side Ohtuska (1)

\*Housing parking lots are limited.

Qualifications: people who meet all of the following requirements.

① You have or will have relatives to live together(Jiyugaoka-danchi, Kobayashi-danchi, and Ohkubo-danchi, (1), Hara - danchi(4), Imazawa-danchi ,Nishiide-danchi and Sunny Side Ohtsuka, single person born before Apr. 1, 1956 can apply.)

② Your income meets the income criteria prescribed in the municipal regulations.

③ You live in the city or commute to it.

④ You are in need of housing.

⑤ You are not a gangster.(people who live together are not either.)

Application period: 8:30 to 17:00 from Aug. 12(Wed) to 14(Fri)

The date of drawing: from 13:30 on Aug. 26 (Wed).

\*In case of lots of applicants, there will be a public drawing. If this is the first time for you to apply for it, come to Public Housing Repair and Maintenance Division on the 6<sup>th</sup> floor of the city hall before the application period. Contact us or see the city home page about the details.

### **Temporary Lecturers and Part Time Teachers of Elementary and Junior High Schools**

Applications and inquiries: School Education Division ☎ 055-934-4809

The registration is available at any time.

Qualifications: primary or junior high school teacher's license holders

\*please contact us about the details.

### **Looking for Volunteers Attending JTB Earth Ikiiki Project in Ida Area**

Applications and Inquiries: JTB Chubu, Numazu Branch ☎ 055-963-2868

Inquiries: Tourism and Exchange Division ☎ 055-934-4747

Experience the charm of Ida area, beautiful Japanese village, through farm work.

When: 8:15 to 16:00 on Sep. 6(Sun)

Contents: gathering at the North Exit of JR Numazu station ~ tour of the glittering hill, Sunko ancient tomb ~ experience planting Nanohana & picking tangerine fruit~ bathing in hot spring( transfer by bus, with lunch)

Capacity: 30 people (first come first served basis) / Things to bring: clothes and towels

How to apply: by phone from 10:00 on Aug. 10(Mon)

\*participate in clothes that you can do farm work.



### **Classes, Lectures**

#### **Lecture on Life Saving**

Applications and inquiries: Emergency Work Station ☎ 055-921-9999

When: ① Normal life saving lecture from 9:00 to 12:00 on Aug. 16 (Sun) ② Upper lifesaving lecture from 9:00 to 17:00 on Sep. 20(Sun)

Where: Emergency Work Station ( in the Municipal Hospital premise)

Contents: cardiopulmonary resuscitation using ADE( ① for adults, ② including infants), how to stop bleeding

Applicants: Junior high school students and older who live in the city or commute to or go to school.

Capacity: about 30 people, each

How to apply: ① by phone till Aug. 13(Thu) ② by phone till Sep. 17(Thu)

#### **Ancient Documents Reading - Introductory Course**

Applications and inquiries; Meiji Historical Museum ☎ 055-923-3335

When: 9:30 to 11:30, starting from Sep. 5 to Oct. 3, every Saturday, 5 times in total

Where: lecture room, on the 2<sup>nd</sup> floor of Meiji Historical Museum

Contents: learn how to read ancient documents using local historical materials as texts.

Applicants: people who read ancient documents for the first time.

Capacity: 30 people (first come first served basis)

Things to bring: writing materials, dictionaries (the dictionary of Kuzushiji if you have)

Dead line: by phone or coming to the museum from 9:00 on Aug. 8(Sat.)

### **“Life Seminar” the second**

Applications & Inquiries: Public Relations Division (Citizens Consultation Center) ☎055-934-4841

When: Aug. 26(Wed), 10:00~11:30 / Where: Civic Cultural Center, Large meeting room

Theme: Talk about food labeling and prevention of food poisoning

Lecturer: a staff of the health center in the east area of Shizuoka pref.

Capacity: 90 persons (first come, first served basis)

How to apply: by phone or HP application form from Aug. 10(Mon)

### **Memorial Lectures for Nagahama Castle Ruins Opening**

The lectures will be held in Aug., Sep. and Oct. The 3 lectures will be held in series. The first lecture is about the design of *Nagahama* castle.

Inquiries: Culture Promotion Division(Cultural Treasure Center) ☎055-952-0844

Tourism & Exchange Division ☎055-934-4843

When: Aug.22 (Sat), 13:30~16:30(opening is 13:00)

Where: City Library, audio-visual room

Lecturer: Castle history by Chida Yoshihiro (the president of Nara University)

Architectural history by Fumoto Kazuyoshi (a professor of Nagoya Industrial University)

Capacity: 200 persons (First come, first served basis on the day)

### **Experience Cardboard Compost ~ Numazu Environment Citizen's College~**

Inquiries: Garbage Control Division, ☎055-934-4743

The participants will make cardboard compost and report its condition and what you think about it after 3 months.

When: Sep. 7(Mon) for making compost. Dec. 7(Mon) for report. 13:30~15:30(for both days)

Where: City Hall, 801 meeting room

Applicants: living in or commuting to Numazu who are interested in reducing garbage and making compost. Also people who can attend both days.

Capacity: 30 persons (first come, first served basis)

How to apply: by phone from Aug. 12(Wed), 8:30~

### **Nordic Walking Class**

Applications and Inquiries: Longevity Welfare Division, ☎055-934-4835

We will practice stretching exercise using poles and walking form with basic course and practical course. (Free poles are available.)

	Where	When	Content	Capacity
1	Imazawa Chiku Center (meeting room)	Sep. 11(Fri),10:00~11:30	Basic	20
		Oct. 2(Fri), 10:00~11:30	Practical	
2	San-well Numazu (multi-purpose hall)	Sep. 11(Fri), 14:30~16:00	Basic	50
		Oct. 2(Fri), 14:30~16:00	Practical	

Applicants: Over 65 year-old people living in Numazu. Not covered by the nursing-care insurance.  
Applicants have to attend all the classes. One person for 1 place. Except persons prohibited exercise by a doctor.

How to apply: by phone from Aug. 10(Mon), 9:00 (First come, first served basis)

### **Seminar for Developing Women Leaders**

Applications & Inquiries: Shizuoka pref. Economy and Industry Division, Labor policy section

☎054-221-2817 Fax 054-271-1979

Inquiries: Commerce & Industry Promotion Division ☎055-934-4749

	Applicants	When	Contents
1	Candidate of woman leader	Oct. 21(Wed), 9:45~17:00	learn the skill needed for leaders
2	Boss who has woman subordinate	Oct. 13(Tue), 9:45~17:00	get the know-how for development of women subordinates

Where: Chamber of commerce and industry (*Yoneyama-cho*)

Capacity: about 30 persons for each course / Fee: 2,000 yen for each course

How to apply: by phone, fax or e-mail ([roufuku@pref.shizuoka.lg.jp](mailto:roufuku@pref.shizuoka.lg.jp))

### **Information from City Hall**

#### **Confirm Your Address on Your Certificate of Residence**

Inquiries: Resident Registration Division ☎055-934-4721

The notice card written your 'my number' will be sent to the address of your certificate of residence from October following 'my number system' will be enforced. Please be sure to confirm your address to accept the notice card. If your present address is wrong or there is an omission of your room number in an apartment house, please do procedure to correct your address at the resident registration division on 1<sup>st</sup> floor of city hall or each civic service windows.

#### **August 31(Mon) is the due date for Municipal and Prefectural Tax and National Health Insurance(2<sup>nd</sup> term)**

Inquiries: Tax Collection Division, ☎055-934-4730

National Health Insurance Division ☎055-934-4727

Please make sure to pay the taxes before the due date. You can also pay at night or on Sunday as follows.

Night Service: Municipal tax – August 25(Tue), 17:15 – 20:00

National Health Insurance – August 25(Tue), 18:15 – 20:00

Weekend Service: August 30(Sun), 9:00 – 15:00

Where: Tax Collection Division = City Hall 2F / National Health Insurance Division = City Hall 1F,

### **Night Consultation for Water Bill Payment**

Inquiries: Water and Sewage Service Division ☎ 055-934-4853

When: August 25 (Tue), 17:15 ~20:00

Where: Water and Sewage Service Division (Water Service Department Building 1F)

### **Wall Painting “*Izumi*”by Shinoda Toko Opens to the Public**

Inquiries: Asset Utilization Division ☎ 055-934-4714

When: August 13(Thu) – 16(Sun), 8:30 – 17:15 / Where: City Hall 4F, Special drawing room

Please go to the front counter at City Hall on the day

### ***Fukujiji*(American Lung Association) Seal Fund-raising Campaign**

Inquiries: Health Promotion Division ☎ 055-951-3480

We ask to raise funds through community association and anti-tuberculosis woman's association, along with anti-tuberculosis campaign of *fukujiji* seal. Please cooperate with us.

### **Bokusui Memorial Museum will be Closed**

Inquiries: Bokusui Memorial Museum ☎ 055-962-0424

Cultural Promotion Division ☎ 055-934-4812

When: August 23(Sun)

### **August is “Douro Fureai ” Month, and August 10<sup>th</sup> is “Michi no Hi” (Roads Day)**

Inquiries: Road Maintenance Division ☎ 055-934-4788

Standing signboards, goods and abandoned bicycles on the roads may not only cause traffic jams or car accidents but also obstruct an emergency vehicle. Let's improve the road environment.

### **Retail Marketing Secondary license Examination**

Application and Inquiries : Numazu Chamber of Commerce and Industry ☎055-921-1000

Inquiries: Commerce and Industry Promotion Division ☎055-934-4749

When: Sep.26 (Sat), 13:00 –

Where: Numazu Chamber of Commerce and Industry (Yoneyama Cho)

Examination fee: 5,630 yen

Application period: Aug.3 (Mon)-Sep.4 (Fri)

Please ask us about the details.

### **Job Interview for New Graduates**

Application and Inquiries: Hello Work Numazu Backup Corner ☎055-918-3712

Inquiries: Commerce and Industry Promotion Division ☎055-934-4749

When: Aug.19 (Wed), 13:00 – 16:30

Where: Numazu joint government building 5F (Ichiba Cho) Applicants: New Graduates

\*See the website <http://shizuoka-roudoukyoku.site.mhlw.go.jp/>

### August is Safety Electricity Use Campaign Month

Application and Inquiries: Kanto Electrical Safety Inspection Association ☎055-952-8101

Inquiries: Crisis Management Division ☎055-934-4758

### **Free Events**

#### Machinaka Dagashiya Gakko

Inquiries: Machinaka Dagashiya Gakko Office (Endo-san) ☎055-975-0340

This parent-child event has workshop and experience of working at stalls.

When: Aug.23 (Sun) 10:00~15:30

Where: Mishima Taisha Shrine (Ebisu Sando) and Taisya-no- mori

\*No reservation is required

#### Memorial Charity Concert during 'the Week of Thinking Tax'

Applications and inquiries: Numazu Hojinkai (incorporated organization) ☎055-925-7755



When: Oct. 9(Fri), 18:30 ~ / Where: Cultural Center Large Hall

Contents: Concert performed by The Czech Philharmonic Collegium

How to apply: Write your address, zip code, and name and telephone number on a return postcard, and post it to 〒410-0046, 2-14 Yoneyama-cho

(One postcard per person)

Start of applications: Aug. 10(Mon). ※Please ask about the details.

#### Exhibition of Senbon Plaza Mini Gallery

\* Pastel Art Paintings Drawn with Fingers Aug. 15(Sat) ~ 21(Fri)

## Enjoy Exercises and Sports!

### Participants in Training, Sports or Physical Fitness Classes (Sep. ~ Nov.)


Applications and Inquiries: Sports Promotion Division (in the City Gymnasium) ☎ 055-922-7200

Applicants: Physical fitness classes=People living in Numazu City


Physical fitness classes in each community=People living in or around the sites

How to apply: Send an *Ofuku Hagaki* (a postpaid postcard) with the following items written on it to the division by Aug. 12 (Wed). Or fill out the form, which is in the gym, and hand it in with a postcard.

#### ●The reply request portion of Ofuku Hagaki (a postpaid postcard)

[the front]	[the back]
<p>〒410-0055</p> <p> City Gymnasium, Sports Promotion Division, 1-4 Takashima Hon-cho, Numazu-shi</p>	<p>① Site</p> <p>② The name of the class you want to participate in</p> <p>③ Your name (with <i>furigana</i>)</p> <p>④ Birth date</p> <p>⑤ Sex</p> <p>⑥ Age (If you participate with your child, write the <b>child's name</b>, too.)</p> <p>⑦ Address</p> <p>⑧ Phone number</p>

#### ●The reply portion of Ofuku Hagaki (a postpaid postcard)

[the front]	[the back]
<p> 〒_zip_____</p> <p>Your address</p> <p>Your name</p>	

#### ☞ One class per postcard

☞ If your children take part in the ※marked class, write all their names on a postcard.

☞ In the ♦♥♣-marked classes, you can apply for only one class in the same mark.


☞ You can take part in one 'Fureai Gymnastics' or one 'Physical Fitness' of the physical fitness classes in each community if you want to.

☞ You can't join the classes (except for Parent/Father and Child class) accompanied with your child under school age.

☞ In case of too many applicants, there will be a drawing. The results of a drawing and notice of decision will be sent around Aug. 18 (Tue) by a return card.

☞ If you are prohibited from doing exercise, you can't join.

### Physical Fitness Classes

Numazu City Gymnasium [Address:1-4 Takashima Hon-cho]							
Class	Period	Day	Time	Capacity (people)	Fee (yen)	Applicant	Contents
Father & Child (※)	9/12~ 11/14	Sat.	10:00~ 11:00	30 (pairs)	3,000 per pair	Child who was born between Apr. 2, 2009 and Apr. 1, 2012, and Father or his / her Guardian	Parent and child enjoying gymnastics & rhythmical exercises
3-year-old Course (※)	9/10~ 11/12	Thu.	10:00~ 11:00	120 (pairs)		Child who was born between Apr. 2, 2012 and Apr. 1, 2013, and Parent	 <p>If you come with your baby, you need to carry him or her on your back</p>
4,5,6-year-old Course (※)	9/8~ 11/24	Tue.	15:30~ 16:30	80 (pairs)		Child who was born between Apr. 2, 2009 and Apr. 1, 2012, and Parent	
School kids Gymnastics (※)	9/11~ 11/13	Fri.	17:00~ 18:00	40	2,300	1 <sup>st</sup> &2 <sup>nd</sup> graders who are not good at sports	Mat Exercise, Exercise using a vaulting box
Senior sports	9/10~ 11/12	Thu.	19:00~ 20:30	30	3,500	Men over 30 years old	Indoor sports such as Soft Volleyball
Female Gymnastics	9/7~ 11/30	Mon.	10:00~ 11:30	50	3,000	Women over 18 years old	Stretching, Aerobics
	9/8~ 11/24	Tue.	10:00~ 11:30	150	3,000		
	9/11~ 11/13	Fri.	19:00~ 20:30	100	3,500		
(◆) Body Balance	9/9~ 11/18	Wed.	14:30~ 15:45	40	3,000	People over 18 years old	Muscle power strengthening, Balance training
Prevention	9/10~	Thu.	13:30~	40		People over 50 years	Exercises for

of Locomotive Syndrome	11/12	(◆)	15:00		3,000	old who can do exercise	relieving the pain in knees or low back
	9/4~	Fri.	13:30~	40			
	11/13	(◆)	15:00				
Exercise for Strong legs	9/9~ 11/18	Wed.	13:00~ 14:15	40	3,000	People over 60 years old	Walking, Balance training
Healthy gymnastics	9/8~ 11/24	Tue.	13:30~ 15:00	100	3,000	People over 60 years old	Stretching, Recreation games, Rhythmical exercise
<b>The Center for Working Youth</b> [Address: 15-1 Miyuki-cho]							
Female gymnastics	9/9~ 11/18	Wed.	10:00~ 11:30	120	3,000	Women over 18 years old	Aerobics, Stretching
	9/10~ 11/19	Thu.	10:00~ 11:30	120			
Healthy gymnastics	9/10~ 11/19	Thu.	13:30~ 15:00	120	3,000	People over 60 years old	Recreation, Stretching, Rhythmical exercise
<b>Heda B&amp;G Community Sports Center</b> [Address: 2053 Heda]							
Kids Sports A Course	9/5~ 11/21	Sat	9:00~ 10:00	20	2,500	3 <sup>rd</sup> – 6 <sup>th</sup> graders of elementary school	Mat Exercise, Running
Kids Sports B Course	9/5~ 11/21	Sat	10:00~ 11:00	20	2,500	Preschooler ~2 <sup>nd</sup> graders of elementary school	Exercise, Exercise using a vaulting box
<b>Indoor Swimming Pool</b> [Address: 2416-1 Kami-kanuki Ninohora]							
Parent and Child	9/8~ 12/ 1	Tue.	10:00~ 11:00	20 (pairs)	4,500 per pair	Child who was born between Apr. 2, 2012 and Apr. 1, 2013, and Parent	Emotional communication between parent & child through skin contact in a pool
Preschool kids course(※)	9/10~ 11/12	Thu.	15:30~ 16:30	30	3,500	Child who was born between Apr. 2, 2009 and Apr. 1, 2011	Playing and exercises in a pool

Elementary school kids course (※)	9/8~ 12/1	Tue.	16:00~ 17:00	30	3,500	Elementary school students who can't swim 25m in front crawl	How to swim in front crawl
Aqua walking	9/7~ 12/7	Mon. (♥)	9:45~ 10:55	60	4,500	Women over 18 years old	Walking in a pool
	9/8~ 12/1	Tue. (♥)	9:45~ 10:55	30			Exercises in a pool for relieving the pain in knees
(♥)Aerobics in a pool	9/7~ 12/7	Mon.	11:00~ 12:10	60	4,500	Women over 18 years old	Aerobics dance in a pool
(♥)Healthy swimming	9/7~ 12/7	Mon.	13:30~ 14:40	60	4,500	People over 50 years old	Crawl, Backstroke

### Physical Fitness Classes in Each Community

Class	Period	Day	Time	Capacity (people)	Fee (yen)	Applicant	Contents
<b>Hara Area: Hara Chiku Center</b> [Address: 1200-3 Hara]							
Parent & 3 years old child (※)	9/3~ 11/12	Thu.	10:45~ 11:45	30 (pairs)	3,000 per pair	Child who was born between Apr. 2, 2012 and Apr. 1, 2013 and Parent	Parent and child enjoying gymnastics & ball exercise
Parent & 4,5,6 years old child(※)	9/2~ 11/18	Wed.	15:30~ 16:30	30 (pairs)		Child who was born between Apr. 2, 2009 and Apr. 1, 2012 and Parent	
Female gymnastics A course B course	9/1~ 12/22	Tue.	A) 9:30~ 10:40 (♣)	45	2,500	Women over 18 years old	Aerobics, Stretching
			B)10:50~ 12:00 (♣)	45			
<i>Fureai</i>	9/2~ 11/18	Wed.	13:30~ 15:00	80	2,500	People over 60 years old	Recreation, Stretching,

gymnastics	9/3~ 11/12	Thu.	13:30~ 15:00	80			Rhythmical exercise
Ohira Area: Ohira Chiku Center [Address: 2197-1 Ohira]							
Fureai gymnastics	9/2~ 11/18	Wed.	A)12:50 ~14:05	30	2,500	People over 60 years old	Recreation, Stretching, Rhythmical exercise
			B)14:15 ~15:30	30			
Male fitness	9/4~ 11/6	Fri.	10:00~ 11:30	20	2,500	Men over 50 years old	Muscle power training, Stretching
Shizuura Area: Shizuura Chiku Center [Address: 34 Shishihama]							
Fureai gymnastics	9/4~ 11/6	Fri.	13:30~ 15:00	40	2,500	People over 60 years old	Recreation, Stretching, Rhythmical exercise
Ukishima Area: Ukishima Chiku Center [Address: 375-1 Hiranuma]							
Fureai gymnastics	9/1~ 12/1	Tue.	13:30~ 15:00	40	2,500	People over 60 years old	Recreation, Stretching, Rhythmical exercise
Heda Area: Heda B&G Community Sports Center [Address: 2053 Heda]							
Fureai gymnastics	9/3~ 11/12	Thu.	13:30 ~15:00	50	2,500	People over 60 years old	Recreation, Stretching, Rhythmical exercise
Ashitaka Area: Ashitaka Chiku Center [Address: 358-1 Higashibara]							
Fureai gymnastics	9/3~ 11/12	Thu.	13:30~ 15:00	40	2,500	People over 60 years old	Recreation, Stretching, Rhythmical exercise
Dai-3 Area: Dai-3 Chiku Center [Address: 750-4 Shimokanuki Yanagihara ]							
Fureai gymnastics	9/2~ 11/18	Wed.	13:30~ 15:00	45	2,500	People over 60 years old	Recreation, Stretching, Rhythmical exercise
	9/3~ 11/12	Thu.	13:30~ 15:00	45			
Katahama Area: Katahama Chiku Center [Address: 46-1 Ozuwa]							

Male fitness	9/3~ 11/12	Thu.	10:00~ 11:30	20	2,500	Men over 50 years old	Learning about diet, Muscle power training
Dai-5 Area: Dai-5 Chiku Center [Address: 15-1 Satsuki-cho]							
Physical fitness	9/3~ 11/12	Thu.	10:00~ 11:30	40	2,500	People between 18 and 59 years old	Muscle power strengthen- ing, Balance training
Kadoike Area: Kadoike Chiku Center [Address: 788-7 Okaishshiki]							
Physical fitness	9/2~ 11/18	Wed.	10:00 ~11:30	40	2,500	People between 18 and 59 years old	Muscle power strengthen- ing, Balance training
Fureai gymnastics	9/4~ 11/6	Fri.	A :13:00 ~ 14:15	40	2,500	People over 60 years old	Recreation, Stretching, Rhythmical exercise
			B:14:30 ~ 15:45	40			
Imazawa Area: Imazawa Chiku Center [Address: 527-21 Imazawa]							
Fureai gymnastics	9/2~ 11/18	Wed.	13:30 ~15:00	40	2,500	People over 60 years old	Recreation, Stretching, Rhythmical exercise
	9/3~ 11/12	Thu.	13:30~ 15:00	40			
Ooka Area: Ooka Chiku Center [Address: 2357-1 Ooka]							
Fureai gymnastics	9/3~ 10/29	Thu.	13:30 ~15:00	40	2,000	People over 60 years old	Recreation, Stretching, Rhythmical exercise
Uchiura Area: Uchiura Chiku Center [Address: 249-3 Uchiura Mito]							
Exercise for keeping fit	9/4~ 11/20	Fri.	10:00 ~11:30	40	3,000	People over 40 years old	Exercise for preventing Locomotive syndrome

## Sports Classes

Applicants: People living in or commuting to Numazu City

Inquiries: NPO Numazu-shi *Taiku Kyokai* (in City Gym) ☎ 055-922-7200

How to apply: Come to the designated place directly with the fee on the application day.

\*On first-come-first-served basis ☞ Applications by phone are not accepted.

\*The classes with ※ mark: In case of a lot of applicants, there will be a drawing.



How to apply for the classes in Indoor Swimming Pool: Write your name with furigana, address, birthdate, phone number, the class name on an *Ofuku Hagaki* (a postpaid postcard) and mail it to the Indoor Swimming Pool [Address: 2416-1 Kamikanuki Ninohora, 〒410-0813] \*In case of too many applicants, we will have a drawing.

Numazu City Gymnasium [Address: 1-4 Takashima Hon-cho]								
Class	Period	Day	Time	Capacity (people)	Fee (yen)	Applicant	Contents	Application day
Junior rhythmic gymnastics	9/7~ 11/30	Mon.	17:00 ~18:30	30	4,800	6-year-old~ 2 <sup>nd</sup> grade elementary school girls	Basic skills, rules, manners, rhythmic exercises	8/17 (Mon) 17:30
			17:30 ~19:00	10		3 <sup>rd</sup> ~6 <sup>th</sup> grade elementary school girls		
<i>Iaido</i>	9/1~ 11/17	Tue.	19:00 ~20:30	25	3,000	Junior high school students and older	Basic <i>Iaido</i> skills, manners and rules	8/20 (Thu) 19:00
<i>Judo</i> (twice a week)	9/1~ 11/13	Tue. Fri.	18:00 ~19:30	50	5,000	5 yrs. ~ junior high school students	Basic <i>Judo</i> technique, manners and rules	8/18 (Tue) 19:00
<i>Kyudo</i> (twice a week)	9/1~ 11/13	Tue. Fri.	18:30 ~ 20:30	20	5,000	Beginners (junior high school students and older)	Basic <i>Kyudo</i> technique, manners and rules	8/18 (Tue) 18:30

Soft tennis (※)	9/2~ 11/11	Wed.	17:00 ~18:30	20	2,000	3 <sup>rd</sup> -6 <sup>th</sup> grade elementary school children	Basic skills, manners, rules, games	8/19 (Wed) 17:30~ 18:00
			18:30 ~20:30	30	3,500	Junior high school students and older		8/19 (Wed) 18:30~ 19:00
Table Tennis 	9/3~ 11/5	Thu.	18:00 ~19:00	20	2,000	Elementary & Junior high school students	Basic skills, manners, rules and games	8/20 (Thu) 17:30~ 18:00
			19:10 ~20:40	20	3,500	Beginners over high school age		8/20 (Thu) 18:30
Badminton for beginners	9/3~ 11/5	Thu.	19:00 ~ 20:30	30	4,000	Beginners over high school age	Basic skills, manners, rules and games	8/20 (Thu) 19:00
<i>Kendo</i> (twice a week) 	9/3~ 11/7	Thu.	18:30 ~19:30	50	5,000	Elementary school children and older	Basic Kendo skills, manners and rules	8/20 (Thu) 19:00
		Sat.	18:00 ~19:00					
Ladies badminton (※)	9/4~ 11/6	Fri.	10:00 ~ 12:00	35	3,000	Female beginners	Basic skills, rules and games	8/21 (Fri) 9:45~ 10:00
Tennis (※)	9/4~ 11/6	Fri.	18:30 ~20:30	25	3,500	Female beginners over 15 years old	Basic skills, rules, and games	8/21 (Fri) 18:30
<i>Aikido</i>	9/6~ 11/29	Sun.	9:00 ~10:00	20	5,000	Beginners over junior high school age	Basic art of self defense	8/16 (Sun) 9:00
Sport Dance	9/2~ 11/11	Wed.	19:00 ~ 20:30	30	5,000	Beginners (working people)	Rhythmical exercises	8/19 (Wed) 19:00

<b>Koryo Budojo</b> [Address: 15-1 Miyuki-cho]								
<i>Kyudo</i> (twice a week)	9/1~ 11/12	Tue. Thu.	10:00 ~11:30	20	4,000	Female beginners	Basic skills, manners	8/18 (Tue) 10:00
<i>Kendo</i> (twice a week)	9/1~ 11/13	Tue. Fri.	18:30 ~19:30	30	5,000	Elementary school children and older	Basic skills, rules and manners	8/18 (Tue) 19:00
<i>Naginata</i>	9/2~ 11/11	Wed.	14:00 ~16:00	10	2,500	People over 18 years old	Basic skills, rules and manners	8/19 (Wed) 14:00
<i>Judo</i>	9/5~ 11/14	Sat.	18:30 ~19:30	50	3,000	Elementary school children	Basic skills, rules, and manners	8/15 (Sat) 19:00
Fencing (at Taiiku Center)	9/5~ 11/14	Sat.	17:00~ 19:00	15	5,000	4 <sup>th</sup> graders ~ junior high school students	Basic skills, manners, rules, and games	8/22 (Sat) 17:00
<b>Indoor Swimming Pool</b> [Address: 2416-1 Kamikanuki Ninohora]								
Beginners' Course	9/11 ~ 11/20	Fri.	10:00 ~11:30	50	5,000	Beginners over 18 years old	To swim the crawl and backstroke through 25m	Applicati on by Ofuku Hagaki (a postpaid postcard) ,not later than Aug. 17 (Mon)
	9/10 ~ 11/19	Thu.	18:30 ~ 20:00	25	5,000			
Intermediate Course	9/11 ~ 11/20	Fri.	13:30 ~ 15:00	15	5,000	Those over 18 years old who can swim over 25 meters	To swim the crawl and backstroke through more than 25m	

**Tour around 100 Treasure Troves in Numazu NO.40; Ra-Ra-Ra Sun Beach ~ the height of summer! Let's go to the beach and play together! ~**



Ra-Ra-Ra Sun Beach, an artificial seaside resort spot, is located along the coastline of Nishiura about a 40-minute drive away from the central urban area. The white sand with tiny pieces of shells and coral feels soft and looks beautiful. Waves there are quiet. The seawater quality has been selected as 'Particularly Favorable' by the Ministry of the Environment. The inspection result is the same as the seawater quality of Okinawa or *Hachijojima*. In the summer season, a lot of families visit the beach

from inside and outside of the city. In addition to the sea bathing, they can enjoy watching marine organism at *Isohama* (the artificial rocky shore), such as crabs and small fish, and scuba diving as well. Inquiries: Fisheries and Seashore Division ☎ 055-934-4753

You can check the motion picture of Ra-Ra-Ra Sun Beach on YouTube.

♣ Bits of Knowledge ♣

**The origin of 'Ra-Ra-Ra'**

The name was selected among the public and each 'ra' of Nishiura, *Hirasawa* and *Kuzura* is combined into 'Ra-Ra-Ra.'



**ISOHAMA** ▲ You can enjoy watching creatures in a tidal pool and playing on the beach.

✧ Neighboring Spots for Entertainment ✧

❶ **Awashima Marine Park:** Aquarium in the uninhabited island. Visitors go there by boat. They can enjoy shows performed by dolphins and sea lions. The park has the exhibition pavilion for toads and frogs which is the biggest in Japan. Visitors can relax and enjoy there all day long.

Inquiries: ☎ 055-941-3126

❷ **Izu-Mito Sea Paradise:** Two new attractions are now enjoying a surge in popularity; DON-Zoko = the large water tank in which abyssal life are exhibited / Kid's corner = *Mitoshii*-mini-Paradise

Inquiries: ☎ 055-943-2331

❸ **Ruins of Nagahama Castle (Officially-designated Historical Site):** Castle ruins of *Hojo* clan's naval forces which governed the area up to *Izu* during Sengoku Era (Period of Warring States). This site has been opened as a Historical Park since this May.

Inquiries: ☎ 055-952-0844 (Cultural Assets Center)

