

Numazu Newsletter

No. 322

March 15, 2016

Voluntary Supporters

Kalamazoo Division NICE

INFORMATION

<http://www.city.numazu.shizuoka.jp/>

You can get information about Numazu twice a month on this home page and some hard copies issued by Supportive Volunteers at the Tourist Information Office at the Numazu Station, Palette, the City Library Participation, the City Gymnasium, Speakeasy, the Tap Room, Catholic Church, Kato Gakuen, Chiku Centers and the City Hall

Information

The City is going to Reorganize the Divisions after Apr. 1

Inquiries: Policy Planning Division ☎ 055-934-4813

The city government will reorganize the divisions so that citizens can make more use of them and the divisions can cooperate and work well together in solving problems.

Numazu Station Area Maintenance Department, City Hall 6F

In order to promote the Numazu station area maintenance project, the city planning department will abolish the Numazu Station Area Maintenance Office and start up a new department “Numazu Station Area Maintenance Department (*Numazueki Shuhen Seibi Bu*).

Fire Department Headquarters

The city will abolish the Fire Department Headquarters because its control will be transferred into “Sunto Izu Fire Department Headquarters,” which covers four cities, including Numazu, and three towns in the eastern area of Shizuoka.

*How to call 119 is the same as usual.



Crisis Management Division, City Hall 5 F

Along with the abolishment of Fire Department Headquarters, the division will start up a “*Kouiki Shobo Renkei Shitsu*(Fire Department Cooperative Office)” so that the city can take over the official work of local fire companies.

City Planning Department, City Hall 5 F

In order to make the operations more effective, the department will abolish “Planning Division,” “Architecture Guidance Division” and “City Center Development Planning Office,” and start up

“Machizukuri Seisaku Ka (Town Development Policy Division)” “Machizukuri Shido Ka (Town Development Guidance Division)” “Koryokoen Shuhen Seibi Shitsu (Koryo Park Area Improvement Division).”

<Other Changes>

Planning Department, City Hall 2 F

* Numazu Heritage Promotion Division will start up four sections “City Promotion section (*City Promotion Gakari*),” “Hometown Tax Promotion section(*Furusato Nouzei Suishin Gakari*),” “(Koumin Renkei Kikaku Gakari),” and “ Project Promotion section (*Jigyo Suishin Gakari*)”.

* Community Association and Promotion Division (*Chiiki Jichi Ka*) will integrate Civic Collaboration Division (*Shimin Kyodo Ka*) into one division and start up “*Chiiki Shinko Gakari* (Community Promotion section),” *Kotsu Bohan Gakari* (Traffic and Security section), “*Kyodo Suishin Gakari* (Collaboration Promotion section)” and “*Kokusai Gakari* (International Relations section)”.

* Public Relations Division will start up a “Consumer’s life Center.”

Planning Department, City Hall 8 F

* Information System Division will change one of the section “My Number’ Preparatory Office” into “My Number’ Promotion Office.

Community Service & Welfare Department

* Resident Registration Division will abolish the “Heda Crematory”.

Industry Promotion Department, City Hall 2 F


* Agriculture and Forestry Division will abolish “Cadastral Research section (*Shiseki Chosa Gakari*).

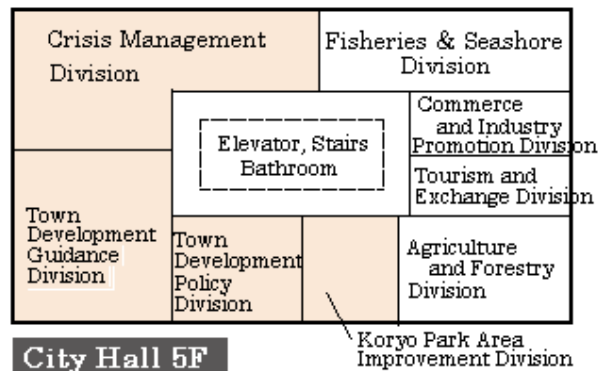
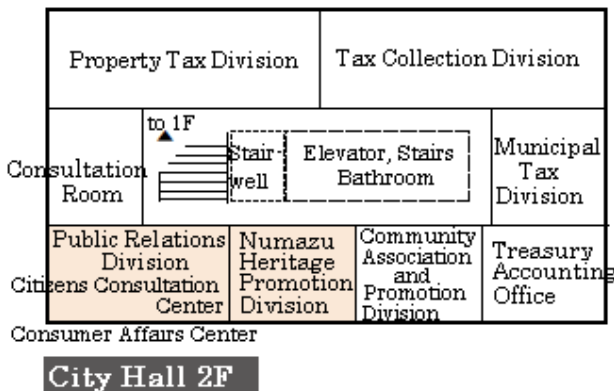
City Planning Department, City Hall 6 F

* City Maintenance Division will abolish “Redevelopment section (*Saikaihatsu Gakari*).

Change of Floor Layout

Floor Layout will be partially changed in accordance with the minor change of organization.

 Pink sections will be changed.



Events

~*Ose Festival & the 28th Uchiura Fishing Port Festival*~

Inquiries: Numazu Tourism Division ☎ 055-934-4747

When: Apr. 4(Mon) 7:30 ~ 12:00 *Ose Jinja Shrine* 8:30 ~ 14:00 *Uchiura Port*



Be sure to see *Isami Odori* (dance of bravery) performed by young men in female *kimono*, and the fishing boats decorated with colorful flags. You'll also enjoy fresh seafood at the festival.

Program

At *Ose jinja shrine* (*Nishiura-enashi*)

7:30 ~ 12:00 Boats with dancers get together at *Ose*
Dried fish, *amazake* and miso soup with pork and vegetables are served.
Some events(*Isami Odori* dance performance and *Yosakoi* dancing)

Inquiries: *Ose Bay Commerce Association* ☎ 055-942-3052

At *Uchiura Fishery Port* (*Uchiura-mito*)

8:30 Fishing boats leave the port. Markets open.
9:20 *Uchiura Fishing Port Festival* Opening ceremony
9:45 Kato Gakuen High School Marching Band performance and parade
10:00 Lottery
11:30 Fishing boats arrive at the port. Boats with dancers parade.
13:00 Kato Gakuen High School Marching Band performance and parade.

Inquiries: *Uchiura Fishery Cooperative Association* ☎ 055-943-2316

Boat schedule for visitors

7:45 From Numazu Port *Prior reservation needed.
Fares: 2,300 yen (Adults), 1,500 yen (from 4 years to elementary school students)
8:00 From Uchiura Fishing Port *No reservation needed.
Capacity of the boat: about 100 people / Fare: free

Application & inquiries: Chidori Kanko Kisen ☎ 055-943-2221

Recruitment

Tea Pickers Are Now Recruited: the tea as the present to the Imperial Family

Applications & Inquiries: Agriculture and Forestry Division ☎ 055-934-4751
Numazu-cha (Japanese green tea produced in Numazu) has been selected as the tea to be presented to the Imperial family. Tea plants in the designated farms are now taken good care of so that their tea leaves will become high-quality tea. On this commemorative occasion of presenting Numazu-cha to the Imperial Family, the city government will recruit tea pickers.



When: April 24 (Sun), 10:00 ~ 12:00

Where: Tea farms designated for making tea as the present to the Imperial Family (Meeting Time: 9:45 / Meeting place: *Ukishima Chiku* Center / Traveling by bus)

Capacity: 40 persons (first-come basis)

How to apply: By phone / after 8:30 on March 22 (Tue)

■What is “the Project of Making Tea as the Present to the Imperial Family”?

This project has been carried out since prewar period as a traditional event of presenting high-quality tea to the Imperial Family, whose tea plants are taken good care of in the tea farms in Shizuoka prefecture. Numazu city has been designated as the area for making tea as the present to the Imperial Family, which is the third time after 20 years; the first time in 1983, and the second time in 1996. The process of making “Tea for Imperial Family” is “*shizen-jitate* (the way of growing tea plants naturally)”, which is a traditional and troublesome way of making tea without using machines. Also in the tea farms which have been designated as the tea farms for this year to grow “Tea for Imperial Family”, tea plants grow taller and their branches are thicker than those in the tea farms managed by using machines, and also their tea leaves are superior though the yield of the leaves is rather low. After picking an unopened fresh top and two leaves under it (*isshin-niyou*) from each branch of tea plants all by hand, the process of producing the best-grade tea is done all by hand as well.

■The Mayor visited the designated tea farms producing “Tea for Imperial Family”



The Mayor visited the four tea farms, which are now preventing disease and pests and conducting fertilization, speaking words of appreciation and encouragement to each of the four farm owners.

~Thinking about the Scenery of Those Days~

❖UKIYOE (Japanese Woodblock Print) Depicting a Tea Farm❖

This *ukiyo*e was made by *Adachi Ginko*, a woodblock printer in Edo Period, in which women in kimono are picking tea leaves by hand. Since this work was found in the old family in *Izu* city, its scenery is thought to be the landscape seen somewhere in Shizuoka Prefecture.





Child Raising

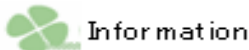
Let's Expand The Circle of Communication for Easy Child-Raising!



Hi, U-san! <Vol.8> Small Childcare Establishment “Pon Pon no Mori” Opens

In January, the first small childcare establishment opened in Ooka in order to reduce the number of children on the waiting list. The establishment is an approved facility, which can accept 19 children aged between zero and two. Though the establishment has some differences from the ordinal nursery schools, such as no playground, you can expect careful nursing as there is one more nursery staff for each age, etc. Numazu city is going to open more childcare establishments.

Inquiries: Child Support Division ☎055-934-4826



Information

Shizuoka Nurturing Courtesy Card Is Used Widely

Shizuoka nurturing courtesy card is distributed to parents whose children are under 18 years old and to pregnant females. You can get specific benefits at some shops or facilities in Shizuoka. From April 1(Fri), you will be able to get the benefit all over the country.

For further information: <http://www.pref.shizuoka.jp/kousei/ko-130/yuutai.html>

Inquiries: Child Support Division ☎055-934-4826



Event

Lecture of “Child’s Reading Week”

The process of issuing *Kagaku no Tomo* – What is *Kagaku* (science)?”

When: Apr.24 (Sun) 13:30~15:00 / Where: City Library (audiovisual hall)

Contents: “What is science for children?” through a monthly picture book “*Kagaku no Tomo*”

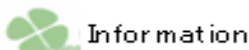
Lecturer: Mr. Masanori Kawanabe, chief editor of *Kagaku no Tomo*

Capacity: 200 people (first come, first served)

How to apply: apply at the counter or by phone from Mar.23 (Wed) 9:30

*If you need child care, please make a reservation.

Applications & inquiries: City Library ☎055-952-1234



Information

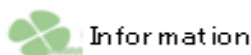
Child Abuse Prevention

Inquiries: Child-Rearing Family Welfare Division ☎ 055-934-4828

Numazu City is now making some efforts to eliminate child abuse in collaboration with the police and child guidance center. If you see child-battering or you know an alleged child abuser, please don't hesitate to report that to us or the following number.

Child Guidance Center toll-free number from anywhere in Japan: ☎ 189

You can make an anonymous phone call.



“Konoko no Kawaisa”

Inquiries and Applications: School Education Division ☎ 055-934-4809

An old lullaby sung around the Numazu area, ‘Konoko no Kawaisa,’ will be broadcast at 17:00 every day from Mar. 19(Sat) to Apr. 5(Tue). Hearing the melody, please say to children, “It’s time to go home.”



Steam Locomotives “THOMAS & Friends” Family Musical Show: Treasure Troves in Sodo Island!

Inquiries and Applications: Cultural Center ☎ 055-932-6111

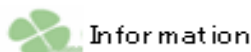
Cultural Promotion Division ☎ 055-934-4812

When: Aug. 28(Sun) ①12:00 ②14:30

Where: Cultural Center (Big Hall) / Fee: 2,800 yen

*Kids of two years and over need their own tickets. When little kids need their own seats, they have to pay for them.

Tickets: Tickets can be available on Apr. 2(Sat) at the ticket counter of the Cultural Center.



Recruitment of New Members for Boy Scouts, Girl Scouts, and Numazu Sea Cadets Federation

Inquiries: Lifelong Education Division ☎ 055-934-4871

How to apply: Phone or FAX at each number below

***the Boy Scouts**

Inquiries and Applications: The Boy Scouts Numazu <Tamura-san>

☎ 055-951-2236 / FAX: 055-951-2246

Applicants: Elementary school students living in Numazu City

***the Girl Scouts**

Inquiries and Applications: The Girl Scouts Numazu <Uehara-san>

☎&FAX: 055-921-2533

Applicants: 5-year-old girls, girls of elementary and junior high school living in Numazu City

***Numazu Sea Cadets Federation**

Inquiries and Applications: Numazu Sea Cadets Federation <Nagasawa-san>

☎ 055-962-1612 / FAX: 055-962-1613

Applicants: Elementary, junior high and senior high school students living in Numazu City

Recruitment

Members of delegation to / Homestay in Sister City, Kalamazoo

Applications & Inquiries: Head Office of NICE (Civic Collaboration Division) ☎ 055-934-4717

***Members of Citizen's delegation to Kalamazoo**

Period: Jul. 21 (Thu) ~ 29 (Fri)

Applicants: a person living in and commuting to Numazu City or who are members of NICE

(under 18 needs to be with their guardians)

Capacity: 15 people (if many, the drawing will be held)

Expenses: About 210,000 yen (including fuel surcharge)

How to apply: Fill out an application form from Civic Collaboration Division

(City Hall 2F) and bring them with your phone to the office directly or send by mail.

Deadline: not later than Apr. 28(Thu)

***Homestay student in Kalamazoo**

Period: Jul. 21(Thu) ~ Aug. 5(Fri)

Applicants: High school students living in Numazu or who are members of NICE

Capacity: 2 person (be selected)

Expenses: About 220,000 yen (including fuel surcharge)

How to apply: Fill out an application form from Civic Collaboration Division (City Hall 2F) and write the purpose of application, and bring them to the office directly or send them by mail.

Period for applications: Apr. 1 (Fri) - 28 (Thu)

**The selection will be held on May 9(Mon).



Scholarship for Nurses and Midwives

Applications & Inquiries: Numazu Municipal Hospital, Administration Division ☎055-924-5100

Scholarship Payment: 70,000yen/month for four year college student

50,000yen/month for junior college or nurse's college student

Applicants: person who attends or will enter a nurse's school or a midwife school, who doesn't get another scholarship and will get a job at Numazu municipal hospital just after graduation.

Capacity: about 7 people

How to apply: Fill out an application form which can be received at Numazu Municipal Hospital, 2F, Administration Division or HP and bring them to the hospital or send by mail.

Deadline: not later than Apr.14 (Thu)

*After working at municipal hospital for the equivalent loan period as a nurse or a midwife, repayment will be exempt.

*Please see HP of the hospital about the details.

Pleasure Boats: Available Space for Ground Safe Keeping and Mooring

Applications & Inquiries: *Uchiura* Fishery Cooperative Association ☎ 055-943-2316

Inquiries: Fisheries and Seashore Division ☎ 055-934-4753

Uchiura Fishery Cooperative Association is now calling for those who want to keep their pleasure boats at *Uchiura* or *Nishiura* fishery harbor.

*Please make inquiries about the details.

Participants for JA Nansun Aguri School

Inquiries & applications: JA Nansun Aguri School Office ☎ 055-933-7009

Inquiries: Agriculture and Forestry Division ☎ 055-934-4751

Agriculture school where you make rice and vegetables and cook.

When: May – Nov.

Applicant: New 3 – 6 graders of elementary school who live in Numazu, Susono, Nagaizumi & Shimizu-cho.

Capacity: About 100 persons

Fee: 10,000 yen

Due date to apply: Apr. 11(Mon) *About how to apply, please visit the website or look at a leaflet which is available at each JA Nansun branch

Website: <http://nansun.ja-shizuoka.or.jp/>

Events

Numazu High School Festival 2016

Inquiries: Lifelong Education Division ☎ 055-934-4871

High school students and students of National College of Technology sing, show music band and dance. There will be some snack stands.

When: Mar. 26(Sat) 10:00 ~ 14:00 / Where: Nigiwai-hiroba in front of Numazu Station

Capacity: 100 people *Come to the site on the day.

Walking for Cherry Blossom Viewing at Kanuki-yama

Inquiries: Narukawa san(Numazu sightseeing volunteer)

☎ 090-8132-7016

Tourism and Exchange Division ☎ 055-934-4746

When: Apr. 2(Sat) (It will be cancelled in case of heavy weather)

Where to meet: Cultural Center, at 9:00

Course: Cultural Center – Koryo-dai – mountaintop of Kanuki-yama – Shibazumi observatory-
Reizan-ji – Cultural Center (about 3 hours)

*Come to the site on the day.



The Ceremony of *Ganyudo* Ferry Boat Entering Service

Inquiries: Numazu *Ganyudo Gyogyo-kyodokumiai* ☎ 055-931-1395

Tourism and Exchange Division ☎ 055-934-4746

The opening ceremony

When: Mar. 21(Holiday) 9:00 ~

Where: *Ganyudo* Ferry boarding gate (behind *Ganyudo gyokyo*)

*If it is bad weather, only the ceremony will be held at *Ganyudo-rengo-jichikaikan*.

*At the boarding gates at 8:30 on the day, free boarding tickets will be given to the first 30 people.

Memorial souvenirs (such as dried fish set) will be presented to the free boarding ticket holders.

*On the day, the first ferries departing at 9:00 for *Ganyudo* and Ayumi Bridge, respectively, are cancelled for the ceremony.

***Ganyudo* Ferry Boat Entering Service**

When: Saturdays, Sundays and national holidays from Mar.21 to May 29, from July 16 to July 31, and from Sep. 17 to Nov.27

Fares: 100 yen for junior high school students and older

50 yen for elementary school students (free for kindergartner and under)

*Please contact us or see the city web page about the navigation service.

Classes, Lectures

Healthy Exercise Class

Inquiries: (NPO) Health Community Shizuoka ☎ 055-961-2238

Civic Collaboration Division ☎ 055-934-4807

When: Apr. 1 (Fri), 8 (Fri), 12 (Tue), 20 (Wed), 18:45 ~ 20:15, (4 times in total)

Where: San-well Numazu, Multi-Purpose Hall

Contents: Balance ball exercise, ladder step exercises, and others

Applicants: people who are interested in health for middle-aged people

Instructor: Mr. Kenji Mitsumoto (Professor of Tokai University)

Capacity: 40 people (in order of arrival)

Things to bring: towel, drinks, indoor shoes ※Please wear comfortable clothes.

How to apply: from Mar.22 (Tue) 9:00, by phone

Information

Re-opening of the Pool of Heda B&G Community Sports Center

Inquiries: Heda B&G Community Sports Center ☎0558-94-3501

When: Apr. 1(Fri), from 9:00

The Areas of Public Sewer Use are Spread from April.

Inquiries: Sewage Construction and Management Division ☎ 055-934-4864

The public sewer in the parts of the following areas is available, so the early connection to it is welcomed. Notice is sent to the new beneficiaries to be levied the contributions around June. Your cooperation is appreciated.

(Dai-5・Ohka Area) Ohka

(Kanaoka・Kadoike Areas) Okaishiki, Okanomiya, Nishikumando and Matsuzawa-cho

(Katahama Area) Nishimakado and Ohtsuka

(Dai-3 Area) Shimokanuki-toinokuchi, Hayashinoshita, Kinomiya, Ishihara, Uenohara, Nishimura, Rokutan, Yamaru, Banba and Yanagihara

*please see the city's home page about the details.

Free Events

Family Campus. Both Children and Adults Play, Learn and Enjoy It

Inquiries: Happy Man Café, Watanabe-san, ☎ 090-8488-6148

When: Mar. 27(Sun), from 10:00 to 15:00

Where: Former Shizuura West Elementary School(in Shige)

Contents: special classes you learn from various professionals, play corners utilizing a closed school and school lunch using local vegetables, etc.

Capacity: 500 people

*no reservation is required.

*contact us about the details or see the home page.

Home page address <http://familycampus.jimdo.com/>

Tree Planting in Peace Forest and Strolling Through It

Applications and inquiries: Sayonara Kakuheiki no Kai, Endo-san, ☎ 055-931-5438

When: Apr. 3(Sun) (in case of rain, it is held on Apr. 10(Sun)).

Place to meet: Suijin-sha at 9:00(come to JR Numazu station, north exit at 8:15 if you need pick-up.

Contents: tree planting, nature observation, etc.

Things to bring: working clothes, shoes, cotton gloves, lunch, drinks and rain gear.

How to apply: by phone



*contact us about the details.

One Day Experience of Tai Chi

Inquiries: Shizuoka Chinese Wushu Society, ☎ 055-979-4466

When: Mar. 25(Fri), from 13:30 to 15:00

Where: The City Gym, Kendo-jo

Things to bring: Exercise clothes and indoor sports shoes

*No reservation is required.



Observing and Experiencing of Square Dance

Applications and inquiries: Numazu Happy Dream SDC, Nakata-san, ☎ 090-4234-0560

When: ①Mar. 26(Sat), from 19:30 to 20:30 ②Mar. 29(Tue), from 14:30 to 15:30

Where: ①Katahama Chiku Center ②Kanaoka Chiku Center

Things to bring: indoor sports shoes

How to apply: by phone

The Meet of Turning Over Adult Dogs

Inquiries: NPO Shizuoka Therapy Dog Support Club, Kato-san ☎ 055-962-3190

It is held to recruit new owners of adult dogs that are just drawn from health centers.

When: Mar. 20(Holiday), from 11:00 to 13:00

Where: San-no Park(in Hira-machi)

*in case of rain, it is held in front of the entrance of the city hall.

Exhibition of Mon Muse Numazu

Bienko Exhibition ・ Yukichika Maeda's Exhibition

From Apr. 9(Sat) to May 8(Sun), from 10:00 to 17:00(admission is until 16:30, but 16:00 on the last day)

April



Let's Participate in Events in the Central Area of Numazu

~ Information Center for Events in *Machinaka* ~

☺*Nakamise Shopping Street*☺

April 2 (Sat) : ①Tea Ceremony by Omote-Senke ②Tea Market

Let's enjoy Japanese Tea ceremony! If you buy tea leaves for more than 5000yen, you will get 1 kg of rice as a present.



When:①13:00~15:00 ②12:00~16:00 Where: Nakamise-syoutengai

▶ ☎055-962-3246 (Ichikawaen, Nakamise-Syoutengai)

☺**Nakamise Shopping Street**☺

April 3(Sun): Nakamise Runway PART4

When: 11:45~ / Where: Nakamise-syoutengai

▶ ☎055-963-2580 (Nakamise-Syoutengai)



Good Luck, Azul-Claro NUMAZU!

Another soccer season has started. “Azul-Claro NUMAZU” is a soccer team in Numazu City striving to reach the goal of joining J. League. Give great support to the team!

※For further information,
contact us.

Inquiries: Azul Claro

Suruga ☎ 055-929-8811

Website:

<http://www.azul-claro.jp/>



Events

The 3rd Hakuin-jyuku Forum

Contents:①An American became a Buddhism Priest ②the time when Hakuin had lived

When: March 27th(Sun), 13:30~16:30

Where: Plaza Verde Convention Hall B

Lecturer: Mr. Thomas Kirchner “Zen Master of Tenryu-ji temple”



Yoshizawa Katsuhiko “Associate Researcher in Zen Studies,
Former Professor of Hanazono University”



Capacity: about 100 people

Participation fee: 2000 yen

(if you are the member of Hakuin-jyuku, it's free.)

※For further information, contact us.

Application and Inquiries: Office of Suruga Hakuin-jyuku ☎055-925-0512

Inquiries :“Numazu no Takara” Promotion Division ☎055-934-4879