



NOVEMBER 2019 NEWSLETTER

11月

English Version

November 2019 Newsletter

★ Educational loans salaried employee

- **Details:** Salaried employees living in Shizuoka can be supported from the city by interest of salaried employee. It could be used for students going to college, junior college, specialized upper secondary schools.
- **Interest:** 1.5% (5 years)
- **Maximum amount:** 3,000,000 yen
- **Contact:** ☎ 055-926-5515 Roukin Numazu center or ☎ 055-934-4749 Commerce and Industry Division (Shoko Shinko ka)

★ Let's enjoy time with flowers and plants!

94th Aki No Midori Matsuri (Autumn's Green Festival)

- **When:** November 2nd (Sat) and 3rd (Sun); 9:30 am - 4:00 pm (Until 3:00 pm on the 3rd)
- **Where:** Plaza Verde (Kira Messe Numazu)
- **Details:** Gardening market, Local Product Market, Food and Drink Sales, Flower Arrangement/Bonsai Exhibition, Lottery, etc. Check the City's website for details.
- **Special Events:** Green Auction (November 3rd from 12:00pm) Have a fun with some workshops! Herbarium, Christmas wreaths flower arrangements, bonsai arrangements for beginners, parent and child woodwork class and so on.
- **Contact:** ☎ 055-934-4795 of Numazu City Green and Parks Division



★ Special reception counter for individual number card

- **When:** 9:00 am - 1:00 pm on November 9th (Sat), December 8th (Sun)
- **Where:** Community Service Division in the first floor of the city hall
- **Who:** People who have applied for individual number card, and received a notification postcard.
- **Details:** For people who can't receive their individual number card when the government office is open, a special reception counter will be set up (reservation system, about 20 minutes per person). Each day will accept 30 applicants and it is on a first-come first-served basis.
- **Contact:** ☎ 055-934-4721 Community Service Division (Shimin ka)



★ Public Sewer Available in the following districts from November

- **Details:** Public sewer will be available in some areas of the following districts, so please check if you can access the sewer if you are in the subject area.
- **Where:**

District	Subject Area
Ooka District	Ooka
Daigo District	Fujimicho
Kadoike District	Okanomiya
Katahama District	Nishimakado
Daisan District	Shimokanuki

- **Contact:** ☎ 055-934-4864 Sewer Maintenance Division (Gesuidou Seibi ka)

★ The minimum wage in Shizuoka has been amended to 885-yen per hour.

- **When:** Beginning October 4th (Friday)
- **Where:** Whole area of Shizuoka
- **Who:** Workers in Shizuoka prefecture
- **Details:** By the amendment of minimum wages in Shizuoka on the 4th of October, the minimum wages became 885-yen.
- **Contact:** ☎ 054-254-6315 Shizuoka Labor Bureau Wage Office or ☎ 055-934-4749 Industry Promotion Division (Labor and Welfare Section) (Shoko Shinko ka)

★ Specific medical examination

- **When:**
 - Male: 1st of December (8:30-11:30 & 13:00-15:30)
 - Female: 30th of November (8:30-11:30 & 13:00-15:30), 2nd of December (8:30-11:30 & 13:00-15:30)
- **Where:** Health Promotion Division (Health center)
- **Who:** For those who are above 40 years old and who have a national health insurance from Numazu, and has subscribed to the late elderly care system.
- **Details:** You need to bring the Numazu City Health Checkup Ticket and the health insurance card
- **Contact:** ☎055-951-3480 Health Promotion Division (Health Center) (Kenko Zukuri ka)

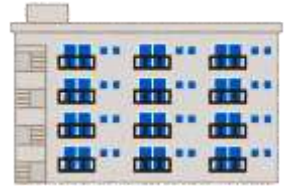
★ Appropriate Amount of Drinking

- Alcohol-related issues awareness week starts from November 10th (Sun) to November 16th (Sat).
While alcohol can make us feel better, inappropriate drinking habit will lead to health problems.
- Here are some appropriate amounts of alcohol to live happily:
 - A bottle of beer 500ml
 - 1 cup of Japanese rice wine 180ml
 - 2 glasses of wine 200ml
- **Contact:** ☎ 055-951-3480 Health Promotion Division (Health Center) (Kenko Zukuri ka)

★ Recruitment of Municipal Housing

• **Who:** Residents who fulfill the qualifications below:

1. People who are living together with relatives or planning to live together (1 room for Hara apartment, Imazawa apartment, Fugaku apartment, Park Fujiibara allows people over age 60, people with disability certification, or single people)
2. People who meet the income standards set forth in the regulations
3. People who live in the city or commuting to work
4. People who are distressed by housing
5. People who are not gang members (Including housemates)



Recruitment for Multi-unit apartment	Number of open room(s)	Recruitment for Multi-unit apartment	Number of open room(s)
Ishida apartment	1	Nishiide apartment	3
Nakao apartment	3	Jiyugaoka apartment	1
Ookubo apartment	4	Imazawa apartment	6
Matsubara apartment	4	Fugaku apartment	1
Haratorisawa housing	3	Buru-Anjero	1
Hara apartment	7	Park Fujiibara	1
Haramachinaka apartment	3		

• **When:** Directly apply at the Numazu City Hall from November 12th (Tue) to 14th (Thu), between 8:30 am to 5:00 pm

• **Lottery Date:** November 26th (Tue) from 1:30 pm

※Parking lot is limited ※Occupancy date will be on late Jan. in 2020

※Public lottery will be hold for many applications

※Those who apply for the first time, please come over to Housing Maintenance Division at 6th floor of Municipal office. Please contact us for any concern of details.

Apply/Contact: ☎055-934-4792 Housing Maintenance Division (Municipal Housing Staff)
(Jutaku Eizen ka)

★ Nighttime consultation of Taxes

• **What:** December 2nd (Mon) is the tax deadline for 3rd term of municipal tax. Please don't forget to pay the tax

• **Details:** Nighttime Payment Consulting service has been established.

• **When:** November 18th (Mon), 17:15- 19:00

• **Where:** Tax Payment Management section in 2nd floor of the city office.

• **Contact:** ☎ 055-934-4732 Tax Payment Management section (Tax Payment Promotion section)
(Nozei Kanri ka)

★ Let's Nighttime payment consultation for water bill

• **When:** From 5:15 pm – 8:00pm on November 7th (Thu)

• **Where:** Waterworks service section, first floor in Waterworks service government department office building

• **Contact:** ☎ 055-934-4853 Waterworks service section (Suido Service ka)



★ Nighttime and holiday services for health insurance

- **What:** December 2nd (Mon) is the due date for the 5th term health insurance premium. Please don't forget to pay it.
**Night-time and Holiday consulting window will be open.*
 - **When:** Night-time window on November 18th (Mon), 17:15- 19:00
Holiday window on November 17th (Sun), 9:00- 12:00
 - **Where:** City hall, 1st floor, Health Insurance section
 - **Contact:** ☎ 055-934-4727 of Health Insurance section (Kokumin Kenko Hoken ka)
-

★ November is the “Enhanced Earthquake Disaster Prevention Measures month”

To minimize the damage caused by an earthquake, it is important that each person checks a familiar danger. On this occasion, let's look again at disaster measures in your home and region.

- **When:** During the soccer match of Azul Claro Numazu, there will be an exhibition booth for disaster measures.
November 24th (Sun) from 10:00 am to 1:00 pm
 - **Where:** Ashitaka Park Stadium
 - **Contact:** ☎ 055-934-4803 Crisis-Management Section (Earthquake Prevention managers)
(Kiki Kanri ka)
-

★ Let's prevent fire

Prevent fires by the letters 「Hi (ひ) to (と) tsu (つ) zu (ず) tsu (つ) i (い) i (い) ne (ね)」

7 tips for fire prevention at home: 3 habits and 4 measures

It is getting colder and it will be the season where heaters will be needed, so make sure we have the 7 tips in mind.

- 3 habits for fire prevention
 1. Do not smoke in bed.
 2. Stoves can catch things on fire very easily so move things that can easily catch on fire far away from stoves.
 3. When you are done using the gas stoves, be sure to turn it off.
- 4 measures for fire prevention
 1. Install residential fire alarms in your home.
 2. Use fireproof products.
 3. Purchase a residential fire extinguisher in your house.
 4. Cooperate with your neighbors and help each other to prevent residential fires
- Some things to note:
 - Beware of malicious door-to-door sales!
 - Firemen DO NOT sell residential smoke detectors or fire extinguishers, so please be careful.
 - Have you had your residential smoke detectors checked?
- Please remember the following:
 - Smoke detectors can only be used for 10 years since the installation of residential smoke detectors.
 - The time period until replacing a residential smoke detector is said to be around 10 years, considering the lifespan of batteries. Let's check the smoke detector installed in your house and try to prevent fires.
- **Contact:** ☎ 055-991-5119 Sunto Izu Fire Department Head Office

★ Women's rights hotline

- **What:** Nationwide "Women's rights Hotline" Reinforcing Week
- **When:** November 18th (Mon) – 24th (Sun), 8:30 am to 7:00 pm (10:00 am to 5:00 pm on the 23rd and 24th)
- **Who:** For women with problems like domestic violence, sexual harassment at your workplace, being followed by a stalker or other women's rights questions.
- **Details:** We will consult women with social problems via telephone calls.
- **Contact:** ☎ 054-254-3555 Shizuoka Local Legal Affairs Bureau Rights Protection Division
☎ 055-934-4700 Community Safety Section (Citizens consulting center)
(Seikatsu Anshin ka)

★ Please pay the city tax before the due date

November and December are the non-payment consolidation months in Shizuoka Prefecture. Not paying the city tax means inequality between people who paid the tax on time, so it might contribute to the trouble in providing services. This city actively works to reduce the amount of non-payment.

■If you did not pay the city tax

If you did not pay the city tax, overdue fine will be added in a rate of 8.9% annually. If you keep not paying the tax or contact to the city hall even after the reminder letter, you will be forced to pay the tax by law in the following order written on the right.

■To reduce the amount of non-payment

Recently, number of compulsory collection has been increasing, especially the case which investigates the salary and foreclose it. Also, we might go inside the house of non-payer and investigate properties.

※Investigating the properties and foreclosure are done according to the law, and can be done without noticing the non-payer.

Process of the tax delinquency collection

Sending a Tax Delinquency Notice

A tax delinquency notice is sent to the delinquent taxpayers 20 days after the due date. They have to pay another 50 yen for the issuance of a tax delinquency notice.

↓

Investigation of Property

Information about the delinquent taxpayer's property is collected from interviews, inspections and searches in his/her workplaces, banks, insurance companies or business partners.

↓

Attachment of Property

Seize property (deposits and savings, salary, life insurance, account receivables, cars) which were determined by the investigation.

↓

Realization, Dividend

Seized property will be realized for levying and public auction. Money gained is used for the unpaid tax debt (municipal tax, delinquency tax etc.).

<If you have any reason you can't pay tax>

We will create a plan for you to pay tax based on your living condition if you have any unavoidable circumstances such as diseases, disasters, unemployment, relinquishing of business, or unprofitable business operation that you can't pay tax until the due date.

We have set up a consultation system for night, so please contact us early.

Contact: ☎ 055-934-4732 Tax Collection Division (Nouzei Kanri ka)

★ International Fair

Date: November 24th (Sun.), 2019 10:00 a.m. ~ 3:00 p.m.

Place: Sun-Wel Numazu 4F & 2F (Numazu shi Hinode-cho 1-15)

Booth: Philippines, Taiwan, Cuba, India, Peru, Iran, Pakistan, Indonesia, Mexico, Flower arrangement, Tea ceremony, Koto & Sengen (Traditional Japanese musical instruments), Japanese dance, Kimono fitting, Numazu Kosen (National Institute of Technology, Numazu College), Exhibition and workshop by NICE.

Performance : World music and dance are a must-see! Check the city's website for the program.

Contact : Numazu-shi Chiiki Jichi ka, Kokusai kakari at 055-934-4717

*Parking spaces are limited. Use public transportation as much as possible.

DISCLAIMER: The English version is a translation of the original newsletters in Japanese. While reasonable efforts are made to provide accurate translations, there might be some discrepancy. We encourage you to please report if you find any inaccuracy or translation error.

Translated by Gyoshu High School Students