

The 30th Edition of Thinking about Peace



Condition of Numazu after Air Attacks

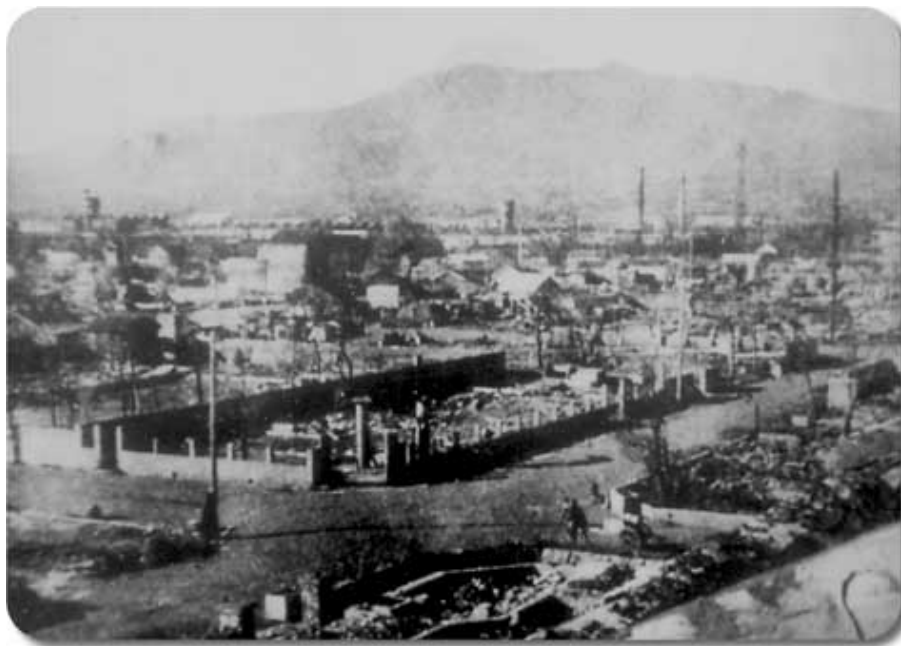
Town Attacked from the Air.

This picture shows Numazu before dawn on July 17th, 1945 (Showa 20).

Only two buildings escaped from the fires.

Right: Numazu Post Office.

Left: Numazu Chamber of Commerce



Condition of Numazu after Air Attacks (I)

This picture was taken looking north from the rooftop of the Numazu Chamber of Commerce in September 1945 (Showa 20).



Condition of Numazu after Air Attacks (II)

This picture was taken near the Otemachi intersection on
September 1945 (Showa 20).

Behind the ruins is Kanuki Mountain